



Move to **DULUTH**

RELOCATION INFORMATION

DULUTH AREA CHAMBER OF COMMERCE
RELOCATION INFORMATION

Greetings,

Thank you for showing interest in the Duluth Area. As advocates of Duluth, we have created this packet as a resource to help you take advantage of the many opportunities this great city offers. The relocation consultants included can help you make a smooth transition into the community.

The Duluth Area Chamber of Commerce has served its members for more than 150 years by providing business advocacy, collaboration leadership and member-driven initiatives. We serve as the premier advocate for commerce and industry by facilitating interaction among business, government, education, labor, and the greater community. We actively create innovative opportunities for business to advance within local and global economies.

This packet includes information of sectors relevant to Duluth living – including health care, education, finance, housing, and more. We hope you find this resource to be helpful in your transition to the Duluth area.

Table of Contents:

Why Duluth	3
Healthcare	4
Housing	9
Education	18
Finance	22
Workforce	28
Recreation	29
Amenities	30
Utilities	31
Helpful Links	32

Once you are settled, feel free to stop in and visit us at the Chamber.

Cordially,
Duluth Area Chamber of Commerce Staff

WHY DULUTH?

- 2022** Top 10 Great Cities in the United States for Outdoor Adventures (*The Washington Post*)
- 2021** Top 10 Remote-Ready Cities in the US (*Livability*)
- 2019** The Most Climate Proof City in America (*New York Times*)
- 2018** Most Underrated City in Minnesota (*Thrillist*)
10 Best Christmas Towns (*New York Post*)
- 2017** Least stressed city in America (*SmartAsset*)
Fittest City in America (*Fitbit*)
- 2016** A best college town (*College Rank*)
- 2015** Top 10 US Destinations (*Lonely Planet*)
- 2014** AMSOIL Arena named the Nation's No. 1 Hockey Facility (*Stadium Journey*)
Top 20 Fastest Growing Cities in America (*Nerd Wallet.com*)
Best Place to Live (*Outside Magazine*)
6 Best Vacation Destinations that will Improve your Work (*Forbes*)
St. Louis County recognized for Special Achievement in GIS technology (*Esri*)
Haines Road project Disaster or Emergency Construction Repair Project of the Year (*American Public Works Association*)
15th Fastest Growing Municipal Economy in America (*U.S. Census*) **St. Louis**
- 2013** St. Louis County Rated AA+ (*S&P Ratings Services*)
One of The Best Places For Business And Careers (*Forbes Magazine*)
No. 20 among The 40 Best College Towns (*Travel + Leisure*)
Haines Road rebuilding named Project of the Year (*Minnesota County Engineer's Association*)
Best Adventure Hub-Runner Up, second to Kununurra, Australia (*Outside Magazine*)
- 2012** Top 25 Cleanest U.S. Cities (*American Lung Association*)
- 2011** Top Port City (*Railway Industrial Clearance Association – RICA*)
Best Day Trip Destination (*City Pages Magazine*)
- 2010** Top 5 Small City for Livability (*Money Magazine*)
- 2009** Top 10 Places to Raise an Outdoor Kid (*Backpacker Magazine*)



HEALTHCARE

Residents of Duluth and our region have outstanding, award-winning care within their reach.

The excellent reputation of Duluth's health-care industry attracts patients from as far as Canada, International Falls, Brainerd and Upper Michigan. Patients can choose from two world-class health care systems and numerous smaller, privately owned facilities.

A healthy competition exists among Duluth's health-care providers, helping to cut costs and raise the quality of care as each facility strives to attract the highest number of patients. Competition does not diminish the health-care industry's cooperation. Each major provider offers a variety of cutting-edge technologies, many of which are unique to that hospital. In this way, patients are covered for every possible type of care they may need, from the CyberKnife center to the Cancer Care Center to same-day surgery and beyond.

Many senior care, assisted living and nursing home options are also available in Duluth. In fact, CNN ranked Duluth No. 23 in its "25 Best Places to Retire" list. State-of-the-art medical and rehabilitative facilities, comfortable living arrangements and creative social activities are among the assets provided at Duluth's eldercare centers.

In addition to providing outstanding care, the area's health-care sector provides jobs and serves as a strong economic driver, totaling approximately 28 percent of the regional economy. Furthermore, local universities, including the Duluth campus of the University of Minnesota Medical School, The College of St. Scholastica, Lake Superior College and Wisconsin Indianhead Technical College draw an abundance of medical students from around the nation and world, invigorating the Duluth economy with a fresh, new source of talent.



Health-care facilities in the Duluth area are excellent resources for both our community and our regional economy. With their exceptional reputations, competitive costs and great economic impact, health-care facilities and providers are assets to residents of the Duluth area and beyond.

Dental care for the entire family

Amazing



Our dentists offer the utmost care
to moms, dads and kids of all ages at
three convenient locations near you.

BlueStone | 218-606-1040

Downtown Duluth | 218-722-3679


Hermantown | 218-722-7770

That's my

P Park Dental

**Schedule an
appointment today.**

parkdental.com



You've come to the right place.

SKIN RENEWAL

Moving is exhausting. Take a break and pamper yourself at Essentia Health Skin Renewal. Our state-of-the-art medical spa specializes in high-quality skin rejuvenation and aesthetic treatments. It's the perfect place to relax and give your skin the care it deserves.

**OUR
SERVICES
INCLUDE:**

Botox
Chemical Peels
Broad Band Light (BBL)
Facials, including HydraFacials
Lamprobe Treatment

Laser Hair Reduction
Laser resurfacing
Microdermabrasion
Skin resurfacing
Skin care products & more



Essentia Health

Skin Renewal

Duluth Clinic 3rd Street Building (1st floor)
400 E 3rd Street | 218-786-3468

Monday-Friday:
8 am-4 pm



Duluth's great livability has been recognized by several national magazines. In 2014, Duluth won Outside Magazine's Best Outdoors Town contest. Money Magazine has ranked Duluth several times as one of the best cities to live in the country.

The city offers affordable single-family homes and condominium/town home properties, with newer upscale housing nearer to downtown. Large, older homes with panoramic views of Lake Superior line Duluth's extensive hillside while beautiful, turn-of-the-century mansions line the coast of Lake Superior. Duluth's distinctive history is also evident in the western communities of Morgan Park and Spirit Mountain, where the homes and neighborhoods were originally created for U.S. Steel plant workers.

Rental options range from apartment complexes to older renovated homes to new townhomes. Many apartments are located near Duluth Transit Authority bus lines. Others include extra perks like snow removal, controlled access and proximity to parks and other recreational areas. Many rental units and homes feature off-street parking, but for those that don't, alternate side parking is effective year-round in Duluth.

Campus Park, Boulder Ridge and Summit Ridge offer popular housing destinations for local college students. BlueStone Lofts – a housing development near the University of Minnesota Duluth geared toward college students and professionals – opened in 2013 and the adjacent, upscale BlueStone Flats opened in spring 2016. The development's newest BlueStone Vue opened in 2021 and features a variety of accommodations. All three complexes are within walking distance of The Shops at BlueStone, featuring restaurants and retail stores. Kenwood Village, a retail and housing complex on the corner of Kenwood Avenue and Arrowhead Road, and ENDI Apartments on the corner of 21st Avenue East and London Road, also opened in 2016. Both feature upscale amenities as well as convenient access to retail shopping and restaurants. District Flats at Miller Hill opened in 2018, providing 72 units in the heart of Duluth's Miller Hill Mall area and its diverse options for shopping, dining and entertainment. CityView Flats, which opened in late 2019, offers new luxury apartments in downtown Duluth near Lake Superior and Canal Park. New residential developments continue to open around the community. Enger Lofts and Lincoln Park Flats are new apartment options in the popular Lincoln Park Craft District; and a large apartment complex in Hermantown – Aery – opened in 2021.

Median pricing by Duluth zip code: <https://www.homes.com/duluth-mn/what-is-my-home-worth/>



CONDO & HOME ADVISORS

WELCOMES YOU TO THE TWIN PORTS!

Hello! If you are new to the Twin Ports, finding a nice home can be challenging. Our free personalized service will help to take the stress out of moving!



ABOUT US!

We are a unique real estate company in Duluth offering you a large selection of wonderful homes. Our strict policy of listing only properties which we can live in ourselves guarantees that your new home will be nice, clean and well maintained.

WHAT WE OFFER



**FURNISHED OR
UNFURNISHED**

We offer a variety of options to suit your furniture needs. Please call us to discuss our availability!



**SHORT TERM OR
LONG TERM LEASES**

We know that everyone has a different timeline and are happy to work with you to offer a lease that fits yours.



(218) 720-3987



CondoAndHomeAdvisors@gmail.com



CondoAndHomeAdvisors.com

DULUTH

REAL ESTATE EXPERTS



in   
C21ATWOOD.COM

218.722.8221

CENTURY 21. Atwood

BY CHERYL FOSDICK

DEEP DIVING



Just recently, in 2020, “deep dive” became an officially recognized idiom by *Merriam-Webster’s Collegiate Dictionary*. Here is action — a verb metaphorically connected to the highest cliffs and the deepest ocean trenches. Heroic images of the sweating and fearful in iron submersibles and those with toes to the cliffs aside, the aim of deep diving is to attain a netherworld, to get to the bottom of things — not as an endpoint, mind you. Deep diving goes to the foundations, to rummage for a clear voice or a sign in a world of commotion.

In gesture, deep diving is to gracefully disappear for periods of time, in our own embrace.

As much as the corporate world might consider this a group exercise in marketing, I would argue that the real power of deep diving is private. To deep dive is a personal search for meaning — immersion to the limit of individual delight and enlightenment. All humans test these waters, driven by curiosity and a longing for common ground.

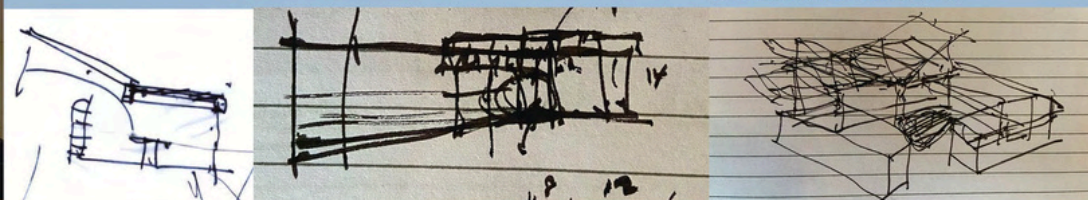
As place-makers, architects and designers deep dive every day. We carry around vaults of experience, observation and practice. To find meaning in our professional and personal lives, we cast about for those in whom we find threads of our same cloth. We pursue our clients. Equally, they seek us. We bring ourselves to the table — this variable surface much like water — with the goal of giving people a built version of themselves through our eyes. In the best of times, we and our clients will individually deep dive many sketches, images, artifacts, materials — innumerable possibilities — over and over again. With each new understanding, we look to resurface closer and closer to each other.

With these thoughts, it is important to clarify an understanding about deep diving, clients, and our practice. Even as many around the world cannot safely do so, all people should practice from their own individual and ever-cultivating points of view. In deep dives as designers, we are looking for our patron’s world within our own lives and experiences. We will find common ground between us, because, to have consequential lives, we must. As designers of place, we need our clients to be thoughtful and engaged. For me, long gone are the days of *Designers with Autographs*, and far more rich and fulfilling are these days of creating cairns out of the stories of our clients’ lives — each stone to be turned also considered personally, each stop to be pulled also releasing our own memories, each net widely cast over deep dives undertaken by our clients and ourselves in the messy, enchanting, daring, gratifying process of Design.

Diving deeply always, from our Duluth and Bayfield offices on the coast of Gitchi-Gami. Drop in and compose a project together with us.

cfdesignltd.com

218.343.0983



CF
design

blue|stone

FLATS | LOFTS

VUE

at blue|stone

[Click here to see Flats Floor Plans!](#)

[Click here to see Vue Floor Plans!](#)

[Click here to see Lofts Floor Plans!](#)

- Next Level Living
- Studio - 4 Bedroom Apartments
- Pet Friendly*
- Located in central Duluth, walk to restaurants & retail
- Beautiful Amenities including:
Indoor Pool & Hot Tub, Fitness Center, & Free WiFi



**Welcome
to your
new home!**

[Click here to see Floor Plans!](#)


Boulder Ridge
LUXURY APARTMENT HOMES

- Luxury Living
- 3 Bedroom Town Homes
- Studio - 3 Bedroom Apartments
- Indoor Pool & Hot Tub, Fitness Center
- Most Utilities Included

**For more information
about leasing call:
(218) 206-6870**



Home to a wide array of learning institutions from early childhood to post-secondary schools, Duluth boasts an excellent and diverse educational system that provides lifelong learning opportunities for residents of all ages.

Duluth offers an abundance of early childhood education options to meet the needs of children and families. Parents are able to make educated choices regarding where to enroll their children during these formative years of rapid growth and development. The community offers private and public early childhood programs, full- and part-time programs, nursery school, family child care, and licensed and nationally accredited child-care centers with infant through school-age programs.

The fall of 2013 concluded the Duluth Public Schools Long Range Facilities Plan that began in 2006 with the goal to improve educational opportunities for all Duluth Public Schools students. The plan was designed to create a more efficient school system focused on providing an education rivaling the best Minnesota has to offer while serving to attract tomorrow's families with the best possible schools. Benefits include critical investments for safety and education quality; smarter use of school resources; greener, more energy-efficient schools; and value for taxpayers. The final school renovations were completed in the fall of 2013. In total, 13 schools throughout the city have been completely transformed into modern, sustainable, quality learning facilities.

Additionally, three major universities, a number of community colleges and several specialized business schools are located in the Duluth area. University students comprise approximately 18 percent of Duluth's population. These students – who hail from the Duluth area and across Minnesota, the nation and the world – are a major economic driver for the area and provide regional employers immediate access to an educated workforce.





ENGAGE
ACHIEVE
SUCCEED

Every Student, Every Day

**ISD 709 Duluth
6 Public Schools**

HOW TO ENROLL
www.isd709.org/for-new-families/how-to-enroll

CONTACT US
www.isd709.org/district/contact-us
www.ISD709.org

FOLLOW US



WHERE TOMORROW IS BUILT TODAY

Duluth Edison Charter Schools are PreK through 8th grade free, public charter schools.

We focus on a strong core of targeted instruction in reading, math, social studies, and science. Additionally, we offer outdoor education, a robust specialist program including art, music, community service learning, and second language options. We emphasize play-based, project-based learning, small class sizes, and a schoolwide focus on core values, community building, and restorative practices.



**ENROLL
TODAY**

218-728-9556 ext 5006

www.duluthedison.org

North Star Academy
3301 Technology Drive
Duluth, MN 55811

Raleigh Academy
5905 Raleigh Street
Duluth, MN 55807

**Duluth Edison
Charter Schools**
Your PreK-8 Schools of Choice

Become a Hilltopper!

CONTINUING *a*
TRADITION *of* EXCELLENCE

M

MARSHALL SCHOOL
K-12 • College Preparatory
Accredited • Independent

For more than a century, Marshall has maintained a foundation of providing the highest quality educational experience and consistently upholding values of integrity, respect, strong academic habits, compassion, and curiosity.

Students benefit from unique programs and characteristics, including:

- Pathway programs for focused coursework in STEM fields
- Personalized college counseling and preparation
- Small class sizes and individualized attention from educators
- A safe, secure, welcoming community and campus
- Outstanding graduation rates and substantial earned college scholarship amounts
- International boarding students from around the world



AVERAGE CLASS SIZE



TEACHER : STUDENT
RATIO

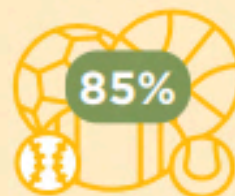


**\$15
MILLION**

EARNED IN COLLEGE
SCHOLARSHIPS
BY CLASS OF 2024
(75 STUDENTS)



40+
ACRE CAMPUS



SPORTS
PARTICIPATION

Marshall School

1215 Rice Lake Road | Duluth, MN 55811
www.marshallschool.org (218) 727-7266

Explore More →





Start right. Start here.



STELLA MARIS ACADEMY

Catholic early childhood
through high school programs
serving Duluth and the
surrounding communities



JR/SR HIGH, WOODLAND
7TH GRADE - HIGH
SCHOOL



ST. JAMES, WEST DULUTH
PK - 6TH GRADE



HOLY ROSARY, EAST DULUTH
PK - 3RD GRADE



ST. JOHN'S, WOODLAND
4TH - 6TH GRADE

HIGHLIGHTS

- Accredited academic excellence
- Experienced and dedicated teachers
- Emphasis on virtuous formation
- Robust extra-curricular opportunities
- Safe and secure campuses
- Strong sense of community
- Transportation options
- Tuition assistance program

*A faith-based environment with the mission to
prepare students to lead, love, and serve like
Jesus taught to go out and transform the world.*

www.stellamaris.academy



218-623-6253



SMA.ADMISSIONS@STELLAMARIS.ACADEMY



Well-known national banks, local banks, credit unions and mortgage banks are located conveniently throughout Duluth, easily allowing residents and local businesses to access their banking needs close to home. Duluth's financial institutions pride themselves on excellent customer service, along with providing customers with business-friendly banking hours and many online banking options. A comprehensive menu of services is offered – from traditional bank products, commercial loans, home financing, checking accounts, competitive rates on savings and loans and 24-hour telephone and auto banking to many conveniently located ATMs.

In addition, specialized options include business-to-business banking, insurance brokerage, investment and payment services products and more.

Financial health extends far beyond a great banking service. Duluth is bursting with young professionals, growing families, aging families, and retirees with specialized financial needs. A multitude of financial planning organizations, lenders, and wealth management companies offer individualized services to accommodate every stage of your financial journey.



**NORTH SHORE
BANK**



WELCOME TO DULUTH!

You're making intentional choices to build your future, and it all begins with a solid financial strategy. **North Shore Bank is here to help you.**

WE DO IT ALL!

**PERSONAL BANKING • BUSINESS BANKING • MORTGAGE SERVICES
INSURANCE SERVICES • PRIVATE BANKING
TRUST & INVESTMENT SERVICES • RETIREMENT SOLUTIONS**

Locally-owned and managed, independent community bank proudly serving the Duluth area **for over 105 years.**



Non-deposit products are not insured by the FDIC, are not deposits, and may lose value.



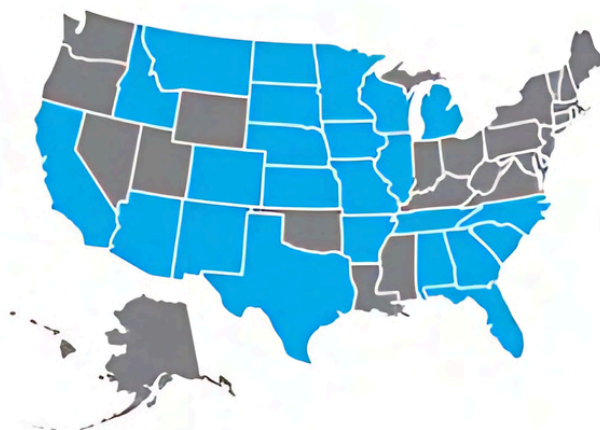
NORTHSHORE.BANK



For decades, we've simplified the homebuying process for thousands of families. In fact, our Bell name has mortgage roots dating back to 1880 in Minnesota. That's experience you can trust from your preapproval throughout the life of your loan. With core values of family, unequaled service and giving back at the heart of all we do, we treat our customers how we want to be treated, offering highly competitive rates, a wide variety of loan programs and a reputation for award-winning service, reliability and on-time closings.

- Conventional loans
- First-time homebuyer programs
- Exclusive Bell Moving Forward program - 1% down
- Lake and vacation home loans
- New construction loans
(including a convenient one-time-close option)
- Down-payment assistance programs
(Home in Five, etc.)
- Refinancing options
- HELOCs
- Portfolio loans
- Veterans Affairs (VA) loans
- Federal Housing Administration (FHA) loans
- Bell rehab loans
(including pool options for new and resale properties)
- Rural development loans
- Specialized doctor and dentist loan programs
- And more!

- Alabama
- Arizona
- Arkansas
- California
- Colorado
- Florida
- Georgia
- Idaho
- Illinois
- Iowa
- Kansas
- Michigan
- Minnesota
- Missouri
- Montana
- Nebraska
- New Mexico
- North Carolina
- North Dakota
- South Carolina
- South Dakota
- Tennessee
- Texas
- Wisconsin



Not all of these products are available in all markets.



Mark Anunti
Mortgage Loan Officer NMLS #582756
manunti@bell.bank | markanunti.com
218.310.3493 MOBILE
218.673.5970 OFFICE

Our goal is to help you pursue yours. It's that simple.

At Merrill, we'll help you get ready for the future with a financial approach that's designed for you.



Merrill Lynch Wealth Management

130 West Superior Street

Suite 800

Duluth, MN 55802

218.726.3191

fa.ml.com/siehhendersongroup

Sieh Henderson Group

Timothy C. Sieh, CFP®, CLU®, ChFC®

Wealth Management Advisor

timothy_sieh@ml.com

Michael D. Henderson, CFP®

Wealth Management Advisor

mhenderson8@ml.com

Danielle Wildes

Registered Wealth Management Client Associate

danielle.wildes@ml.com

Matt Blake, CFP®

Registered Wealth Management Client Associate

matt.blake@ml.com



Merrill Lynch, Pierce, Fenner & Smith Incorporated (also referred to as "MLPF&S" or "Merrill") makes available certain investment products sponsored, managed, distributed or provided by companies that are affiliates of Bank of America Corporation ("BoFA Corp."). MLPF&S is a registered broker-dealer, registered investment adviser, Member SIPC and a wholly owned subsidiary of BoFA Corp.

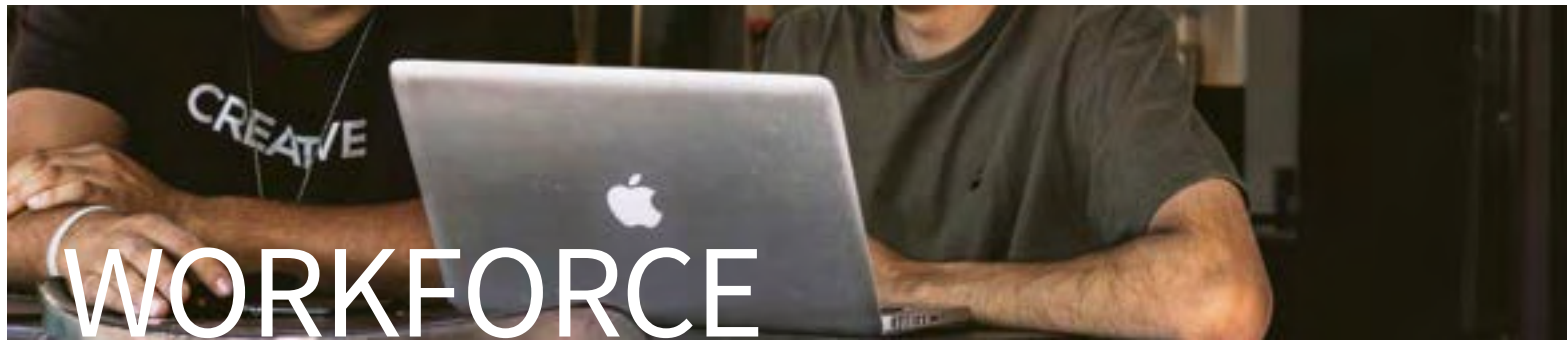
Investment products: **Are Not FDIC Insured** | **Are Not Bank Guaranteed** | **May Lose Value**

The Bull Symbol and Merrill are registered trademarks of Bank of America Corporation.

CFP Board owns the marks CFP®, CERTIFIED FINANCIAL PLANNER™, and CFP® (with plaque design) in the U.S. The CLU® is the property of The American College of Financial Services, which reserves sole rights to its use, and is used by permission. The ChFC® is the property of The American College of Financial Services, which reserves sole rights to its use, and is used by permission.

© 2022 Bank of America Corporation. All rights reserved.

MAP4264784 | AD-07-22-0117 | 470948PM-0322 | 07/2022



Duluth residents choose to live here because our dedicated workforce demonstrates a strong work ethic resulting in higher productivity, minimal turnover and a thriving economy. Ranked among the lowest unemployment rates in the nation, jobs in Duluth offer fantastic opportunities for growth.

Duluth-Superior MN-WI MSA Employment by Industry

Q2 2021

Source: Minnesota DEED

Total Private, All Industries	107,086
Goods-Producing	
Construction	9,548
Manufacturing	8,291
Service-Providing	
Trade, Transportation & Utilities	23,829
Information	1,026
Activities Professional & Business	5,215
Services	7,511
Education & Health Services	31,905
Leisure and Hospitality Other	14,168
Services, excluding gov. Public	5,593
Administration	15,928

Duluth-Superior MN-WI MSA Wage Estimates

Q1 2021

Source: Minnesota DEED

Median Wages	
Total, All Occupations	\$20.81/hr
Management	\$42.06/hr
Business and Financial Operations	\$30.22/hr
Computer and Mathematical Occupations	\$34.62/hr
Architecture and Engineering	\$36.09/hr
Life, Physical and Social Science	\$31.89/hr
Community and Social Services	\$21.74/hr
Legal	\$32.65/hr
Education, Training and Library	\$23.94/hr
Arts, Design, Entertainment, Sports and Media	\$18.68/hr
Health Care Practitioners and Technical	\$32.57/hr
Health Care Support	\$15.12/hr
Protective Service Food Preparation and Serving	\$26.26/hr
Related Building and Grounds	\$12.55/hr
Cleaning/Maintenance	\$14.47/hr
Personal Care and Service	\$14.47/hr
Sales and Related	\$14.59/hr
Office and Administrative Support	\$19.20/hr
Farming, Fishing and Forestry	\$20.40/hr
Construction and Extraction Installation,	\$29.36/hr
Maintenance and Repair	\$26.22/hr
Production	\$21.35/hr
Transportation and Material Moving	\$19.84/hr



Welcome!

New to town and not sure where to start?

We are your free, public resource to connect with employment, find training, and explore careers.

① Start Here! Explore Job Opportunities!

Visit MinnesotaWorks.net

Create an account to search and apply for jobs within the region.

③ Schedule a one-on-one Appointment

Meet with a Career Counselor

Get tailored guidance for your job search. To schedule, call or visit:
www.careerforcemn.com/Duluth


② Need Help with Your Job Search?


Staffed computer lab

Drop in Monday - Friday

10:00am - 4:00pm for assistance.

CONTACT US TODAY!

 (218) 302-8400

 402 W 1st Street,
Duluth, MN, 55802

FOLLOW US TO STAY UP TO DATE

 @Duluthworkforce

 <https://www.facebook.com/duluthworkforcedevelopment>



CareerForce™



The City of Duluth owns and preserves more than 11,000 acres of park space, giving Duluth one of the more comprehensive park systems in the United States. Citizens and tourists alike can find a vast array of year-round activities within a short walk or driving distance, such as rock-climbing, walking, skiing, biking, hiking, golfing, fishing, snowshoeing and roller blading, all within city limits.

Additionally, there are numerous facilities throughout the city available for softball, tennis, soccer, baseball, basketball, horseshoes, hockey and bocce. Duluth is a gateway to Lake Superior's scenic North Shore, which attracts thousands of visitors to the Boundary Waters Canoe Area Wilderness, Gooseberry State Park, Jay Cooke State Park and Tettegouche State Park – all offering even more opportunities to enjoy the region's spectacular scenery and outdoor activities.

The International Mountain Bike Association recently designated Duluth's trails as one of six gold-level ride centers in the world. Mountain bikers can enjoy riding at Hartley Park, Lester Park, Mission Creek, Piedmont/Brewer and Spirit Mountain, which are connected by the Duluth Traverse trail system. Road bikers can enjoy the Lakewalk or the Munger Trail with great views of the lake. For details, visit the City of Duluth's website (www.duluthmn.gov/parks/trails-bikeways) or Cyclists of Gitchee Gumees website (www.coggs.com).

Plenty of green space allows wildlife to visit the city. In addition to deer, bear and fox that may be seen within city limits, Duluth is widely considered one of the Top 10 destinations in America for bird watching. Hawk Ridge Bird Observatory is a great place to witness the migration, which acts as a "funnel" for tens of thousands of migratory hawks, eagles and other birds of prey. Peak migration occurs from mid-September through late October.

For those not into animal watching, enjoy a stroll through one of Duluth's lovely gardens and connecting trails. Duluth parks offer well maintained perennial gardens including the popular Rose Garden in Leif Erikson Park, where 40,000 roses bloom each year, and Enger Park, which hosts a Japanese-inspired peace garden and spectacular views of the city from the top floor of Enger Tower or the expansive pavilion. And with two dozen creeks and streams with secluded waterfalls located within city limits, Duluth is a destination for those seeking fast-paced adventure or a leisurely stroll. Major parks include Bayfront, Brighton Beach (Kitchi Gammi Park), Chester Park, Chambers Grove, Leif Erikson, Park Point, Lincoln Park, Lester, Fairmont and a newly created Quarry Park offering disc golf, accessible trails and ice climbing. For a complete list of parks, visit the City of Duluth website at www.duluthmn.gov/parks.



**TOWNEPLACE
SUITES®**
BY MARRIOTT

Your home away from home

While you're searching for your dream home, make your stay comfortable and convenient. The TownePlace Suites by Marriott® Duluth gives you space to settle in and stay on your routine. From spacious suites with full kitchens and complimentary hot breakfast to Weber® grills on our patio and Elfa® closets from The Container Store,® we have what you need to stay comfortable and organized, just the way you like it.

When it's time to explore the neighborhood, check out the TowneMap® for our recommendations of top local finds. Located just minutes from major attractions such as Canal Park and Downtown Duluth, this pet-friendly hotel offers exceptional service to make your stay comfortable while you find your perfect home in this charming city. Book your stay today and start exploring all that Duluth has to offer.

BOOK YOUR EXTENDED STAY TODAY

CALL 218.514.2400 OR VISIT [MARRIOTT.COM/DLHTS](https://www.marriott.com/dlhts)

TownePlace Suites® Duluth
1520 Sundby Road • Duluth, MN 55811
218.514.2400

MEMBER OF
MARRIOTT BONVOY™

Limited number of rooms are available for this promotion. Tax is additional. Offer cannot be combined with any other promotions. Blackout dates may apply. Advance reservations required. Other restrictions apply. Rates are per room, per night and based on availability at the time of reservations.





AMENITIES

Duluth Parks & Recreation provides year-round recreation, social and cultural opportunities on a city-wide basis for persons of all ages. The city owns and maintains the following special areas:

- 129 municipal parks, playgrounds and public places
- Neighborhood community recreational centers
- 90 miles of single track mountain biking trails on the newly built Duluth Traverse for novices and experts with another 10 miles to be added
- Senior recreation centers
- Over 7 miles of Duluth Lakewalk along the shores of Lake Superior now connected to Brighton Beach by way of an underground tunnel
- A new 3-mile Cross City Trail that travels from Duluth Sister Cities Park to Carlton Street in the Lincoln Park neighborhood with future additions that will connect to the Willard Munger State Trail
- 2 golf courses, each offering a challenging course and breathtaking views
- Disc golf courses
- Skatepark at Wheeler Field Athletic Complex
- Year-round indoor ice skating at Essentia Duluth Heritage Sports Center
- 4 dog parks
- 13 self-guided hiking trails
- 55 kilometers of groomed cross-country ski trails
- 45 miles of snowmobile trails
- Lake Superior Zoo
- Wade Municipal Stadium
- Swimming at Park Point Beach
- An abundance of public gardens
- Seasonal campground situated next to the St. Louis River
- Hartley Nature Center
- Hawk Ridge Bird Observatory



Duluth's water is drawn naturally from Lake Superior, the world's largest and purest expanse of fresh water. The abundance of this renewable resource, combined with Duluth's innovative treatment facilities, keeps our municipal water rates among the lowest in the region.

Electric service in Duluth is provided by Minnesota Power, an investor-owned utility that offers residential electric rates consistently among the lowest in the upper Midwest. The region's robust utility infrastructure also includes water, natural gas and sewage service provided by ComfortSystems through the City of Duluth's Public Works & Utilities Department.

Area residents and businesses take advantage of a wide variety of programs and services offered by the Western Lake Superior Sanitary District. They include recycling, materials recovery, hazardous waste disposal, and a yard waste and organics composting site. In addition, several garbage haulers and recyclers offer competitive rates.

SEE YOU SOON

On behalf of the Duluth Area Chamber of Commerce, thank you for choosing our region. We trust you will enjoy to live, work, and play here.

Please utilize our full Business Directory to find any additional connections needed as you settle in.

To find out more about the Duluth area, please utilize these additional resources:

duluthchamber.com
duluthmn.gov
st.louiscountymn.gov
visitduluth.com

See you soon.