



Moving Business Forward since 1870

DULUTH AREA CHAMBER OF COMMERCE
**2024 BUSINESS DIRECTORY
& COMMUNITY GUIDE**



Thank you for supporting
local business.



DULUTH AREA CHAMBER OF COMMERCE
2024 ACTION PLAN

MISSION

Serve our members by providing business advocacy, collaborative leadership and member-driven initiatives.

VISION

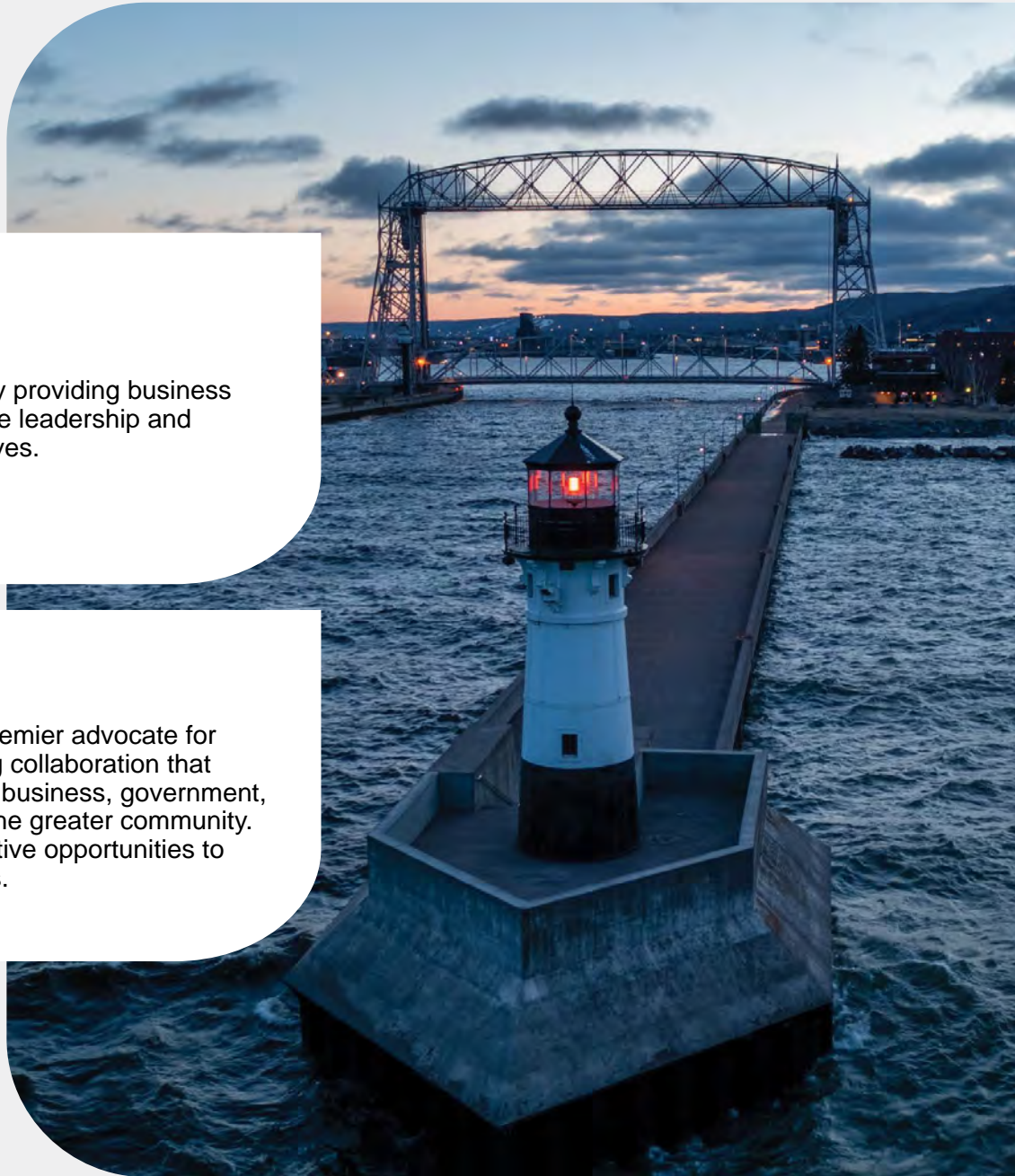
Serve as our area's premier advocate for business by facilitating collaboration that engages leaders from business, government, education, labor and the greater community. Actively create innovative opportunities to advance our members.

MOVING BUSINESS FORWARD SINCE 1870



5 West First Street, Suite 101
Duluth, Minnesota 55802
(218) 722-5501

inquiry@duluthchamber.com | duluthchamber.com



2023: YEAR IN REVIEW

2023 was a busy year for the Chamber. We completed our new strategic plan, allowing us to have a framework to address the current and emerging challenges facing businesses, our economy and our community. Additionally, we updated our corporate governance, including ratifying new bylaws. We amplified our efforts on diversity, equity and inclusion. Our new 501(c)(3), the Duluth Area Chamber Foundation, has already begun having an impact, conducting a study and releasing research to help inform our community and our elected officials. We increased our level policy and advocacy work, resulting in significant influence and investments into Duluth and northeastern Minnesota. Further, we participated in several city and county task forces, committees and working groups in support of tax base growth and development.

Through the vision of our board of directors, the support of our members and the hard work of our staff, we have been able to accomplish many of the goals identified in the 2023 Action Plan.

41 Campus Ambassadors
6,011 event attendees
101 new members in 2023
55 Leadership Duluth graduates in 2023
68 ribbon cuttings

CHAMBER STAFF



Matt Baumgartner
President



Jebek Edmunds
Director of Education



Daniel Fanning
Vice President of Strategy & Policy,
Executive Director of the Chamber Foundation



Aubrey Hagen
Director of Membership Development & DEI,
Fuse Program Director



Leah Kohlts
Director of External Relations & Community Resources



Kathleen Privette
Director of Events & Board Operations



Lori Steinbach
Director of Office Administration

2024: PUTTING OUR STRATEGIC PLAN INTO ACTION

As we look to the work ahead of us in 2024, our board of directors is excited about the opportunities and cautiously optimistic about the future outlook for our region. We are ready to do all we can to help ensure that Duluth is not only the best place for doing business, but also the best community to live in and raise a family in. We love this special place we all call home and stand ready to partner with the many incredible people and organizations working on the challenging issues of our time, including those like housing, child care and economic development in our region.

Additionally, we are excited to work on behalf of our membership to improve business conditions, further economic development and support community progress. In those important spaces, we intend to champion initiatives like permitting reform, incentivizing the development community and efforts to improve sports tourism in the region. We know that collaboration is key, that it is time to embrace change and that we must believe in Duluth and our business community. Here is to 2024!

HISTORIC NUMBERS IN 2023

- Largest turnout in the 26-year history of Duluth & St. Louis County at the Capitol Days
- Record number of Leadership Duluth applications
- Highest attendance at the annual dinner in over five years
- Capacity crowds at the 2023 Candidate Forums, Let's Do Lunch and Women in Leadership Conference

BUSINESS CONDITIONS

Research, monitor and improve economic drivers that impact business operations.

ECONOMIC DEVELOPMENT

Create pathways and seek solutions to attract and retain business and development.

COMMUNITY PROGRESS

Drive efforts that advance regional livability, labor environment and population vitality.

LEAD

Resources & Information

Networking Opportunities

Recruit New Development



Advocacy on Behalf of Members

Policy & Candidate Forums

Rightsize Tax Environment

Construction Permitting Process

Promote Policy Changes

Local & State Permit Process Improvement

Military Advocacy

Productive Government Relations

COLLABORATE

Small Business Support

Broadband

Workforce Development

Child Care



Respond to Member Needs



Educational Offerings

Tax Base Expansion

Regional Marketing & Attraction

Diversity Equity & Inclusion

Research

SUPPORT

Infrastructure Improvement



Housing

Industry

Increase Labor Force Participation

Population Growth

Partner with Local Unions

Tourism & Hospitality



Remove Barriers for Business

Women in Leadership



BOARD OF DIRECTORS



JEFF ANDERSON
Costin Group, Inc.,
JayBee Travel, &
Boat Club Restaurant & Bar



AJ AXTELL
Western Lake Superior
Sanitary District



MATT BAUMGARTNER
Duluth Area Chamber of
Commerce



DANIEL BERG
National Bank of
Commerce



JON BIRKELAND
Bell Bank



SUE BOSELL
University of Minnesota
Duluth



JENNIFER CADY
Minnesota Power -
An ALLETE Company



SCOTT CHRISTENSEN
Midwest
Communications



SARA COLE
Duluth Area Family
YMCA



DAN COLLISON
Sherman Associates



PAT DeGROOD
The Jamar Company



DR. CHIAMAKA ENEMUOH
Lifestone Health
Care, Inc.



CHRISTIE ERICKSON
Vitta Pizza



BEN FAGERLIE
Arrowhead Surgery
Center



MORGAN FRITZINGER
Minnesota Tribal
Contractors Council



STEVE GLONCHAK
Members Cooperative
Credit Union



KENZIE HOHMAN
Essentia Health



JEFF HOLMES
maurices



TIFFANY HUGHES
A&L Properties



BRIANA JOHNSON
American Heart
Association



RACHEL JOHNSON
APEX - Area Partnership
for Economic Expansion



AARON KELLY
LHB, Inc.



JILL KEPERS
Duluth Housing and
Redevelopment
Authority



LINDSAY KERN
Kern & Kompany
Marketing and
Special Events



JOHN MAGAS
Duluth Public Schools -
ISD 709



RENEE MATTSON BURNS
Trinity Creek
Consulting



DR. BARBARA McDONALD
The College of
St. Scholastica



DYLAN MERRIMAN
Dylan Merriman Agency
LLC, American Family
Insurance



BEN NORTON
Encompass Real
Estate Investment
Services



KATE VAN DAELE
Cenovus Energy -
Superior Refinery



BRIANNA VANDER HEYDEN
St. Luke's



ANDY WHEELER
Wheeler Associates

EXECUTIVE COMMITTEE

JENNIFER CADY
Board Chair

DR. CHIAMAKA ENEMUOH
Chair-Elect

JON BIRKELAND
Treasurer

SARA COLE
Vice Chair

RENEE MATTSON BURNS
Vice Chair

AARON KELLY
Past Chair

MATT BAUMGARTNER
President



**DULUTH
AREA CHAMBER OF
COMMERCE**

Moving business forward. ▶

Welcome to Our Beloved Community

Duluth is a vibrant community filled with remarkable people and places. We enjoy an extraordinary city that supports, cares for and creates opportunities for all of our citizens.

If you have arrived on our shores, we are happy to have you join us. If you are considering making the Duluth area your home or place of business, wait no longer. We are ready to help you settle in for a lifetime.

This is one of the most beautiful places you are ever going to experience.

We are ready to show it off, and that is why our Chamber is making this Community Guide available to you. We believe the more you know about our Shining City on the Hill, the more you will be drawn to it. You will enjoy this big city with a small-town personality – a rugged outpost with a cosmopolitan flair.

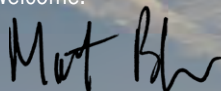
With a fascinating history and heritage as a hard-working industrial town, we have balanced and diversified our industrial roots with tourism, health care, technology and education. Additionally, our growing reputation in the aviation industry illustrates that the sky is the limit for Duluth.

The Duluth Area Chamber of Commerce is the heart of our business community. We have served as the voice of business since 1870. We serve our 1,000 members by providing them the support they need to move forward. We know business.

Connect with us. We will clear the path for you within our beloved Zenith City on the shores of the Greatest of the Great Lakes.

Thank you for your interest in this exceptional community, nestled into the emerald hillside along the shores of Gitche Gumeé.

Welcome.



Matt Baumgartner
President
Duluth Area Chamber of Commerce

CONTENTS

Welcome	1
Duluth at a Glance.....	2
Housing.....	4
Economy	7
Building Our City.....	9
Education.....	13
Financial	17
Government.....	23
Health Care.....	25
Military	30
Tourism & Arts.....	31
Conference Centers	34
Lodging	36
Transportation	39
Utilities	41
Public Service Numbers	44
Businesses	45
Classifieds	77
Classifieds Index	111

PUBLISHER

Matt Baumgartner, President
Duluth Area Chamber of Commerce
5 W. First St., Ste. 101
Duluth, MN 55802
218-722-5501
Fax: 218-722-3223
Email: inquiry@duluthchamber.com
www.duluthchamber.com

ADVERTISING AND PRODUCTION

AdMax Displays Inc.
1518 E. Superior St.
Duluth, MN 55812
218-724-2734
www.admaxdisplays.com

This publication is a supplement to the Duluthian magazine, a bimonthly publication published by the Duluth Area Chamber of Commerce, a nonprofit organization.



DULUTH
AREA CHAMBER OF
COMMERCE

Moving business forward. ►

DULUTH AT A GLANCE

CLIMATE

The proximity of Lake Superior, the largest of the Great Lakes, modifies local weather, causing cooler summer temperatures, warmer winter temperatures and a low frequency of severe storms.

Average Temperatures

	January	July
Daily Average	8.4°F	65.5°F
Maximum	17.9°F	76.3°F
Minimum	-1.2°F	54.6°F

Average Annual Rainfall

30.96"

Average Annual Snowfall

85"

LOCATION

Duluth is halfway between Minneapolis-St. Paul and the U.S.-Canadian border. The altitude ranges from 605 to 1,485 feet above sea level. Duluth is the third largest metro area in Minnesota. The Duluth-Superior Metropolitan Statistical Area* consists of two counties: St. Louis County, Minn., and Douglas County, Wis.

POPULATION

City of Duluth	86,619
Hermantown	10,126
Proctor	3,095
Two Harbors	3,621
Superior, Wis.	26,459
St. Louis County	199,182
Duluth-Superior MSA*	291,323*
State of Minnesota	5,737,915

Source: U.S. Census American Community Survey (ACS), 5-Year Estimates.

*Includes St. Louis and Carlton Counties in Minnesota and Douglas County in Wisconsin.

POPULATION CHARACTERISTICS City of Duluth Population (2020 Census):

Race	Percent
White	89.7%
American Indian	1.8%
Black or African American	2.3%
Asian & Other Pac. Isl.	1.6%
Hispanic or Latino	2.3%
Two or More Races	4.1%
Age Distribution	
18 years and older	82.2%



LABOR FORCE INFORMATION

Minnesota Department of Employment and Economic Development (DEED) Local Area Unemployment Statistics (LAUS) count the labor force within the city, rather than all of the people who work within the city.

Duluth

2023 Annual Average

Source: Minnesota DEED Local Area Unemployment Statistics

Labor Force	44,890
Employment	43,872
Unemployment	2.3%

Duluth-Superior MSA (LAUS)

2022 Annual Average

Labor Force	140,004
Employment	135,596
Unemployment	3.1%

Duluth-Superior MSA Employment

Source: Minnesota DEED Current Employment Statistics

4th Quarter 2023

Total Private, All Industries	109,082
Goods-Producing	
Construction	9,533
Manufacturing	8,282
Service-Providing	
Trade, Transportation & Utilities	25,807
Information	937
Financial Activities	4,870
Professional and Business Services	7,433
Education & Health Services	31,822
Leisure and Hospitality	13,241
Other Services, excluding gov.	6,097
Local Public Administration	24,781

Total Non-Farm Jobs

Source: Minnesota DEED Current Employment Statistics

Duluth-Superior MN-WI MSA	132,863
---------------------------	---------

Duluth-Superior MN-WI MSA Wage Estimates

Occupational Employment Statistics

Source: U.S. Bureau of Labor Statistics

Median Wages

Total, All Occupations	\$26.45/hr
Management	\$49.05/hr
Business and Financial Operations	\$35.38/hr
Computer and Mathematical Occupations	\$40.04/hr
Architecture and Engineering	\$38.42/hr
Life, Physical and Social Science	\$33.70/hr
Community and Social Services	\$25.32/hr
Legal	\$45.33/hr
Education, Training and Library	\$25.36/hr
Arts, Design, Entertainment, Sports and Media	\$25.81/hr
Health Care Practitioners and Technical	\$44.29/hr
Health Care Support	\$16.99/hr
Protective Service	\$25.96/hr
Food Preparation and Serving Related	\$14.32/hr
Building and Grounds Cleaning and Maintenance	\$16.96/hr
Personal Care and Service	\$17.04/hr
Sales and Related	\$19.46/hr
Office and Administrative Support	\$21.59/hr
Farming, Fishing and Forestry	\$18.21/hr
Construction and Extraction	\$30.84/hr
Installation, Maintenance and Repair	\$27.82/hr
Production	\$23.42/hr
Transportation and Material Moving	\$21.53/hr

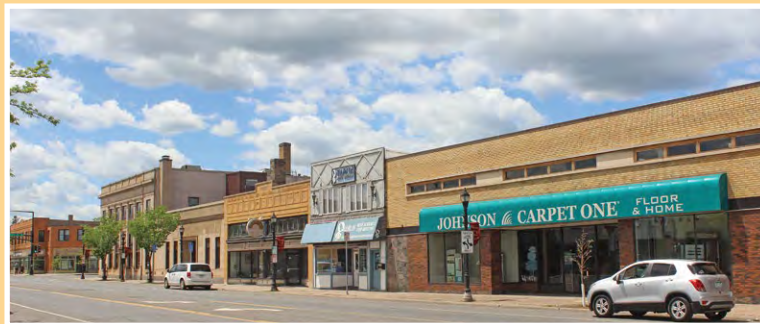
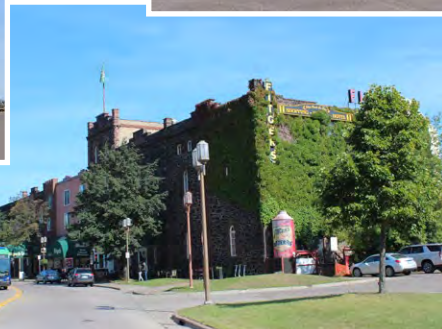
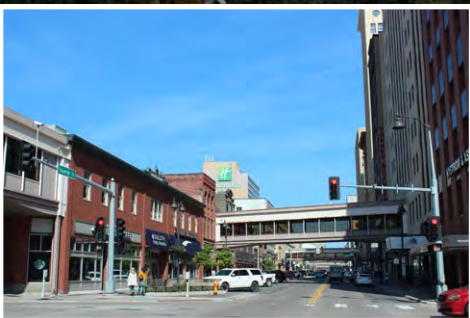
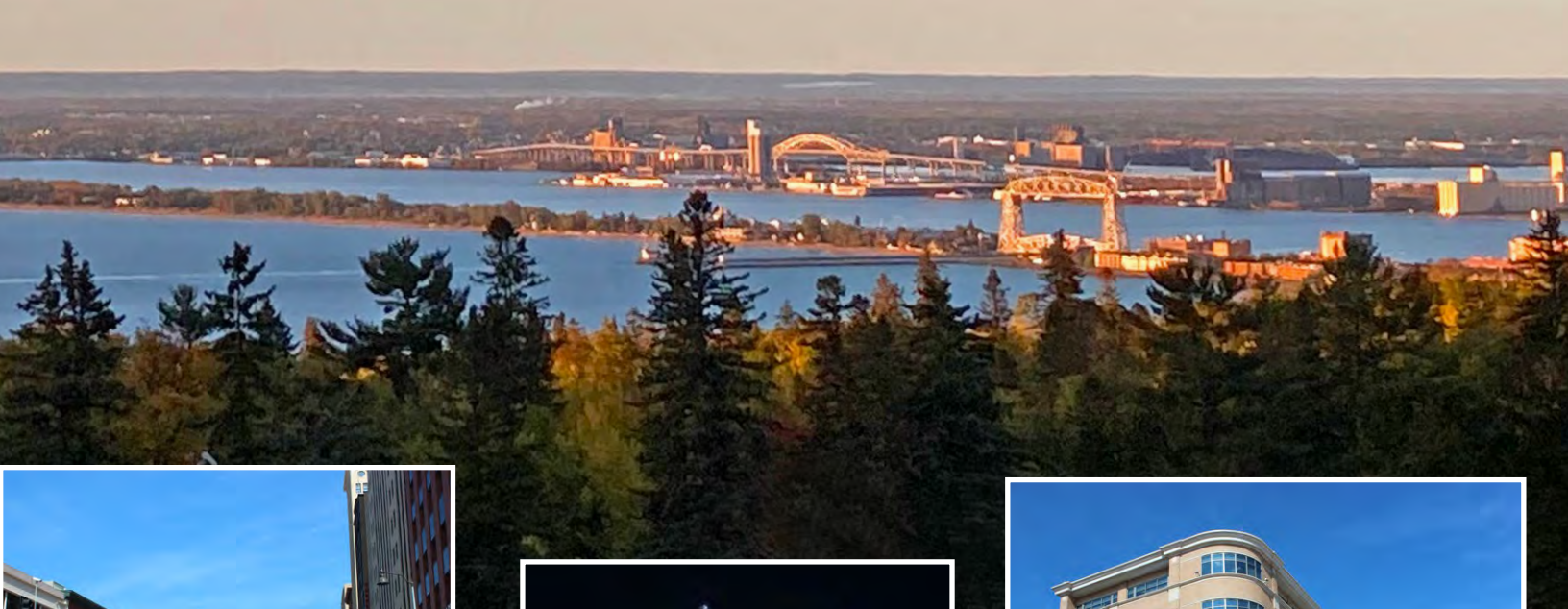
Taxes

City of Duluth General Sales & Use Tax	1.5%
St. Louis County Transit Sales/Use Tax	0.5%
State of Minnesota General Sales & Use Tax	6.875%

Demographic information websites:

www.northlandconnection.com
www.demography.state.mn.us
www.census.gov
www.mn.gov/deed/data

Minnesota Department of Employment and Economic Development
CareerForce Duluth, 402 W. First St., Duluth, MN 55802
Direct: 218-302-8413 • www.careerforcemn.com/duluth





HOUSING

HOME-BUYING, RENTING, BUILDING, REALTORS AND PROPERTY MANAGEMENT

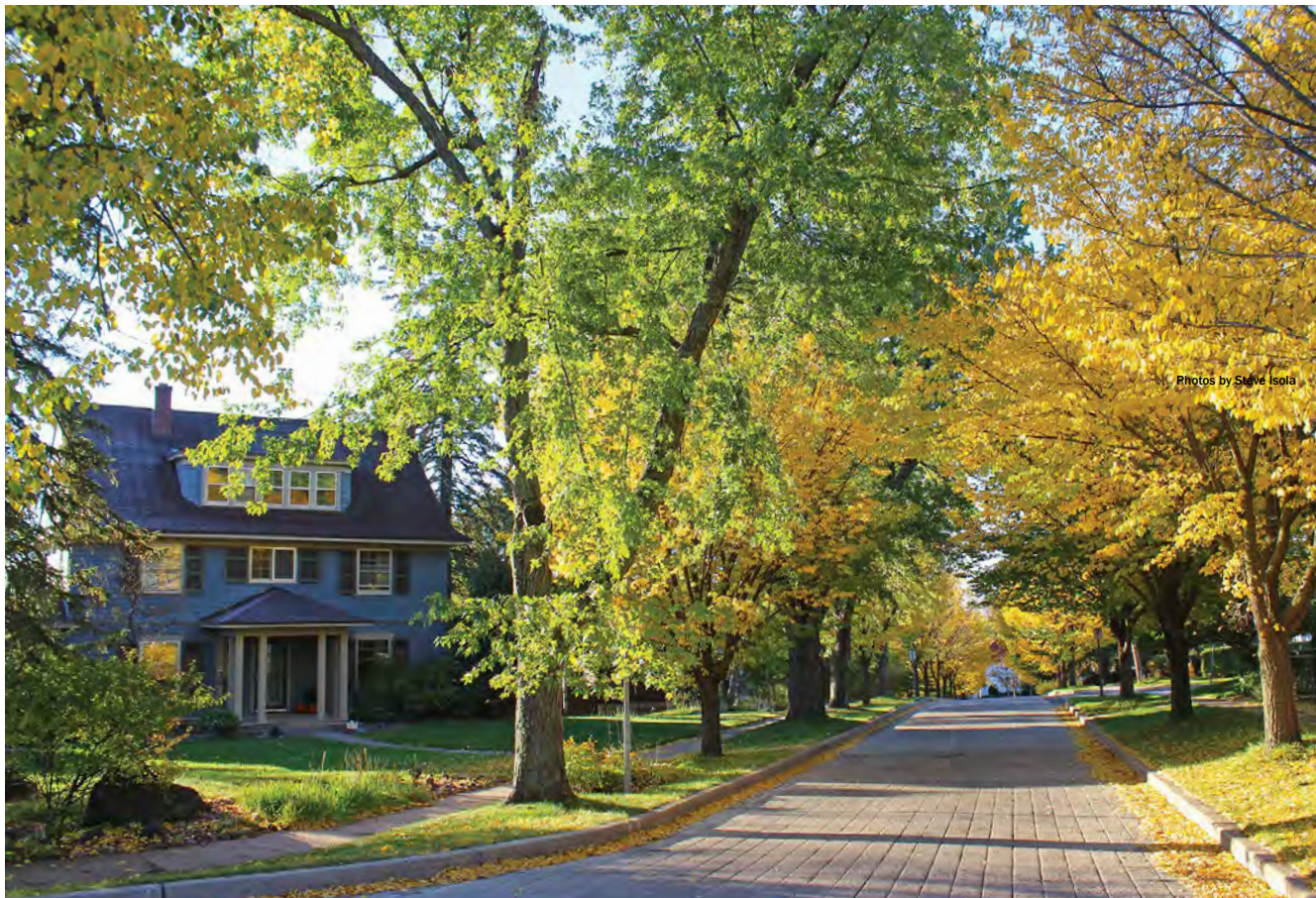
Duluth's great livability has been recognized by several national magazines. In 2014, Duluth won *Outside* magazine's Best Outdoors Town contest. *Money* magazine has ranked Duluth several times as one of the best cities to live in the country.

The city offers affordable single-family homes and condominium/town home properties, with newer housing options being built downtown and throughout the community. Large, older homes with panoramic views of Lake Superior perch on Duluth's extensive hillside, while beautiful, turn-of-the-century mansions line the coast of Lake Superior. Duluth's distinctive history is also evident in the western communities of Morgan Park and Spirit Mountain, where the homes and neighborhoods were originally created for U.S. Steel plant workers.

Rental options range from apartment complexes to older renovated homes to new townhomes. Many apartments are located near Duluth Transit Authority bus lines. Others include extra perks such as snow removal, controlled access and proximity to parks and other recreational areas. Many rental units and homes feature off-street parking, but for those that don't, alternate side parking is effective year-round in Duluth.

Campus Park, Boulder Ridge and Summit Ridge offer popular

housing destinations for local college students. BlueStone Lofts – a housing development near the University of Minnesota Duluth geared toward college students and professionals – opened in 2013 and the adjacent, upscale BlueStone Flats opened in spring 2016. The development's newest BlueStone Vue opened in 2021 and offers a variety of accommodations. All three complexes are within walking distance of The Shops at BlueStone, featuring restaurants and retail stores. Kenwood Village, a retail and housing complex on the corner of Kenwood Avenue and Arrowhead Road, and ENDI Apartments on the corner of 21st Avenue East and London Road, also opened in 2016. Both feature upscale amenities as well as convenient access to retail shopping and restaurants. District Flats at Miller Hill opened in 2018, providing 72 units in the heart of Duluth's Miller Hill Mall area and its diverse options for shopping, dining and entertainment. New residential developments continue to open around the community. Enger Lofts and Lincoln Park Flats are new apartment options in the popular Lincoln Park Craft District. Entrepreneurs are keen to create unique living spaces in Duluth, as evidenced in 2023 by the opening of the 33-unit Leijona, formerly the St. Louis County Jail, and the 122-unit Zenith DCHS in the iconic Central High School building. ■



APARTMENTS/RENTAL PROPERTY/TOWNHOMES

BlueStone Lofts

101 Summit St.
Duluth, MN 55803
218-724-3505
Fax: 218-464-5068
www.bluestoneduluth.com

Board of Trade Lofts

301 W. First St.
Duluth, MN 55802
218-464-6727
www.duluthboardoftradelofts.com

Boulder Ridge Luxury Apartment Homes

502 Boulder Drive
Duluth, MN 55811
218-728-3700
www.boulderridgeduluth.com

Campus Park

2338 Rice Lake Road
Duluth, MN 55811
218-727-2400
Fax: 218-720-3986
www.campusparkmn.com

Center City Housing Corp.

105 1/2 W. First St.
Duluth, MN 55802
218-722-7161
Fax: 218-720-3483
www.centercityhousing.org

Chesterwood Apartments

723 Kenwood Ave.
Duluth, MN 55811
218-724-4990
www.thiestalle.com

Condo & Home Advisors

6311 Homestead Road
Duluth, MN 55804
218-720-3987
Fax: 218-525-1491
www.apartmentadvisorsduluth.com

Cove Apartments

5 W. 1st Street
Duluth, MN 55802
218-394-3997
www.liveatcove.com

Hillside Gardens

419 Seventh St.
Proctor, MN 55810
218-624-2371
Fax: 218-624-3608
www.hillsidegardens.trellismn.org

Ramsey Village Townhomes

5402 Ramsey St.
Duluth, MN 55807
218-624-2344
Fax: 218-628-7032
www.thiestalle.com

Summit Real Estate

6770 Stillwater Blvd. N., Ste. 110
Stillwater, MN 55082
651-689-2200
Fax: 651-689-2205
www.summitre.net



Summit Ridge Luxury Apartments

901 Boulder Drive
Duluth, MN 55811
218-728-0444
Fax: 218-720-3986
www.summitridgeduluth.com

Titanium Partners

1330 E. Superior St., Ste. 202
Duluth, MN 55802
218-590-8205
www.titaniumpartnersllc.com

Vue at BlueStone

120 Summit St.
Duluth, MN 55803
218-461-3777
www.vueatbluestone.com

HOUSING

BlueStone Flats

133 Summit St.
Duluth, MN 55803
218-461-3800
www.bluestoneflats.com

Capstone Apartments

4725 Matterhorn Circle
Duluth, MN 55811
218-355-0998
www.capstone.apartments

Housing & Redevelopment Authority of Duluth

222 E. Second St.
Duluth, MN 55805
218-529-6300
Fax: 218-529-6344
www.duluthhousing.com

One Roof Community Housing

12 E. Fourth St.
Duluth, MN 55805
218-727-5372
Fax: 218-727-3646
www.1roofhousing.org

MANUFACTURED HOUSING & MODULAR HOUSING

Zenith Terrace

2 Foxtail Ave.
Duluth, MN 55810
218-628-2259
Fax: 218-628-9672
www.zenithterrace.com

PROPERTY MANAGEMENT

Avalon Alliance Property Management

P.O. Box 3684
Duluth, MN 55803
218-213-5001
www.avalonduluth.com

East West Property Management

1720 W. Superior St. Ste. 2
Duluth, MN 55806
218-464-6727
www.eastwestrentals.com

Encompass Real Estate Investing Services

306 W. Michigan St., Ste. 300
Duluth, MN 55802
218-720-3712
Fax: 218-720-3860
www.encompass.rent

Heirloom Property Management

202 E. First St.
Duluth, MN 55802
218-390-4317
www.rentwithheirloom.com

Messina & Associates Real Estate

1512 E. Superior St.
Duluth, MN 55812
218-728-4436 • 800-385-8842
Fax: 218-728-2322
www.mzr.com

Oneida Realty Co.

306 W. Superior St., Ste. 1605
Duluth, MN 55802
218-722-0816
Fax: 218-720-6879
www.oneidacres.com

P&R Twin Ports LLC

2306 W. Superior St.
Duluth, MN 55806
218-722-3645
www.PRProperties.org

ShipRock Management

1324 E. Fourth St., Ste. B
Duluth, MN 55805
218-740-3800
Fax: 218-722-1436
www.shiprockmanagement.com

Thies & Talle Management

715 W. Second St.
Duluth, MN 55806-2267
218-722-2568
Fax: 218-722-6493
www.thiestalle.com

Titanium Partners

1330 E. Superior St., Ste. 202
Duluth, MN 55802
218-590-8205
www.titaniumpartnersllc.com

REAL ESTATE

A&L Properties

11 E. Superior St., Ste. 130
Duluth, MN 55802
218-727-9556
Fax: 218-727-9559
www.alproperties.us

Adolphson Real Estate - Duluth

4815 W. Arrowhead Road, Ste. 240
Duluth, MN 55811
218-722-8736
Fax: 218-722-8807
www.adolphsonrealestate.com

AtWater Properties Group

310 E. Superior St., Ste. 225
Duluth, MN 55802
218-727-8122
Fax: 218-727-8564
www.atwatercommercial.com

Bachand Group

722 Tower Ave.
Superior, WI 54880
715 394-4667
www.bachandgroup.com

CENTURY 21 Atwood

4140 Richard Ave., Ste. 100
Duluth, MN 55811
218-722-8221
www.C21Atwood.com

Coldwell Banker Realty

1732 London Road
Duluth, MN 55812
218-730-2299 • 800-628-9212
Fax: 218-728-1114
www.coldwellbanker.com

(Continued on next page.)

Edina Realty - Ken Larson
P.O. Box 24499
Minneapolis, MN 55424
218-390-2100
www.edinarealty.com/kenneth-larson-realtor

Edmunds Co. Real Estate, Sales & Development LLP
2200 Water St.
Duluth, MN 55812
218-724-7900 • 800-777-4531
Fax: 218-724-8026
www.edmundsrealestate.com

Jordan DeCaro Real Estate Team
2156 London Road
Duluth, MN 55812
218-428-0861
www.decarorealestate.com

Loam Commercial Real Estate LLC
315 Elton Hills Drive NW, Suite 300
Rochester, MN 55901
507-358-6100

Marine Iron Properties
325 Lake Ave. S., Ste. 705
Duluth, MN 55802
218-349-1972

Messina & Associates Inc.
1512 E. Superior St.
Duluth, MN 55812
218-728-4436 • 800-385-8842
Fax: 218-728-2322
www.mzr.com

Specializing in residential, investment property, property management and corporate housing. We provide relocation services, free market analysis, and buyer and seller representation. Access our properties through our website at www.MZR.com.

Call toll-free 800-DULUTH2. Our second location can be found at 4925 Matterhorn Drive, Duluth.
www.mzr.com

Messina & Associates Real Estate - Deanna Bennett
1512 E. Superior St.
Duluth, MN 55812
218-343-8444
Fax: 218-728-2322
www.deannabennett.com

Minnesota Power Land & Real Estate Management
30 W. Superior St.
Duluth, MN 55802
218-723-3981 • 888-526-3648
Fax: 218-355-3827
www.mpland.com

Real Estate Consultants
6103 Pizzarro St.
Duluth, MN 55807
218-343-3107
recduluth.com

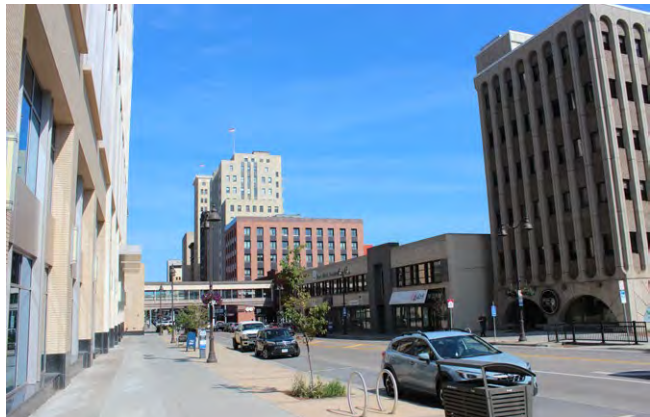
Reasor Properties Inc.
130 E. Ninth St.
Duluth, MN 55805
218-723-1156
Fax: 218-723-1156

RE/MAX Results - Emily Kalligher
2520 Maple Grove Road
Duluth, MN 55811
218-722-2810
www.results.net

RE/MAX Results - London Road
2516 London Road
Duluth, MN 55812
218-722-2810
www.results.net

Sathers J.S. Realty
5112 Midway Road
Duluth, MN 55811
218-729-9784
www.js-realty.com

Titanium Partners
1330 E. Superior St., Ste. 202
Duluth, MN 55802
218-590-8205
www.titaniumpartnersllc.com



REAL ESTATE - COMMERCIAL & INDUSTRIAL

AtWater Properties Group
310 E. Superior St., Ste. 225
Duluth, MN 55802
218-727-8122
Fax: 218-727-8564
www.atwatercommercial.com

Calhoun Companies
158 Evergreen Road
Lutsen, MN 55612
218-663-7682
Fax: 218-663-7091
www.calhouncompanies.com

F.I. Salter Co. Inc.
800B W. Railroad St.
Duluth, MN 55802
218-722-5556
Fax: 218-720-6684
www.fisalter.com

Greg Follmer Commercial Real Estate
230 E. Superior St.
Duluth, MN 55802
218-310-0013
Fax: 218-728-2322
www.GregFollmer.com

Kleiman Realty
1934 London Road
Duluth, MN 55812
218-722-9900
www.kleimanrealty.com

Oneida Realty Co.
306 W. Superior St., Ste. 1605
Duluth, MN 55802
218-722-0816
Fax: 218-720-6879
www.oneidacres.com

Titanium Partners
1330 E. Superior St., Ste. 202
Duluth, MN 55802
218-590-8205
www.titaniumpartnersllc.com

Wilson Development
P.O. Box 3027
Duluth, MN 55803
218-348-1800





ECONOMY

DEVELOPMENT, INVESTMENT AND EMPLOYMENT

The city of Duluth is the hub of a thriving region in Northeastern Minnesota called the Arrowhead, and Duluth is positioned to benefit from economic opportunities for years to come.

Its international seaport – by far the busiest and largest by tonnage on the Great Lakes – provides our nation’s heartland access to the world through the St. Lawrence Seaway. The transport of natural resources like iron ore, coal and limestone helped build the area’s economy and fuels its growth. Today, more than 11,500 jobs and \$1.5 billion in business revenues are tied to shipping through the Port of Duluth-Superior, which moves an average of 35 million short tons of cargo a year. In addition, shipments of grain, wind turbine components, forest products, steel and other energy-related, heavy-lift cargo have earned the port top honors as a highly efficient, multimodal transportation hub. A nearly \$18 million redevelopment project at the Clure Public Marine Terminal, including a 26-acre expansion, is now complete. The first rail-served intermodal container ramp in the Twin Ports opened in March 2017 – an alliance between CN and Duluth Cargo Connect. The CN Duluth Intermodal Terminal now connects our region to containerized imports and exports through a rail network spanning the continent, providing direct service to east, west and Gulf Coast ports.

Duluth and its neighboring communities have benefited from the expansion of new industries in health care, precision manufacturing, metal fabrication and aerospace. The Duluth International Airport is a vital economic driver in retaining and developing new businesses throughout the region. It supports more than 5,000 aviation-related jobs at places such as the 148th Fighter Wing, Cirrus Aircraft, Monaco Air Duluth, Lake Superior Helicopters and Lake Superior College’s Center for Advanced Aviation. With Delta, United Airlines and Sun Country serving approximately 300,000 business and leisure passengers annually, the airport is a key asset that generates a \$1.3 billion annual economic impact.

More than \$150 million in capital improvements have recently been completed at the airport, including a new and improved fixed-based operator, a Category II instrument landing approach system, an auto-parking system, in-line baggage screening and a new passenger terminal. The updated terminal is energy efficient, LEED



certified and provides a first-class customer experience with streamlined passenger screening, an expansive concourse with amenities and 24-hour accommodations for international flights. In addition, the airport will soon begin construction of a new air traffic control tower, using grant funds provided by the FAA.

Approximately \$1.6 billion in community investments began in 2020. Nearly \$1 billion of that alone is coming from Essentia’s investment in downtown Duluth’s medical district. Costco Wholesale opened its doors in the fall of 2021, and housing projects around the community will bring much needed residential options to the area.

The thriving tourism component of our city’s economy generates more than a \$950 million impact per year. Duluth annually welcomes 6.7 million tourist visitors who enjoy diverse outdoor recreation opportunities all year round, as well as arts and entertainment.

Several organizations proactively partner to facilitate business expansion and retention in the Twin Ports. These groups include the City of Duluth, the Duluth Economic Development Authority, the Duluth Seaway Port Authority, the Duluth Area Chamber of Commerce and Chamber Foundation, Minnesota Power, APEX (Area Partnership for Economic Expansion), Entrepreneur Fund, University of Minnesota Duluth’s Center for Economic Development, the Small Business Development Center at the University of Wisconsin-Superior and Northspan Group and its Northland Connection.

The Duluth Workforce Center provides resources and services for employment, training and other workforce development needs. Its premier resource is the online Minnesota Job Bank, one of the largest and best workforce tools in the state. Employers and employees alike can easily establish a job bank account by logging on to www.mnworks.org.

Duluth residents choose to live here because of the area’s quality of life and because of our award-winning schools, our 13 college and university campuses and excellent health care options. Our dedicated workforce demonstrates a strong work ethic, resulting in higher productivity, minimal turnover and a thriving economy. ■

(Continued on next page.)



CONSULTANTS - BUSINESS

Boost Advising
218-260-0483

Glumac Executive Enterprise
7120 Milford St.
Duluth, MN 55807
218-391-4350
www.glumac.biz

Metamorphosis CCT LLC
5907 Cant Road
Duluth, MN 55804
218-428-9501
www.metamorphosiscct.com

Powerhouse Advisory Group
1009 15th St.
Cloquet, MN 55720
530-307-3590
www.powerhouseadvisorygroup.com

Promoting Me, LLC
1403 Avenue C., Suite 5
Cloquet, MN 55720
218-393-6670
www.promotingme.com

RSM US LLP
227 W. First St., Ste. 700
Duluth, MN 55802
218-727-5025
www.rsmus.com

Salo – a Korn Ferry Company
701 N. Washington Ave., Ste. 500
Minneapolis, MN 55401
866-221-1561

Trinity Creek Consulting
3601 Trinity Road
Duluth, MN 55811
218-310-2627
www.trinitycreekllc.com



CONSULTANTS - BUSINESS & TECHNOLOGY

Downtown Computer
1601 London Road
Duluth, MN 55812
218-733-0400
Fax: 218-727-0130
www.downtowncomputer.com

RSM US LLP
227 W. First St., Ste. 700
Duluth, MN 55802
218-727-5025
www.rsmus.com

ECONOMIC DEVELOPMENT

APEX-Area Partnership for Economic Expansion
306 W. Superior St., Ste. 902
Duluth, MN 55802
218-740-3667
www.apexgetsbusiness.com

Duluth Seaway Port Authority
802 Garfield Ave.
Duluth, MN 55802
218-727-8525
www.duluthport.com

Entrepreneur Fund
202 W. Superior St., Ste. 311
Duluth, MN 55802
218-623-5747
www.entrepreneurfund.org

Innovate 218 with IEDC
12 NW 3rd St.
Grand Rapids, MN 55744
218-326-9411
www.itascadv.org

Local Initiatives Support Corp. (LISC)
202 W. Superior St., Ste. 301
Duluth, MN 55802
218-727-7761
www.duluthlisc.org

EMPLOYMENT

CareerForce
402 W. First St.
Duluth, MN 55802
218-302-8400
www.careerforcemn.com

Spherion Staffing
11 E. Superior St., Ste. 150
Duluth, MN 55802
218-722-8003
www.spherion.com

EMPLOYMENT - TRAINING

Vocational Rehabilitation Services of Duluth
402 W. 1st St.
Duluth, MN 55802
218-407-3182
mn.gov/deed/job-seekers/disabilities

City of Duluth - Workforce Development
402 W. First St.
Duluth, MN 55802
218-302-8400
www.duluthmn.gov/workforce-development

True North Goodwill
700 Garfield Ave.
Duluth, MN 55802
218-722-6351
www.goodwillduluth.org





BUILDING OUR CITY

DEVELOPMENT, INVESTMENT AND EMPLOYMENT

The year 2023 will be remembered as the year the single largest investment in Duluth's history was completed with the opening of the \$900 million Essentia Vision Northland project. But it was just one of many investments in the city's future by a variety of entrepreneurs in housing, dining, retail and health care.



St. Luke's Obstetrics & Gynecology Associates Wing

1001 E. Superior St., Suite 301

When it came time to start having the conversations that led to a completely new St. Luke's Obstetrics & Gynecology Associates wing in the Lakeview Building, many topics were considered at length, and many voices were heard in the process. Just about anyone who would be working in the new location was consulted, and the talents of many local designers and contractors were employed. It was a complicated, involved process that has resulted in a much-improved OB-GYN experience for St. Luke's patients.

The list of improvements is long, but it includes a doubling of available space, a more welcoming lobby and reception area that aims to be more family friendly, large windows with lake views, an expansion from 15 to 24 exam rooms, private nursing rooms and more. All told, it's a change that was very much needed and is very welcome for both patients and staff.

"It was right around this time, maybe February of [2022]," said Mike Boeselager,

St. Luke's Vice President of Support Services, "when we solidified a plan... Addressing community need was a pivotal point."

Boeslager said planning relied heavily on physicians' input with the idea that they would help in creating an environment in which everyone involved could do their best work. St. Luke's then hired contractors who could make those things happen.

"We had DSGW as an architect, and they've designed many of our clinics, and they have insight into what health programs look like and how to take care of patients," Boeslager said.

Ultimately, the space was designed for families, but it was all part of a larger plan at the hospital to create a state-of-the-art health care campus of the future.

"This is part of St. Luke's Health Forward Initiative," Boeslager said. "So, we have a multi-year plan, sort of a phased plan to redevelop our campus. We're starting phase two. It also includes other things like building a parking ramp and remodeling the hospital."

"The moment you step out of that elevator, you have our registration staff, and you can

already start seeing part of the lake," said Mitch Gifford, who manages St. Luke's Obstetrics and Gynecology Associates as well as St. Luke's Pediatric Associates. "As you move through your visit, you go to the lobby, where you can see the lift bridge. The look is very modern, but calming. We have nice rounded shapes throughout the space, versus those squared-off points."

The new wing is on some levels a reaction to the previous one. "Our space was quite small, for the amount of patients we were seeing," Gifford said. "The exam rooms were a little small. We had just outgrown it, and we needed something a little more suited for what our patients' needs are. A little more privacy, more exam rooms, larger exam rooms."

It all adds up to a project that is both utilitarian and also enjoyable to spend time in. "We always make sure that we're on the leading edge of technology but also the leading edge of design, and that's the part I think that is really highlighted here," Boeslager said.

Essentia Vision Northland

402 E. 2nd St.

Four years after breaking ground, the gleaming 21-story (counting the helipad on top) Essentia Vision Northland opened its doors to patients in late July 2023.

It's been an epic journey since construction for the \$900 million project began. This largest building investment in Duluth's history went up during the difficult pandemic times, which resulted in subsequent supply chain issues that presented unanticipated challenges, yet the project remained on track thanks to the dedication of general contractor McGough Construction and the many local, regional, state and national sub-contractors who worked on the project.

The 942,000 square feet of space represents a consolidation of Essentia Health's campus while also reducing its overall footprint in the Central Hillside neighborhood.

Once Essentia made the decision to go

(Continued on next page.)

forward with a new hospital they selected the Philadelphia-based architectural and design firm of EwingCole as the architect of record for the project. It didn't take long before the project team at EwingCole reached out to local architectural and engineering firm LHB to see how they could collaborate.

Evan Aljoe, lead member of LHB's health care team, became the project manager for LHB's portion of the work, coordinating activity between EwingCole and the general contractor, McGough Construction.

"It wasn't just our architectural expertise, but our structural, mechanical and electrical teams were involved as well, and our civil department performed all the civil work for the entire project. They reached out to us because of our past history with and knowledge of Essentia, the campus and the buildings, as well as our continuing work with the city on the civil front," recalled Aljoe.

The project came ready-made with challenges.

"Hospitals are complicated," said Jeff Dzurik, Executive Vice President - Project Management for McGough Construction. "Building in downtown Duluth across two blocks that has 110 feet of grade change is complicated. You know, building on very, very durable rock directly adjacent to active medical facilities is complicated. Building buildings over the top of active medical facilities is complicated. But again, you know, the team is essential, and all of our construction trade partners came together to get it over the finish line."

Ultimately, the project was meant to benefit Essentia patients. That's why 26 working groups were involved in the design process, to ensure the most efficient and technologically sound building for patient care.

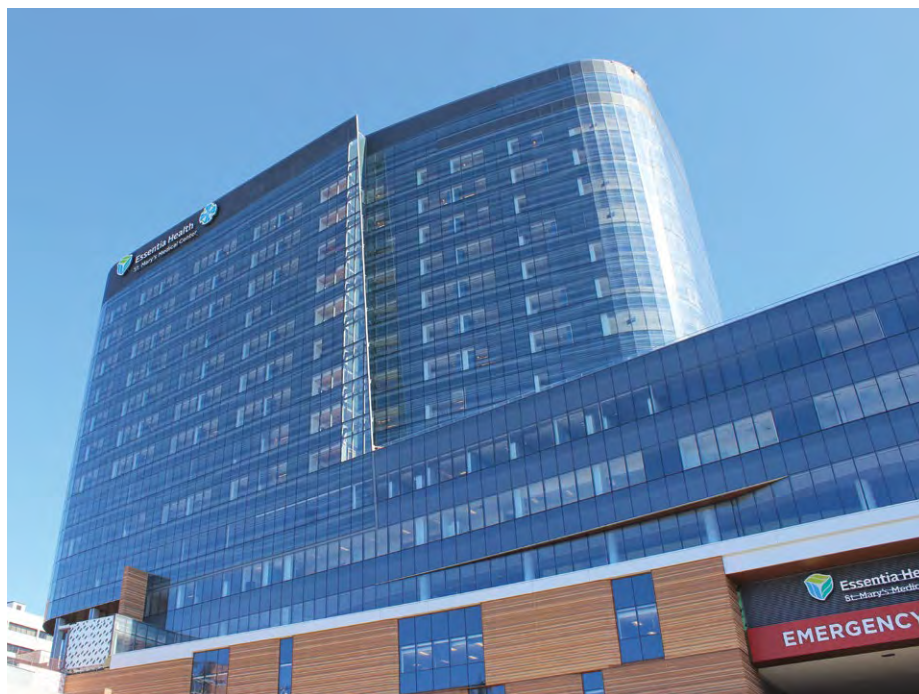
"Our goals are to improve the patient and staff experience. It all goes back to the planning process, where we had hundreds of meetings," said Dr. Robert Erickson, Essentia gastroenterologist and physician lead for the project. "We wanted to make it the most user-friendly workplace that we possibly could. All along, we have had staff come with us on this journey."

Anyone who has ever had to share a hospital room will be happy to know that almost all the 342 rooms in the new building are for single patients. There is a total of 344 beds in those 342 rooms.

"Our hallmark is the patient floors, the private patient rooms," Erickson said. "We do believe a single-patient room will definitely be improving the patient experience."

Patients, family and staff can also enjoy the 30,000-square-foot roof garden on the 8th floor.

Dr. Erickson also mentioned "a very



unique CT angiogram suite" where they can find the defects and the vascular surgeon can intervene right there rather than moving the patient from the CT scan."

There is also the aforementioned helipad on top of the building. "We have direct access now down to the ER so patients don't have to be transported through multiple hallways when they're very ill," Erickson said.

"We wanted a building that was going to be not only technologically up to date now but in the future," Erickson said.

Grindstone Apartments

4050 Haines Road

Husband-and-wife duo Whitney and Corey Kolquist became landlords last year when they began renting out their brand-new

33-unit Grindstone Apartments. It's the team project the couple has dreamed about since first meeting as students at the University of North Dakota in 2014.

"Corey grew up in Hermantown, and we own Skyline Social and Games," Whitney said. "He had the foresight back in 2014 to purchase the property at 4050 Haines Road. It was his grandpa's property, and he just held onto it for eight years. It was rented out as a duplex during that time. We've always wanted to get into real estate, and so last year we pulled the trigger and started construction in April of 2022."

While Corey runs Skyline, which he and Whitney purchased from his parents in 2022, Whitney works for Badlands Contracting as a manager in oil and gas construction. They



Grindstone Apartments



each brought specific skill sets to the apartment construction project.

She served as the project manager, managing the construction, while Corey focused on the financials of the project.

"Real estate is attractive because it's a passive-income business," Whitney said. "We're going to be managing the property ourselves, and we have staff already at Skyline that will synergize with needs at the property, like lawn mowing, snow removal, cleaning, maintenance – stuff like that. But the main driver behind deciding to do the project was that there is a definite need in the area for good, solid housing. I wouldn't consider Grindstone luxury apartments – I think we're probably a step below what would be considered 'luxury' in the area – so our rents are a little bit lower, but it's still a really good product."

Whitney said their primary targets are young professionals and retirees.

Corey Kolquist said the Grindstone project was "a lot of fun for us," as it involved he and his wife starting from the ground up both literally and figuratively. "I consider myself

very fortunate that my partner is just as excited about development and growing businesses as I am. It makes it a lot of fun."

"I tell you what," Corey added, "we have learned so much. It's been a very fun project, you know – extremely stressful at times, but very rewarding, as well. At the end of the day, the biggest thing is that we knew we were going to learn a lot, and we certainly have."

Corktown Deli & Burger Paradox

102 S. 27th Ave. W., 2113 W. Superior St.

Tom Hanson continues to make his mark on the Lincoln Craft District. It all started in 2001 with the Duluth Grill. That was followed by OMC Smokehouse and Corktown Deli & Brews.

Last year Hanson moved Corktown Deli – which was in desperate need of a bigger space – from West Superior Street to the former Duluth Stove and Fireplace building next door to Duluth Grill.

And just two blocks west from the former Corktown Deli location, a new restaurant was opened at the same time, Burger Paradox, serving smash burgers in a dive bar setting.

Hanson made the decision to bring on partners in his growing operation. He searched no further than his own Duluth Grill staff.

Today, his vested partners – Louie Hanson, Jeff Petcoff and Dan LeFebvre – each oversee one restaurant apiece while also helping with the bigger picture.

"I look at these three younger guys," Hanson said. "Louie is my son, and Jeff is his friend from high school, and Dan came to us as a freshman in college. [I realized] if I don't find them more responsibility, they're just going to quit."

The Burger Paradox project moved quickly – they moved into the former Coach's Bar and Grill (aka Mitch's Bar and Grill) March 2023 and opened on May 21. "We had 142 applicants for this tiny little burger restaurant," LeFebvre said. "It was the fastest I've ever seen a team come together."

Zenith DCHS Apartments

215 N. 1st Ave. E.

The Historic Old Central High School in downtown Duluth has stood tall for more than a century on East Second Street. Although it

(Continued on next page.)

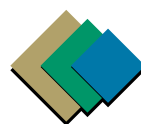
CARPET • HARDWOOD • LAMINATE • VINYL • CERAMIC

Zenith DCHS Apartments



Corktown Deli and Brews

**The Area's Leader in Commercial
and Industrial Floor Coverings.**



CONTRACT
TILE AND CARPET, LLC
COMMERCIAL FLOORING SPECIALISTS

537 Garfield Ave. Duluth, MN 55802 • 218-723-4056 • Fax 218-723-4058 • www.contracttileandcarpet.com



hasn't served as a high school the last 50 years, the stately edifice has remained, looming large over the landscape.

The product of much planning and work by developers, contractors and city officials through a number of years, Zenith DCHS has opened its doors to all manner of tenants, from single people to families, and it aims to provide more choice to those looking for suitable living spaces in the area.

There are many potential upsides to this new apartment building, which was developed by the Twin Cities-based Saturday Properties, a boutique development and property-management group in operation since 2015.

"We first became aware that it was being marketed for sale in 2020," said Mark Lavery, Saturday Properties' Chief Development Officer. "We always like to be working on at least one historic rehab. Our company is focused on housing. We think

there's an array of housing needs that need to be addressed. This one popped up, and it was hard not to want to go and start looking into it."

Having determined that the school was in fact right up their alley, Saturday made an offer, and the school district accepted.

"One thing that's unique is the amount of natural light," Lavery said. "When we see a lot of historic rehabs done, it might be a conversion of an old warehouse [without] many windows."

In the case of the old Central building, it had been erected when electricity wasn't available, so they needed big windows to invite as much natural light in as possible.

"You end up with these apartments that are going to have way more natural light than any new building," Lavery said. "We think it's a fantastic way to go."

Josh Beatty is the property manager hired to manage the day-to-day operations.

Beatty sees Zenith DCHS as not just an apartment building, but something that could help to herald a new era in town.

"I feel like, for the downtown area, this could be a little bit of a rebirth – a renaissance for the area," he said. "It's fallen on some hard times, and I think and hope this will really be a spark for downtown to bring it back to what it once was. The different business owners that I've gotten to know, they're hoping the same thing. So, they're on the same page and are motivated and passionate to really change the area and make it something that people desire to be around."

The selling points are many. "Obviously, the building itself is super unique," Beatty said. "There's some really cool spaces. The auditorium. We have a couple of lounges. We'll have some co-working spaces that I have not seen much here in Duluth. With the push for a lot of professionals working from home, it's really nice for them to have places within the building to kind of escape to, to have a change of pace. We'll also have pickleball!"

It's definitely intended to be its own sort of self-contained neighborhood.

"That's kind of our bread and butter with Saturday Properties," Beatty said. "We do that through curated spaces that are accessible, with people meeting each other and just feeling involved. We're planning at least one community event per month. We have quite a few ideas we've done already, in the past." ■

CHAMBER MEMBERS INVOLVED IN THESE PROJECTS:

- Arrowhead Concrete Works
- A.W. Kuettel & Sons, Inc
- Belanger, Inc.
- Benson Electric Co.
- Contract Tile & Carpet
- Corktown Deli
- DSGW Architects, Inc
- ESC Systems Sound & Life Safety
- Essentia
- Goodin Inc.
- Grindstone Properties
- Hartel's Disposal
- Heritage Window & Doors
- Hunt Electric Corp.
- Johnson Wilson Constructors
- LHB, Inc.
- Northern Door & Hardware
- Jamar Company
- Johnson Carpet One
- * Johnson-Mertz Appliance
- Kraus Anderson
- McGough Construction
- National Bank of Commerce
- Northern Door & Hardware Inc.
- Northland Constructors of Duluth
- Northern Trends Building & Design Inc.
- Scalzo Architects
- St. Germain's Cabinet, Inc.
- St. Germain's Glass
- St. Luke's
- Veit Companies.
- Viking Automatic Sprinkler Co.
- Viking Electric

Your Electrical Service Team

Essentia Health



Grindstone Apartments

- Commercial
- Industrial
- Residential
- Great Lakes Marine
- Design-Build
- Low Voltage/Fiber
- Electric Motors
- Service & Maintenance
- Solar Panel Installation
- Electric Vehicle Chargers
- Generators
- Backup Power



BENSON ELECTRIC CO.

Contractors • Manufacturers • Engineers

1102 N. 3rd Street, Superior • 715-394-5547
TM Electric Motors - 715-392-4202



EDUCATION

PUBLIC AND PRIVATE SCHOOLS & UNIVERSITIES, EARLY CHILDHOOD PROGRAMS & CHILD CARE

Home to a wide array of learning institutions – from early childhood to post-secondary schools – Duluth boasts an excellent and diverse educational system that provides lifelong learning opportunities for residents of all ages.

Duluth offers an abundance of early childhood education options to meet the needs of children and families. Parents are able to make educated choices regarding where to enroll their children during these formative years of rapid growth and development. The community offers public and private early childhood programs, full- and part-time programs, nursery school, family childcare, and licensed and nationally accredited child-care centers with infant through school-age programs.

The fall of 2013 concluded the Duluth Public Schools Long Range Facilities Plan with the goal to improve educational opportunities for all Duluth Public Schools students. The plan was designed to create a more efficient school system focused on providing an education rivaling the best Minnesota has to offer while serving to attract tomorrow's families with the best possible schools. Benefits include critical investments for safety and education quality, smarter use of school resources, greener, more energy-efficient schools and value for taxpayers. In total, 13 schools throughout the city have been completely transformed into modern, sustainable, quality learning facilities. Additional renovations have been completed in several schools in recent years, with more scheduled in the coming years.

Additionally, three major universities, a number of community colleges and several specialized business schools are located in the Duluth area. University students comprise approximately 18 percent of Duluth's population. These students – who hail from the Duluth area and across Minnesota, the nation and the world – are a major economic driver for the area and provide regional employers immediate access to an educated workforce. ■



(Continued on next page.)

EVERY STUDENT. EVERY DAY.

Learning • Excellence • Equity • Collaboration • Belonging



Duluth Public Schools (ISD 709)

Superintendent: John Magas

For enrollment questions, call 218-336-8739, call the individual school listed, visit www.ISD709.org or email info@ISD709.org. For attendance area and transportation questions, call 218-336-8970. To enroll online: www.ISD709.org/enroll.

ELEMENTARY SCHOOLS

CONGDON PARK

Grades K-5
3116 E. Superior St. 55812
218-336-8825
Fax: 218-336-8829
Kathi Kusch-Marshall

HOMECROFT

Grades K-5
4784 Howard Gnesen Road
218-336-8865
Fax: 218-336-8869
Tom Cawcutt

LAKEWOOD

Grades K-5
5207 N. Tischer Road
218-336-8870
Fax: 218-336-8874
Darren Sheldon

LAURA MACARTHUR

Grades K-5
720 N. Central Ave.
218-336-8900
Fax: 218-336-8904
Jim Erickson

LESTER PARK

Grades K-5
5300 Glenwood St.
218-336-8875
Fax: 218-336-8879
Susan Lehna

LOWELL

Grades K-5
2000 Rice Lake Road
218-336-8895
Fax: 218-336-8899
Eve Hessler

MYERS-WILKINS

Grades K-5
1027 N. Eighth Ave. E.
218-336-8860
Fax: 218-336-8864
Amy Worden

PIEDMONT

Grades K-5
2827 Chambersburg Ave.
218-336-8950
Fax: 218-336-8954
Jennifer Bobbe

STOWE

Grades K-5
715 101st Ave. W.
218-336-8965
Fax: 218-336-8969
Nathan Glockle

MIDDLE SCHOOLS

LINCOLN PARK

Grades 6-8
3215 W. Third St.
218-336-8880
Fax: 218-336-8894
Brian Kazmierczak

ORDEAN EAST

Grades 6-8
2900 E. Fourth St.
218-336-8940
Fax: 218-336-8949
Gina Kleive

HIGH SCHOOLS

DENFELD

Grades 9-12
401 N. 44th Ave. W.
218-336-8830
Fax: 218-336-8844
Thomas Tusken

EAST

Grades 9-12
301 N. 40th Ave. E.
218-336-8845
Fax: 218-336-8859
Danette Seboe

OTHER PROGRAMS

ACADEMIC EXCELLENCE ONLINE (AEO)

215 N. First Ave. E.
218-336-8766
Fax: 218-366-8768
Chris Vold

DULUTH AREA LEARNING CENTER (ALC)

11 E. Superior Street, Ste. 140
218-336-8756
Fax: 218-336-8770
Nathan Glockle

ADULT BASIC EDUCATION

325 W. First St., 3rd Floor
218-336-8790

ARROWHEAD ACADEMY

1918 Arlington Ave. N.
218-625-6766

CHESTER CREEK ACADEMY

Grades 1-12
714 1/2 W. College St.
218-216-8325

MERRITT CREEK ACADEMY

Grades 1-12
4000 W. Ninth St.
218-625-2689

ROCKRIDGE ACADEMY

Grades 6-12
4849 Ivanhoe St.
218-336-8955

SUPERIOR ACADEMY

615 Pecan Ave.
218-355-2100

EARLY CHILDHOOD PROGRAMS

DULUTH PRESCHOOL/HEAD START/SCHOOL READINESS

215 N. First Ave. E.
218-336-8815
Fax: 218-336-8819
Sheryl Williams

EARLY CHILDHOOD FAMILY ED (ECFE)

215 N. First Ave. E.
218-336-8815
Fax: 218-336-8819
Jennifer Jaros

EARLY CHILDHOOD SCREENING

2102 N. Blackman Ave.
218-336-8816
Fax: 218-336-8743
Kathy Johnson

EARLY CHILDHOOD SPECIAL EDUCATION (ECSE)

218-336-8744
Fax: 218-336-8743
Jason Crane

BOARD OF EDUCATION

DISTRICT #1

Rosie Loeffler-Kemp
218-525-6878
Rosalie.Loeffler-Kemp@isd709.org

DISTRICT #2

Sarah Mikesell
218-206-6932
Sarah.Mikesell@isd709.org

DISTRICT #3

Henry Banks
218-461-1690
Henry.Banks@isd709.org

DISTRICT #4

Jill Lofald
218-391-4696
Jill.Lofald@isd709.org

AT LARGE

Kelly Durick Eder
701-741-6003
Kelly.DurickEder@isd709.org

AT LARGE

Stephanie Williams
218-260-2957
Stepahnie.Williams@isd709.org

AT LARGE

Amber Sadowski
218-393-6952
Amber.Sadowski@isd709.org

CHILD CARE

Child Care Resources & Referral:

Child Care Aware of Minnesota

www.childcareawaremn.org
888-291-9811

Duluth Poppins

61328 - 252nd Ave.
Mantorville, MN 55955
507-696-8452
www.duluthpoppins.com

Little Lambs Learning Center

802 Maple Grove Road
Duluth, MN 55811
218-591-5262 • 218-409-2188
www.duluth-lutheran.com

Mesabi Preschool Academy LLC

26 E. Superior St., Ste. 103
Duluth, MN 55802
218-576-7250
www.mesabipreschoolacademy.com

PUBLIC SCHOOLS

Duluth Public Schools (ISD #709)

215 N. First Ave. E.
Duluth, MN 55802
218-336-8700
Fax: 218-336-8773
www.isd709.org

Duluth Public Schools is committed to supporting every student, advancing equity and improving systems so every student, every day will be empowered with learning opportunities for growth, creativity and curiosity in preparation for their future in a global community. Duluth Public Schools provides an academically engaging, safe and inclusive environment.

Duluth Edison Charter Schools (DECS)

3301 Technology Drive
Duluth, MN 55811
218-728-9556
Fax: 218-728-2075
www.duluthedisoncharterschools.com

DECS is a K-8 public charter school dedicated to academic and personal excellence for every student. Our technology-rich environment includes a Chromebook for every student. Quality programs in language arts, math, science and social studies are enhanced with offerings of outdoor education, music, art, physical education and/or Spanish.

DECS North Star Academy

3301 Technology Drive
Duluth, MN 55811
218-728-9556



DECS Raleigh Academy

5905 Raleigh St.
Duluth, MN 55807
218-628-0697

DECS Business Services

1515 London Road, Ste. 2
Duluth, MN 55812
218-216-8989

Harbor City International School

332 W. Michigan St., Ste. 300
Duluth, MN 55802
218-722-7574
Fax: 218-625-6068
www.harborcityschool.org

Proctor Public Schools - ISD 704

131 Ninth Ave.
Proctor, MN 55810
218-628-4934 • Fax: 218-628-4937
www.proctor.k12.mn.us

Bay View Elementary School

8708 Vinland St.
Duluth, MN 55810
218-628-4949 • Fax: 218-628-4951

A.I. Jedlicka Middle School

131 Ninth Ave.
Proctor, MN 55810
218-628-4926 • Fax: 218-628-4931

Pike Lake Elementary School

5682 Martin Road
Duluth, MN 55811
218-729-8214 • Fax: 218-729-8215

Proctor High School

131 Ninth Ave.
Proctor, MN 55810
218-628-4926 • Fax: 218-628-4931

PRIVATE/INDEPENDENT**Marshall School**

1215 Rice Lake Road
Duluth, MN 55811
218-727-7266 • Fax: 218-727-1569
www.marshallschool.org

Marshall School is Duluth's independent school, serving students ages 4 through 12th grade with distinctive and personalized educational programming. The Forest School at Marshall serves early learners ages 4 through 4th grade in both an indoor and up to 60 percent outdoor classroom setting. Marshall's middle school program (grades 5-8) emphasizes developing each learner into a successful student and community member. The Upper School program at Marshall offers a personalized approach to learning, guiding each student to discover and develop their gifts and passions.

Spirit of the Lake Community School

5401 E. Superior St.
Duluth, MN 55804
218-721-4236
www.slcsduluth.org

Stella Maris Academy

2802 E. Fourth St.
Duluth, MN 55812
218-724-8565
www.stellamaris.academy

Stella Maris Academy -**Holy Rosary Campus**

2802 E. Fourth St.
Duluth, MN 55812
218-724-8565
www.stellamaris.academy/holy-rosary-campus

Stella Maris Academy -**St. James Campus**

715 N. 57th Ave. W.
Duluth, MN 55807
218-624-1511
www.stellamaris.academy/st-james-campus

Stella Maris Academy -**St. John's the Evangelist Campus**

1 W. Chisholm St.
Duluth, MN 55803
218-724-9392
www.stellamaris.academy/st-johns-campus

Summit School

1600 N. Eighth Ave. E.
Duluth, MN 55805
218-724-3133
www.summitschooltoday.com

(Continued on next page.)

Duluth Edison Charter Schools
Your K-8 Schools of Choice

Dedicated to academic and personal excellence for every student.

25TH YEAR PROVIDING QUALITY EDUCATION

**21st Century Learning
Reading and Math Excellence
Robust Specialist Program
270 acres of School Forest for Outdoor Learning
Integration of Play-Based Learning**

Experience our education advantages

**Learn more at
duluthedison.com**

RALEIGH ACADEMY
Grades K-5
5905 Raleigh Street
(218) 628-0607

NORTH STAR ACADEMY
Grades K-8
3301 Technology Drive
(218) 728 - 9556

COLLEGES & UNIVERSITIES

Fond du Lac Tribal & Community College

2101 - 14th St.
Cloquet, MN 55720
218-879-0800 • 800-657-3712
Fax: 218-879-0814
www.fdlcc.edu

Lake Superior College

2101 Trinity Road
Duluth, MN 55811
218-733-7601 • 800-432-2884
Fax: 218-733-5937
www.lsc.edu

Lake Superior College (LSC) is a comprehensive two-year community and technical college offering more than 90 programs, including liberal arts and science courses for transfer, technical and trades programs, allied health care and nursing programs, and continuing education and customized training for business and industry. LSC is a member of the Minnesota State system and is the largest two-year college in Northeastern Minnesota. LSC is also a leader in online courses and offers competitive DIII athletics. LSC was recently ranked as the top community college in the state and among the top 25 in the nation.

Northwood Technical College

600 N. 21st St.
715-394-6677
Fax: 715-394-3771
www.northwoodtech.edu



The College of St. Scholastica

1200 Kenwood Ave.
Duluth, MN 55811
218-723-6046 • 800-447-5444
Fax: 218-723-6290
www.css.edu

University of Minnesota Duluth - Chancellor's Office

1049 University Drive, 515 DADB
Duluth, MN 55812
218-726-7106
Fax: 218-726-6535
www.d.umn.edu

UMD is a comprehensive regional university offering 14 bachelor degrees in 85 majors and graduate programs in 27 different fields. In addition, UMD participates in four all-university PhD programs as well as an EdD Program. UMD consistently ranks among top Midwestern regional universities, providing a personalized learning experience on a mid-sized campus of a major university.

UMD Medical School – Duluth Campus

School of Medicine 113
1035 University Drive
Duluth, MN 55812
218-726-7571
Fax: 218-726-7383



University of Wisconsin-Superior

Belknap & Catlin - P.O. Box 2000
Superior, WI 54880
715-394-8213
www.uwsuper.edu

University of Wisconsin-Superior - Center for Continuing Education

Old Main 102 - P.O. Box 2000
Superior, WI 54880

Small Business Development Center at UW-Superior

Erlanson 108, Belknap & Catlin
Superior, WI 54880
715-394-8351 • Fax: 715-394-8180
www.uwsuper.edu/SBDC
www.wisconsinbdc.org





EXPLORE

YOUR *Independent* OPTION
Kindergarten - Grade 12

Marshall School

1215 Rice Lake Road | Duluth, MN 55811
www.marshallschool.org (218) 727-7266

Connect online! @marshallhilltoppers



FINANCIAL

BANKS, CREDIT UNIONS AND MORTGAGE BANKING

Well-known national banks, community banks, credit unions and mortgage banks are located conveniently throughout Duluth, easily allowing residents and local businesses to access their banking needs close to home. Duluth's financial institutions pride themselves on excellent customer service, along with providing customers with business-friendly banking hours and many online banking options.

A comprehensive menu of services is offered – from traditional bank products, commercial loans, home financing, checking accounts, competitive rates on savings and loans and 24-hour telephone and auto banking to many conveniently located ATMs. In addition, specialized options include business-to-business banking, insurance brokerage, investment and payment services products and more. ■



BANKS

Bell Bank

201 E. Superior St.
Duluth, MN 55802
218-673-5951
www.bell.bank

Bremer Bank

225 W. Superior St., Ste. 120
Duluth, MN 55802
218-221-7474
www.bremer.com

Bremer Bank offers banking, mortgage, investment, wealth management, trust and insurance. We're here to help you solve your toughest problems, seize your biggest opportunities and achieve success on your terms, now and in the future.

Frandsen Bank & Trust - Duluth

331 W. Superior St.
Duluth, MN 55802
218-673-5050

www.frandsenbank.com

Frandsen Bank & Trust is a community bank with offices in Minnesota, Wisconsin and North Dakota providing a wide array of banking products and services to its customers and communities. Deposit accounts, loans, online banking, bill pay, e-statements, cash management, credit and check cards, electronic payments and ATMs as well as trust (Wealth Management & Trust) and investment management (Frandsen Investment Services). All products and services are provided in a true community banking environment, where the customer is cared for in a way that nurtures a long-term relationship.

www.frandsenbank.com

National Bank of Commerce

1314 E. Superior St.
Duluth, MN 55805
218-730-0277 • Fax: 218-730-0280
www.nbcbanking.com

National Bank of Commerce - Downtown

306 W. Superior St.
Duluth, MN 55802
218-722-3445
www.nbcbanking.com

National Bank of Commerce - Hermantown

4105 Richard Ave.
Hermantown, MN 55811
218-727-7555
www.nbcbanking.com

(Continued on next page.)

- ✓ **Invest Wisely.**
- ✓ **Start with an Investment Review.**
- ✓ **Call Marline Wealth Management.**

Whether you are a seasoned investor or just starting your investments, Marline Wealth Management can provide you with a thorough review plus recommendations that help pursue your financial goals. We look forward to hearing from you.



Shaun Marline

shaun.marline@lpl.com

11 E. Superior St., Ste. 510 • Duluth, MN 55802
218-723-4108 • Toll Free: 866-598-9833

Securities offered through LPL Financial, Member FINRA/SIPC. Investment advice is offered through Independent Advisor Alliance, a registered investment advisor. Marline & Associates Wealth Management and Independent Advisor Alliance are separate entities from LPL Financial.

THERE'S MORE THAN WHAT MEETS THE EYE

at MPECU.



MPECU has been helping it's member/owners since 1933 achieve their financial goals with a full array of wealth management and commercial lending.

Let us help you bring your
dreams into better focus.



218.336.1800 www.mpecu.com

Federally Insured by NCUA, Equal Housing Lender, Membership Eligibility Required

North Shore Bank

131 W. Superior St.
Duluth, MN 55802
218-722-4784 • Fax: 218-722-7904
www.northshore.bank

Auto bank located at: 19 N. Second Ave. W.,
Duluth, MN 55802

North Shore Bank - Hermantown Branch

4810 Miller Trunk Highway
Hermantown, MN 55811
218-727-8563
www.northshore.bank

North Shore Bank - Lakeside Branch

4801 E. Superior St.
Duluth, MN 55804
218-525-1977
www.northshore.bank

North Shore Bank - Woodland Branch

17 E. Calvary Road
Duluth, MN 55803
218-728-4274
www.northshore.bank

Park State Bank - Central Avenue

331 N. Central Ave.
Duluth, MN 55807
218-624-3676 • Fax: 218-624-9066
www.parkstatebank.com

Park State Bank takes great pride in our exceptional, high-touch personalized service and commitment to the communities we serve. We are known for treating our clients well and ensuring we make our communities a better place. Our continued growth means more opportunities for our employees, clients and communities.

Park State Bank - Lincoln Park Branch

2630 W. Superior St., Ste. 2
Duluth, MN 55806
218-722-3500 • Fax: 218-727-8060
www.parkstatebank.com

Park State Bank - Miller Hill Branch

1600 Miller Trunk Highway
Duluth, MN 55811
218-722-5541
www.parkstatebank.com

Park State Bank - Mount Royal Branch

120 Mount Royal Shopping Circle
Duluth, MN 55803
218-728-1172
www.parkstatebank.com

US Bank - Cloquet Branch

715 Cloquet Ave.
Cloquet, MN 55720
218-878-7878 • Fax: 218-878-7888
www.usbank.com

US Bank - Duluth Downtown

130 W. Superior St.
Duluth, MN 55802
218-723-2800 • Fax: 218-723-2898
www.usbank.com

US Bank - Kenwood Branch

1337 W. Arrowhead Road
Duluth, MN 55811
218-720-1076 • Fax: 218-720-1075
www.usbank.com

US Bank - Lakeside Branch

4601 E. Superior St.
Duluth, MN 55804
218-720-1042 • Fax: 218-720-1034
www.usbank.com

US Bank - Miller Hill Branch

2400 Maple Grove Road
Duluth, MN 55811
218-723-2938 • Fax: 218-723-2923
www.usbank.com

US Bank - Spirit Valley Branch

5330 Grand Ave.
Duluth, MN 55807
218-720-1067 • Fax: 218-720-1061
www.usbank.com

Wells Fargo Bank

230 W. Superior St.
Duluth, MN 55802
218-723-2600 • Fax: 218-723-2710
www.wellsfargo.com

Wells Fargo Bank - Denfeld Branch

3931 W. Superior St.
Duluth, MN 55807
218-723-2694
www.wellsfargo.com

Wells Fargo Bank - Kenwood Branch

1339 W. Arrowhead Road
Duluth, MN 55811
218-726-9325
www.wellsfargo.com

Wells Fargo Bank - Miller Hill Branch

4180 Haines Road
Duluth, MN 55811
218-723-2790
www.wellsfargo.com

WesternBank

P.O. Box 16050
Duluth, MN 55816
218-723-1000 • Fax: 218-723-5101
www.wbduluth.com

Locally-owned Western Bank has been providing full service banking for over 100 years. We offer a full array of services and community banking services including business and consumer banking. Local loan origination and servicing is provided on all mortgages with expertise in conventional home loans, vacation properties and reverse mortgages.

WesternBank - Downtown Office

202 W. Superior St.
Duluth, MN 55802
218-723-1000
www.wbduluth.com

WesternBank - Freeway Office

201 N. Central Ave.
Duluth, MN 55807
218-723-1000
www.wbduluth.com

WesternBank - Hermantown Office

4120 Richard Ave., Ste. 100
Hermantown, MN 55811
218-723-1000
www.wbduluth.com

CREDIT UNIONS**Affinity Plus Federal Credit Union**

1820 Maple Grove Road
Duluth, MN 55811
218-722-4004 • Fax: 218-722-4447
www.affinityplus.org

Centricity Credit Union

2501 London Road
Duluth, MN 55812
218-729-7733 • 888-765-3683
Fax: 218-729-7978
www.centricity.org

Members Cooperative Credit Union - BlueStone Branch

952 Woodland Ave., Ste. 960
Duluth, MN 55812
218-625-8500
www.membersccu.org

Members Cooperative Credit Union - Miller Hill Branch

605 W. Central Entrance
Duluth, MN 55811
218-625-8500 • Fax: 218-625-3510
www.membersccu.org

(Continued on next page.)



NORTH SHORE BANK

CREATE THE LIFE *You* WANT

**NO MATTER WHERE YOU GO IN LIFE,
North Shore Bank is your partner through it all.**

- CDs & IRAs
- Mortgage Loans
- Retirement Solutions*
- Insurance Services*
- Personal & Home Equity Loans
- Investment Management Accounts*
- And, So Much More...

**We are here to help you create the life you want with
sound advice and guidance toward the best financial
products and services for you.**

*Investment and Insurance Products are not FDIC or government insured, not bank guaranteed, and may lose value.

PERSONAL BANKING | BUSINESS BANKING | MORTGAGE SERVICES | INSURANCE SERVICES
PRIVATE BANKING | INVESTMENTS & TRUST | RETIREMENT SOLUTIONS

Member **FDIC** 

    **NORTHSHORE.BANK** | 218.722.4784

Members Cooperative Credit Union -

Spirit Valley Branch

215 N. 40th Ave. W.
Duluth, MN 55807
218-625-8500 • Fax: 218-624-1571
www.membersccu.org

Minnesota Power Employees Credit Union

30 W. Superior St.
Duluth, MN 55802
218-336-1800 • 866-724-3993
Fax: 218-336-1839
www.mpecu.com
Since 1933, Minnesota Power Employees Credit Union has been serving the needs of our member/owners. With three convenient locations, a full line of services and a focus on financial education,

MPECU can help you with a wide array of financial needs. Visit us online at www.mpecu.com to get member information and service options.

North Shore Federal Credit Union

2104 London Road
Duluth, MN 55812
218-522-8310
www.northshorefcu.org

**North Shore Federal Credit Union -
Lincoln Park Branch**

1902 W. Superior St.
Duluth, MN 55806
218-522-8310
www.northshorefcu.org

North Star Credit Union

5721 Grand Ave.
Duluth, MN 55807
218-722-2720 • Fax: 218-727-3977
www.northstarcreditunion.org

Northern Communities Credit Union

3311 W. Arrowhead Road
Duluth, MN 55811
218-279-3200
www.nccyou.com

Share Advantage Credit Union

2502 Maple Grove Road
Duluth, MN 55811
218-722-5931
www.myshareadvantage.com

Superior Choice Credit Union

2817 Tower Ave.
Superior, WI 54880
715-392-5616 • 800-569-4167
Fax: 715-718-2939
www.superiorchoice.com

Whether you're looking to start or expand your business, Superior Choice Credit Union offers competitively-priced products and services, convenient online solutions and local decision making – so your business can thrive. Learn more at www.superiorchoice.com.

**Superior Choice Credit Union -
Denfeld Branch**

4125 Grand Ave.
Duluth, MN 55807
218-725-3611 • 800-569-4167
www.superiorchoice.com

FINANCING/LOANS

Bremer Bank

225 W. Superior St., Ste. 120
Duluth, MN 55802
218-221-7471
www.bremer.com

Harbor Pointe Credit Union

11 W. Second St.
Duluth, MN 55802
218-722-9242
www.hpcu.us

**Minnesota Business Finance Corporation
(MBFC)**

616 Roosevelt Road, Ste. 200
St. Cloud, MN 56301
800-593-0123 • 320-258-5000
Fax: 320-255-1815
www.mbfc.org

Minnesota Power Employees Credit Union

30 W. Superior St.
Duluth, MN 55802
218-336-1800 • 866-724-3993
Fax: 218-336-1839
www.mpecu.com

**National Bank of Commerce – Downtown
Duluth**

306 W. Superior St.
Duluth, MN 55802
218-722-3445
www.nbcbanking.com

MAKING CENTS

VIDEO SERIES

Now on
YouTube!

► Banking. Simplified.

Overwhelmed by banking acronyms? Unsure of the steps needed to take out a loan? Confused about different lending options?

We'll cover these topics and more in our video series, ***Making Cents.*** Our knowledgeable associates break down a variety of banking topics, offering viewers education and clarity. Each video will leave you feeling empowered to make smart financial decisions that fit your needs.



Scan the QR
code to watch.

 @nationalbankcommerce

National Bank
of Commerce



National Bank of Commerce

1314 E. Superior St.
Duluth, MN 55805
218-730-0277
www.nbcbanking.com

National Bank of Commerce - Hermantown

4105 Richard Ave.
Hermantown, MN 55811
218-727-7555
www.nbcbanking.com

Park State Bank – Central Avenue

331 N. Central Ave.
Duluth, MN 55807
218-624-3676 • Fax: 218-624-9066
www.parkstatebank.com

WBD Inc.

109 Myrtle St. E., Ste. 202
Stillwater, MN 55082
715-381-6719
www.wbd.org

WesternBank

P.O. Box 16050
Duluth, MN 55816
218-723-1000 • Fax: 218-723-5101
www.wbduluth.com

FINANCIAL - PLANNING/SERVICES**AdvisorNet Financial – Darin Hanson**

202 W. Superior St., Ste. 810
Duluth, MN 55802
218-727-6881 • Fax: 218-720-6856
www.advisornetduluth.com

AdvisorNet Financial – Scott Fisher

202 W. Superior St., Ste. 810
Duluth, MN 55802
218-727-6881 • Fax: 218-720-6856
www.advisornetduluth.com

Ascential Wealth Advisors

11 E. Superior St., Ste. 500
Duluth, MN 55802
218-336-2500 • 888-840-8299
www.ascentialwealth.com

Bremer Bank

225 W. Superior St., Ste. 120
Duluth, MN 55802
218-221-7471 • www.bremer.com

Edward Jones - Bob Farden & Lauren Farden

2200 London Road, Ste. 200
Duluth, MN 55812
218-724-3037 • 800-777-4501
Fax: 888-673-3170
www.edwardjones.com

Francisco & Associates

742 E. Superior St.
Duluth, MN 55802
218-722-0508 • Fax: 218-722-8360
www.pfaduluth.com

Headwaters Strategic Succession Consulting LLC - Professional Exit Plans for Private Business Owners

819 W. St. Germain St.
St. Cloud, MN 56303
651-333-2170
www.headwatersstrategic.com

Lake Superior Financial Services

11 E. Superior St., Ste. 544
Duluth, MN 55802
218-625-2430 • Fax: 218-625-2201
www.lakesuperiorfinancial.com

Liberty Wealth Management of Raymond James

2230 London Road
Duluth, MN 55812
218-722-9000
http://www.libertywealthmanagement.com

Marline & Associates Wealth Management

11 E. Superior St., Ste. 510
Duluth, MN 55802
218-723-4108 • 866-598-9833
Fax: 218-724-3349
www.marlinewealth.com

Merrill Lynch Wealth Management

130 W. Superior St., Ste. 800
Duluth, MN 55802
218-726-3140
www.local.ml.com/duluth.mn

Minnesota Power Employees Credit Union

30 W. Superior St.
Duluth, MN 55802
218-336-1800 • 866-724-3993
Fax: 218-336-1839
www.mpecu.com

Morgan Stanley

11 E. Superior St., Ste. 580
Duluth, MN 55802
218-720-0144
morganstanleyFA.com/Mark.R.Brown

MPPL Financial

309 W. Superior St.
Duluth, MN 55802
218-628-3135 • 800-236-MPPL
Fax: 218-628-3133
www.mpplfinancial.com

Neill Atkins Cetera Advisor Networks

4477 Lavaque Road
Duluth, MN 55811
218-727-4767
neillatkins.com

Northwestern Mutual

11 E. Superior St., Ste. 400
Duluth, MN 55802
218-623-6000 • Fax: 218-623-6007
www.duluth.nm.com

Panichi Blair Wealth Advisors

4140 Richard Ave., Ste. 600
Hermantown, MN 55811
218-213-9696
www.pbwadvisors.com

Raymond James & Associates

26 E. Superior St., Ste. 500
Duluth, MN 55802
218-279-3614 • 866-546-0050
Fax: 218-279-4015
www.raymondjames.com/duluth

RBC Wealth Management - Bubalo, Lawien and Meese Family Wealth Group

1420 London Road, Ste. 201
Duluth, MN 55805
218-728-8413 • Fax: 218-728-8410
www.rbcwmfa.com/bubalolawienfamilywealthgroup/index.htm

Signature Wealth Management – John Herron

4815 W. Arrowhead Road, Ste. 230
Duluth, MN 55811
218-525-9001 • Fax: 218-525-1211
www.signaturewealthmn.com

(Continued on next page.)

**YOUR NEIGHBOR,
YOUR PARTNER.**

 **SuperiorChoice**
Credit Union

**BUSINESS BANKING
FOR ALL NEEDS**

DULUTH | SUPERIOR

Federally insured by NCUA.

Symphonic Financial Advisors
5 N. Third Ave. W., Ste. 400
Duluth, MN 55802
218-625-1735 • Fax: 218-625-1736
www.symphonicfinancial.com

Thrivent Financial
2711 W. Superior St.
Duluth, MN 55802
208-539-4249
www.linkedin.com/in/kristyaltgathrivent

US Bank Wealth Management
130 W. Superior St., Ste. 300
Duluth, MN 55802
218-723-2952 • Fax: 218-723-2878
www.usbank.com

Wheeler Associates
324 W. Superior St., Ste. 1000
Duluth, MN 55802
218-722-8010 • Fax: 218-722-0945
www.wheeler-associates.com

MORTGAGES

Bremer Bank
225 W. Superior St., Ste. 120
Duluth, MN 55802
218-221-7471
www.bremer.com

Frandsen Bank & Trust - Duluth
331 W. Superior St.
Duluth, MN 55802
218-673-5050
www.frandsenbank.com

Minnesota Power Employees Credit Union
30 W. Superior St.
Duluth, MN 55802
218-336-1800 • 866-724-3993
Fax: 218-336-1839
www.mpecu.com

National Bank of Commerce - Downtown Duluth
306 W. Superior St.
Duluth, MN 55802
218-722-3445
www.nbcbanking.com

National Bank of Commerce
1314 E. Superior St.
Duluth, MN 55805
218-730-0277
www.nbcbanking.com

National Bank of Commerce - Hermantown
4105 Richard Ave.
Hermantown, MN 55811
218-727-7555
www.nbcbanking.com

North Shore Bank
131 W. Superior St.
Duluth, MN 55802
218-722-4784 • Fax: 218-722-7904
www.northshore.bank

North Shore Mortgage
131 W. Superior St.
Duluth, MN 55802
218-722-5966 • Fax: 218-722-5669
www.northshore.bank

Park State Bank - Central Avenue
331 North Central Ave.
Duluth, MN 55807
218-624-3676 • Fax: 218-624-9066
www.parkstatebank.com

Summit Mortgage Corporation
218-390-9559
www.summit-mortgage.com/loan-officer/gloria-allan

Superior Choice Credit Union
2817 Tower Ave.
Superior, WI 54880
715-392-5616 • 800-569-4167
Fax: 715-718-2939
www.superiorchoice.com

WesternBank
P.O. Box 16050
Duluth, MN 55816
218-723-1000 • Fax: 218-723-5101
www.wbduluth.com



YOUR COMMUNITY BANK

Park State Bank provides clients with the best of both worlds - the personalized customer service experience that community banks are known for, coupled with the financial stability and resources of a larger financial institution. Our Duluth Market team is committed to delivering exceptional business banking solutions tailored to your needs.



Bud Baker
President, Duluth/
North Shore Market
218-624-6206
NMLS #1805805



Bryan Lent
VP/Business Banking Officer
218-624-6214
NMLS #722932



John Bradshaw
SVP/Business Banking Officer
218-834-8649
NMLS #1810613



Kiera Wilson
VP/Business Banking/
North Shore Market Lead
218-834-8608
NMLS #440349



Elizabeth Hartman
Loan Portfolio Manager
218-624-6218



Jeanne Nolan
Loan Portfolio Manager
218-322-2817

PARKSTATEBANK.COM



Member FDIC



GOVERNMENT

LOCAL, STATE AND NATIONAL

Duluth governs with a strong mayor-council form of government. Policy proposals from the city administration are presented to a nine-member City Council for approval. Resolutions and ordinances become law when they are approved by the City Council and signed by the mayor. The mayor is elected for four-year terms. Four at-large councilors representing the City of Duluth as a whole and five councilors representing specific precincts are also elected to four-year terms. There are no term limits in Duluth. City Council meetings are held the second and fourth Mondays of each month at 7 p.m. in the Council Chamber at City Hall. You can visit www.duluthmn.gov/clerk/council/schedule.cfm or call 218-730-5740 for a complete schedule.

Duluth mayors appoint a city administrator, who leads the day-to-day operations of the city. For more information, visit the City of Duluth's website at www.duluthmn.gov. ■



(Continued on next page.)



City Hall • 411 W. First St. • Duluth, MN 55802
218-730-5500 • www.duluthmn.gov

OFFICE OF THE MAYOR

Mayor Roger Reinert

403 City Hall, 411 W. First St.
 218-730-5230
 Fax: 730-5904
reinert@duluthmn.gov

CHIEF ADMINISTRATIVE OFFICER

David Montgomery

402 City Hall, 411 W. First St.
 218-730-5370
dmontgomery@duluthmn.gov

CITY CLERK

Ian B. Johnson

330 City Hall, 411 W. First St.
 218-730-5500
ibjohnson@duluthmn.gov

CITY COUNCILORS

Wendy Durrwachter - 1st District

City Hall, Room 330
 411 W. First St.
 Duluth, MN 55802
 218-730-5700
wdurrwachter@duluthmn.gov

Mike Mayou - 2nd District

City Hall, Room 330
 411 W. First St.
 Duluth, MN 55802
 218-428-9195
 218-730-5355
mmayou@duluthmn.gov

Roz Randorf - 3rd District

Council President
 City Hall, Room 330
 411 W. First St.
 Duluth, MN 55802
 218-443-8364
www.duluthmn.gov

Tara Swenson - 4th District

City Hall, Room 330
 411 W. First St.
 Duluth, MN 55802
 218-730-5356
tswenson.duluthmn.gov

Janet Kennedy - 5th District

City Hall, Room 330
 411 W. First St.
 Duluth, MN 55802
 218-341-6113
jkennedy.duluthmn.gov

Arik Forsman - At Large

City Hall, Room 330
 411 W. First St.
 218-409-8822
aorsman.duluthmn.gov

Terese Tomanek - At Large

Council Vice President
 City Hall, Room 330
 411 W. First St.
 Duluth, MN 55802
 218-216-9126
ttomanek.duluthmn.gov

Azrin Awal - At Large

City Hall, Room 330
 411 W. First St.
 Duluth, MN 55802
 218-940-7701
 218-730-5359
aawal.duluthmn.gov

Lynn Marie Nephew - At Large

City Hall, Room 330
 411 W. First St.
 Duluth, MN 55802
 218-730-5354
lnephew.duluthmn.gov

ST. LOUIS COUNTY PUBLIC OFFICIALS

St. Louis County Courthouse

100 N. Fifth Ave. W.
Duluth, MN 55802
218-726-2000
www.stlouiscountymn.gov

County Administrator - Kevin Gray

St. Louis County Courthouse, Room 202
218-726-2448
grayk@stlouiscountymn.gov

County Attorney – Kimberly J. Maki

St. Louis County Courthouse, Room 501
218-726-2323
rubinm@stlouiscountymn.gov

County Auditor - Nancy Nilsen

St. Louis County Courthouse, Room 214
218-726-2380
nilsenn@stlouiscountymn.gov

St. Louis County Commissioners

Annie Harala - 1st District

100 N. 5th Ave. W., Room 202
Duluth, MN 55802
218-726-2450
haralaa@stlouiscountymn.gov

Patrick Boyle - 2nd District – Board Chair

100 N. 5th Ave. W., Room 202
Duluth, MN 55802
218-726-2359
boylep@stlouiscountymn.gov

Ashley Grimm - 3rd District

100 N. 5th Ave. W., Room 202
Duluth, MN 55802
218-726-2562
grimma@stlouiscountymn.gov

Paul McDonald - 4th District

St. Louis County Service Center
320 Miners Drive E.
Ely, MN 55731
218-365-8200
mcdonaldp@stlouiscountymn.gov

Keith Musolf - 5th District

100 N. 5th Ave. W., Room 202
Duluth, MN 55802
218-726-2450
musolfk@StLouisCountyMN.gov

Keith Nelson - 6th District – Board Vice Chair

Virginia Courthouse - 300 S. 5th Ave.
Virginia, MN 55792
218-749-7108
nelsonk@stlouiscountymn.gov

Mike Jugovich - 7th District

Hibbing Courthouse - 1810 12th Ave. E.
Hibbing, MN 55746
218-262-0201
jugovichm@stlouiscountymn.gov

STATE OF MINNESOTA

www.state.mn.us & www.leg.state.mn.us

Governor - Tim Walz

130 State Capitol
75 Rev. Dr. Martin Luther King Jr. Blvd.
St. Paul, MN 55155
651-201-3400 • 800-657-3717
www.governor.state.mn.us

Lieutenant Governor - Peggy Flanagan

130 State Capitol
75 Rev. Dr. Martin Luther King Jr. Blvd.
St. Paul, MN 55155
651-201-3400 • 800-657-3717

Attorney General - Keith Ellison

445 Minnesota St., Ste. 1400
St. Paul, MN 55101
651-296-3353 • 800-657-3787
attorney.general@ag.state.mn.us
www.ag.state.mn.us

Secretary of State - Steve Simon

180 State Office Bldg.
100 Rev. Dr. Martin Luther King Jr. Blvd.
St. Paul, MN 55155
Main Office 651-296-2803 • 877-551-6767
secretary.state@state.mn.us
www.sos.state.mn.us

State Auditor - Julie Blaha

525 Park St., Ste. 500
St. Paul, MN 55103
651-296-2551
state.auditor@osa.state.mn.us
www.auditor.state.mn.us

MINNESOTA STATE HOUSE OF REPRESENTATIVES

House Public Information Office
100 Rev. Dr. Martin Luther King Jr. Blvd., Ste. 175
St. Paul, MN 55155
651-296-2146 • 800-657-3550
www.house.leg.state.mn.us

Rep. Jennifer Schultz - District 7A

473 State Office Bldg.
100 Rev. Dr. Martin Luther King Jr. Blvd.
St. Paul, MN 55155
651-296-2228
rep.jennifer.schultz@house.mn

Rep. Liz Olson - District 7B

471 State Office Bldg.
St. Paul, MN 55155
651-296-4246
rep.liz.olson@house.mn

Rep. Roger Skraba - District 3A

221 State Office Bldg.
St. Paul, MN 55155
651-296-2190
rep.roger.skraba@house.mn

Rep. Natalie Zeleznikar - District 3B

223 State Office Bldg.
St. Paul, MN 55155
651-296-2676
rep.natalie.zeleznikar@house.mn

Rep. Ben Davis - District 6A

227 State Office Bldg.
St. Paul, MN 55155
651-296-0172
rep.ben.davis@house.mn

Rep. Josh Heintzman - District 6B

375 State Office Bldg.
St. Paul, MN 55155
651-296-4333
rep.joch.heintzman@house.mn

Rep. Jeff Dotseth - District 11A

343 State Office Bldg.
St. Paul, MN 55155
651-296-4308
rep.jeff.dotseth@house.mn

MINNESOTA STATE SENATE

Senate Information Office
75 Rev. Dr. Martin Luther King Jr. Blvd., Room 231
St. Paul, MN 55155
888-234-1112
www.senate.leg.state.mn.us

Sen. Jennifer McEwen - District 7

2417 Minnesota Senate Bldg.
St. Paul, MN 55155
651-296-4188
sen.jennifer.mcewen@senate.mn

Sen. Grant Hauschild - District 3

95 University Ave. W.
St. Paul, MN 55155
651-296-1789

Sen. Justin D. Eichorn - District 6 – Assistant Minority Leader

95 University Ave. W.
St. Paul, MN 55155
651-296-7079

Sen. Jason Rarick - District 11

3411 Minnesota Senate Bldg.
St. Paul, MN 55155
651-296-1508
sen.jason.rarick@senate.mn

UNITED STATES GOVERNMENT

www.senate.gov and www.house.gov

Sen. Amy Klobuchar

425 Dirksen Senate Bldg.
Washington, DC 20510
202-224-3244
www.klobuchar.senate.gov

Northeastern Office
Olcott Plaza, Room 105
820 Ninth St. N.
Virginia, MN 55792
Main line: 218-741-9690

Metro Office
1200 Washington Ave. S., Room 250
Minneapolis, MN 55415
612-727-5220

Southern Office
1130 1/2 Seventh St., NW, Room 212
Rochester, MN 55901
507-288-5321

Sen. Tina Smith

720 Hart Senate Office Bldg.
Washington, DC 20510
202-224-5641
www.smith.senate.gov

Duluth Office
515 W. First St., Ste. 104
Duluth, MN 55802
218-722-2390

Moorhead Office
819 Center Ave., Ste. 2A
Moorhead, MN 56560
218-284-8721

Rochester Office
1202-1/2 Seventh St. NW, Ste. 218
Rochester, MN 55901
507-288-2003

St. Paul Office
60 Plato Blvd. E., Ste. 220
St. Paul, MN 55107
651-221-1016

Rep. Pete Stauber

Congressional District 8
461 Cannon HOB
Washington, DC 20515
202-225-6211
www.stauber.house.gov

Brainerd Office
Brainerd City Hall
501 Laurel St.
Brainerd, MN 56401
218-355-0862

Chisholm Office
Chisholm City Hall
316 W. Lake St., Room 7
Chisholm, MN 55719
218-355-0240

Cambridge
Cambridge City Hall
300 Third Ave. NE
Cambridge, MN 55008
763-310-6208

Hermantown Office
5094 Miller Trunk Highway,
Ste. 900
Hermantown, MN 55811
218-481-6396



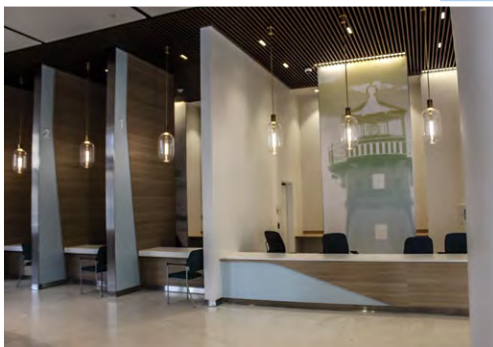
HEALTH CARE

HOSPITALS, CLINICS, ASSISTED & INDEPENDENT SENIOR LIVING, CLINICS, NURSING HOMES

Residents of Duluth and our region have outstanding, award-winning care within their reach. The excellent reputation of Duluth's health-care industry attracts patients from far beyond the Twin Ports region, including other areas of Minnesota, Michigan's Upper Peninsula and Canada. Patients can choose from two world-class health-care systems and numerous smaller, privately owned facilities.

Many senior care, assisted living and nursing home options are also available in Duluth. In fact, CNN ranked Duluth among its "25 Best Places to Retire" list. State-of-the-art medical and rehabilitative facilities, comfortable living arrangements and creative social activities are among the assets provided at Duluth's eldercare centers.

In addition to providing outstanding care, the area's health-care sector provides jobs and serves as a strong economic driver, totaling approximately 28 percent of the regional economy. Furthermore, local universities – including the University of Minnesota Medical School-Duluth Campus, The College of St. Scholastica, Lake Superior College and Northwood Technical College – draw an abundance of medical students from around the nation and world, invigorating the Duluth economy with a fresh, new source of talent. ■



HOSPITALS, CLINICS AND PHYSICIANS

ESSENTIA HEALTH

502 E. Second St.
Duluth, MN 55805
218-786-8376
Fax: 218-720-2470
www.essentiahealth.org

Essentia Health is an integrated health system, headquartered in Duluth, that serves patients in Minnesota as well as Wisconsin, Idaho and North Dakota. It combines the strengths of 14,500 employees, including 2,100 physicians and advanced practitioners, who serve our patients and communities through the mission of being called to make a healthy difference in people's lives.

Essentia Health has 15 hospitals, 77 clinics, six long-term care facilities, three assisted living facilities, three independent living facilities, five ambulance services and one research institute. As the largest, most comprehensive health care provider in the Northland, Essentia Health delivers patient- and family-centered care and leading-edge treatments, technologies and research. It is accredited as an Accountable Care Organization by the National Committee for Quality Assurance.

Downtown Duluth Campus:

Essentia Health - St. Mary's Medical Center
402 E. Second St.
218-786-4000

Essentia Health - St. Mary's Children's Hospital
402 E. Second St.
218-786-4000

Essentia Health - Miller-Dwan Bldg.
502 E. Second St.
218-727-8762

Essentia Health Duluth Clinic
(First, Second & Third St. Buildings)
420 E. First St.
502 E. Second St.
400 E. Third St.
218-786-8364

Essentia Health - Miller Hill Health Plaza
1600 Miller Trunk Highway (Bldg. C)

Facilities at Miller Hill Health Plaza:

Center for Personal Fitness
218-786-5400
Polinsky Medical Rehabilitation Center
218-786-5360
Therapy & Performance Center
218-786-5410

NEIGHBORHOOD LOCATIONS:

Essentia Health - Hermantown Clinic
4855 W. Arrowhead Road
218-786-3540

Essentia Health - Lakeside Clinic
4621 E. Superior St.
218-786-3550

Essentia Health - Lakewalk Clinic
1502 London Road
218-576-0100

Essentia Health - Proctor Clinic
211 S. Boundary Ave.
218-624-4819

Essentia Wellness Center
4289 Ugstad Road (Hermantown)
218-786-3100

Essentia Health - West Duluth Clinic
4212 Grand Ave.
218-786-3500

URGENT CARE SITES:

Essentia Health Orthopedic Urgent Care - Duluth
1301 Miller Trunk Highway
218-576-0680

Essentia Health Urgent Care - Duluth
400 E. Third St., Duluth
218-786-8490

Essentia Health Urgent Care - West Duluth
4212 Grand Ave.
218-786-3336

SUPERIOR, WISCONSIN LOCATIONS:

Essentia Health
St. Mary's Hospital - Superior
3500 Tower Ave.
715-817-7000

Essentia Health
St. Mary's - Superior Clinic
3500 Tower Ave.
715-817-7100

Essentia Health
Convenient Care - Superior
2202 E. Second St., Ste. 377
715-817-7990

ST. LUKE'S

915 E. First St.
Duluth, MN 55805
218-249-5555 • Fax 218-249-3090
www.slhduluth.com

St. Luke's, a comprehensive regional health care system, offers a continuum of care serving the 17-county region of Northeastern Minnesota, Northwestern Wisconsin and the Upper Peninsula of Michigan. The system includes St. Luke's Hospital in Duluth, Lake View Hospital and Clinic in Two Harbors, and 14 primary and 25 specialty clinics. Primary care clinics are located in Duluth, Hermantown, Hibbing, Two Harbors, Mountain Iron and Silver Bay, Minnesota, and Ashland and Superior, Wisconsin. In addition, Urgent Care, Q Care and eCare express medical services are available. St. Luke's is designated by the American College of Surgeons and the State of Minnesota Department of Health as a Level II trauma center.

St. Luke's Hospital
915 E. First St.
Duluth, MN
218-249-5555

St. Luke's Birthing Center
915 E. First St.
Duluth, MN 55805
218-249-5605 • Fax: 218-249-5695

Lake View Hospital
325 11th Ave.
Two Harbors, MN 55616
218-834-7300 • Fax 218-834-7388

ST. LUKE'S FAMILY MEDICINE CLINICS:

Denfeld Medical Clinic
4702 Grand Ave.
Duluth, MN 55807
218-249-6800

Lake View Medical Clinic
1010 Fourth St.
Two Harbors, MN 55616
218-834-7700

Lester River Medical Clinic
6351 E. Superior St.
Duluth, MN 55804
218-249-4500

Mariner Medical Clinic
109 N. 28th St.
Superior, WI 54880
715-395-3900

Miller Creek Medical Clinic
4190 Loberg Ave.
Hermantown, MN 55811
218-249-4600

Mount Royal Medical Clinic
1400 Woodland Ave.
Duluth, MN 55803
218-249-8800





P.S. Rudie Medical Clinic
26 E. Superior St., Ste. 205
Duluth, MN 55802
218-249-4300

QCare - Cub
619 W. Central Entrance
Duluth, MN
218-249-4987

Piedmont Medical Clinic
Lake Superior College
2101 Trinity Road, Ste. L110
Duluth, MN
218-249-7520

St. Luke's Internal Medicine Associates
1001 E. Superior St., Ste. 401
Duluth, MN 55802
218-249-7960

URGENT CARE SITES:

St. Luke's Hospital
915 E. First St.
Duluth, MN
218-249-6095

Denfeld Medical Clinic
4702 Grand Ave.
Duluth, MN
218-249-6800

Lake View Urgent Care
325 11th Ave.
Two Harbors, MN
218-834-7733

Miller Creek Medical Clinic & Urgent Care
4190 Loberg Ave.
Hermantown, MN 55811
218-249-4600



The Latest and Greatest Technology in the Hands of Exceptional Surgeons.

It's Your Health, It's Your Choice.



Lakewalk
SURGERY CENTER

Lakewalk.com

(Continued on next page.)

ASSISTED LIVING

Diamond Willow Assisted Living
6353 E. Superior St.
Duluth, MN 55804
218-348-3432
www.diamondwillow.com

Elysian Senior Homes of Duluth
110 Coffee Creek Blvd.
Duluth, MN 55811
218-464-9400
www.elysianofduluth.com

Keystone Bluffs Assisted Living
2528 Trinity Road
Duluth, MN 5581
218-727-2800
www.keystonebluffs.com

Lifestone Health Care Inc.
319 Seventh St.
Proctor, MN 55810
218-481-7306
www.lifestonehealthcare.com

Open Arms Senior Living
4414 Martin Road
Duluth, MN 55803
218-576-5664
www.openarmsseniorliving.com

The Pillars of Hermantown
4110 Lavaque Road
Hermantown, MN 55811
218-600-5755
www.pillarsseniorliving.com

St. Ann's Residence
330 E. 3rd Street
Duluth, MN 55805
218-727-8831
www.stanns.com

BEHAVIORAL/MENTAL HEALTH

Human Development Center
1401 E. First St.
Duluth, MN 55805
218-728-4491
www.humandevelopmentcenter.org

Lakeview Behavioral Health
600 E. Superior St., Suite 502
Duluth, MN 55802
218-327-2001
www.lakeviewbh.com

North Homes Children & Family Services
324 W Superior St., Suite 150
Duluth, MN 55802
218-733-3000
www.northhomes.org

Two Rivers Counseling
404 W. Superior St., Suite 210
Duluth, MN 55802
218-606-1100
www.tworiverscounselingduluth.com

BLOOD CENTERS

Memorial Blood Centers
5115 Burning Tree Road, Ste. 300
Duluth, MN 55811
218-723-8080
www.mbc.org

CSL Plasma
106 West Superior St.
Duluth, MN 55802
218-727-8139
www.csplasma.com

DRUG ABUSE TREATMENT

Minnesota Adult & Teen Challenge
2 East Second St.
Duluth, MN 55802 | View on Google Maps
218-529-3733
www.mntc.org

HEALTH CARE & WELLNESS SERVICES

Alzheimer's Association MN-ND-Northern Regional Center
4960 Miller Trunk Highway, Ste. 700
Hermantown, MN 55811
218-733-2560 • 800-272-3900 (Help Line)
Fax: 218-733-2565
www.alz.org/mnnd

Arrowhead EMS Association
4219 Enterprise Circle
Duluth, MN 55811
218-726-0070 • (800) 247-1283
www.arrowheadems.com

Associated Chiropractic Physicians
1320 Kenwood Ave.
Duluth, MN 55811
218-728-3686 • Fax: 218-728-2996
www.duluthchiro.com
Our mission at Associated Chiropractic is to improve the overall health of Northland residents by providing the highest quality family chiropractic wellness care possible. We do this by empowering individuals and families to take control of their own health and wellness. We educate, lead and inspire with open ears, boundless energy and a positive attitude. Our friendly staff and state-of-the-art diagnostic equipment ensure you will receive the highest quality health care possible. Work comp and auto injuries are welcome. Most insurance accepted.

Essentia Health – Duluth
402 E. Second St.
Duluth, MN 55805
844-663-1068
www.essentialhealth.org

Expanding Horizons Inc.
5075 Miller Trunk Highway
Duluth, MN 55811
218-626-1926
www.expandinghorizonshomes.com

Northern Orthotic and Prosthetic Center
925 E. Superior St., Ste. 102
Duluth, MN 55802
218-249-6250 • 866-710-6017
www.northernoandp.com

Peace of Mind of Duluth, Inc.
1731 London Road
Duluth, MN 55812
218-576-7363
www.pomduluth.com

Prime IV Hydration and Wellness
5115 Burning Tree Road, Suite 302
Duluth, MN 55811
218-722-0719
www.primeivhydration.com

UnitedHealthcare/Optum
4316 Rice Lake Road
Duluth, MN 55811
218-279-6756
www.unitedhealthgroup.com

The Wellness Bar
4891 Miller Trunk Hwy
Hermantown, MN 55811
715-869-5379
www.thewellnessbar.org

HOME CARE SERVICES

St. Luke's Home Care Services
(St. Luke's Hillside Center)
220 North 6th Avenue East
Duluth, MN 55805
218.249.6111
www.slhduluth.com/locations/st-lukes-home-care-services

Lake Superior Community Health Center
4325 Grand Ave.
Duluth, MN 55807
218-722-1497 • 715-392-1955
Fax: 218-722-6239
www.lschc.org

NURSING HOMES & REHABILITATIVE SERVICES

Bayshore Residence & Rehabilitation
1601 St. Louis Ave.
Duluth, MN 55802
218-727-8651 • 218-740-4036
Fax: 218-727-1761
www.bayshorecarecenter.com

Benedictine Living Community of Duluth
935 Kenwood Ave.
Duluth, MN 55811
218-522-8900 • Fax: 218-723-6449
www.blcduluth.org

Hilltop Healthcare Rehabilitation & Skilled Nursing
2501 Rice Lake Road
Duluth, MN 55811
218-625-6400
www.hilltophc.com

Viewcrest Health Center
3111 Church Place
Duluth, MN 55811
218-727-8801
www.vhc.sfhs.org

Villa Marina Health and Rehabilitation Center
35 N. 28th St.
Superior, WI 54880
715-392-3300
www.avantihs.com

PHYSICAL THERAPY & REHABILITATION

In Motion Therapy

2701 W. Superior St., Ste. 112
Duluth, MN 55806
218-727-1180
www.inmotiontherapy.com

Orthopaedic Associates of Duluth, P.A.

1000 E. First St., Ste. 400
Duluth, MN 55805
218-722-5513 • 800-225-1321
www.oادلuth.com

St. Luke's

915 E. First St.
Duluth, MN 55805
218-249-5555 • Fax: 218-249-3090
www.slhduluth.com

PHYSICIANS AND SURGEONS

Essentia Health – Duluth

402 E. Second St.
Duluth, MN 55805
844-663-1068
www.essentialhealth.org

Northland Plastic Surgery PA

1420 London Road, Ste. 101
Duluth, MN 55805
218-724-7363 • Fax: 218-724-6199
www.northlandplasticsurgery.com

Orthopaedic Associates of Duluth PA

1000 E. First St., Ste. 400
Duluth, MN 55805
218-722-5513 • 800-225-1321
www.oادلuth.com



Plastic Surgery Center of Duluth

324 W. Superior St., Ste. 100
Duluth, MN 55802
218-215-8990
www.duluthplasticsurgerycenter.com

Relf EyeCare Specialists PA

4413 Airbase Road
Hermantown, MN 55811
218-720-3553
www.relfeyecare.com

St. Luke's

0915 E. First St.
Duluth, MN 55805
218-249-5555 • Fax: 218-249-3090
www.slhduluth.com

SURGERY CENTERS

Arrowhead Surgery Center

4316 Rice Lake Rd, Suite 104
Duluth, MN 55811
218-514-0514
www.ascduluth.com

Lakewalk Surgery Center

420 London Road, Ste. 100
Duluth, MN 55805
218-728-0650 • 877-728-0650
www.lakewalk.com

St. Luke's

0915 E. First St.
Duluth, MN 55805
218-249-5555 • Fax: 218-249-3090
www.slhduluth.com

MEDICA HEALTH PLANS FEATURING ESSENTIA HEALTH



**Health plans at a price you can afford.
Services you can count on.
Features you'll love.**

Call your broker or a Medica Representative
at **1-833-424-4752** or visit **Medica.com**



Essentia Health



MILITARY

NATIONAL GUARD, NAVY, COAST GUARD AND RECRUITING

Duluth strongly supports the region's military members and their families. The city has officially been proclaimed as a Yellow Ribbon City by Minnesota's governor in conjunction with the Minnesota National Guard's Beyond the Yellow Ribbon program. From the Minnesota Army National Guard and Minnesota Air National Guard to the United States Coast Guard, each local military unit contributes to the strength of Duluth through the jobs provided and the overall economic impact delivered.

The 148th Fighter Wing, one of the largest employers in the area, supplies more than 1,000 jobs and generates a yearly economic impact of more than \$100 million. The 148th succeeded in becoming one of only six active associate units in the country. The designation means bringing active-duty Air Force personnel to Duluth to work with and train current guard members. Accomplished through a sustained, cooperative effort, active association status provides a boost to the local economy and greater long-term stability to the base.

The 148th Fighter Wing has a strong record and long list of accomplishments. Notable accomplishments in recent years include receiving the Raytheon Trophy, which is given to the best fighter units in the U.S. Air Force; the Air Force Outstanding Unit Award; Air Force Association Outstanding Air National Guard Flying Unit Award; and the Nathan Altschuler Outstanding Education and Training Program Award.

Additionally, the United States Coast Guard employs more than 130 people in the Duluth/Superior region and the Army National Guard is responsible for roughly \$21 million in both salaries (state and federal) and other expenses. Together, the local military strengthens Duluth's economy. By proudly serving their country, they're proudly serving us. ■



Minnesota Army National Guard

1-94th Cavalry Squadron
4015 Airpark Blvd.
Duluth, MN 55811
Unit telephone: 651-268-8243
or 218-723-4756
www.minnesotanationalguard.org

Minnesota Air National Guard

148th Fighter Wing
4680 Viper St.
Duluth, MN 55811
218-788-7258
www.148fw.ang.af.mil

The 148th Fighter Wing – the Duluth based Air National Guard unit – flies the Block 50 F-16CM, the newest F-16 in the Air Force fleet. The Wing performs Aerospace Control Alert, protecting America's skies 24 hours a day. The 148th is one of two Air National Guard wings tasked to provide Suppression of Enemy Air Defense (SEAD) support for our nation.

The 148th mission is to “provide ready Airmen to defeat America's enemies and rapidly respond to state and community needs.” When Minnesota Air National Guard units are not mobilized or under federal control, they report to the governor, supervised by the adju-

tant general. The dual federal-state mission is unique in the military and sets the National Guard apart from any other reserve component.

In addition to being available when our state and nation needs it, the 148th provides the Airfield Fire Department, the sole crash and rescue service provider for the Duluth International Airport, providing 24/7 coverage.

United States Coast Guard (USCG)

600 S. Lake Ave.
Duluth, MN 55802
218-720-5286
www.uscg.mil/d9/msoduluth

USCG Station Duluth

218-720-5412
Search and Rescue • Law Enforcement

USCG Marine Safety Unit Duluth

218-522-0707 • 218-720-5286
Commercial Shipping
Oil Spills/HAZMAT

U.S. Air Force Recruiting

4970 Airport Road, Ste. 206
Duluth MN 55811
218-788-7211

U.S. Army Recruiting

2330 Mountain Shadow Drive
Duluth MN 55811
218-722-7832

U.S. Marine Corps Recruiting

2330 Mountain Shadow Drive
Duluth MN 55811
218-727-2159

U.S. Navy Recruiting

2330 Mountain Shadow Drive
Duluth MN 55811
218-722-4296



TOURISM/ARTS

PLACES TO GO, THINGS TO DO, ATTRACTIONS AND EVENTS

Residents know what makes Duluth special, and so do the more than a million people who visit annually. Tourism is one of the city's largest industries, creating more than \$950 million in annual direct economic impact. The past two decades represent an era of phenomenal growth and success in local tourism.

Duluth boasts a vibrant arts culture and is home to art museums, performance centers, community and college theater productions and numerous festivals throughout the year. The Marine Museum, Glensheen Mansion and the Great Lakes Aquarium are some of the most visited attractions in Minnesota. The Duluth Entertainment Convention Center (DECC) remains the area's top entertainment site, bringing in diverse talent and drawing thousands of annual visitors to venues such as AMSOIL Arena and Bayfront Festival Park. And the historic NorShor Theatre has been transformed and reopened, thanks to a \$30.5 million renovation.

Many people also enjoy the abundant outdoor recreational opportunities – special parks, trails and Northern Minnesota's spectacular wilderness – all year round. Duluth welcomes visitors from all over the world as they trek north to the scenic North Shore of Lake Superior to view vibrant autumn colors, pristine, snow-covered forests, a profusion of wildflowers in spring and the sparkling Lake Superior shoreline in summer.

Canal Park and its picturesque Lakewalk along the western shore of Lake Superior is a perfect destination for fresh air and great shopping. In winter, residents and visitors alike keep warm with a range of winter activities including skiing, snowboarding, skating, hockey, snowshoeing, fat biking and ice fishing. ■

(Continued on next page.)



Visit Duluth provides convention, event and sport sales as well as visitor center services:
www.visitduluth.com - 218-722-4011 -
cvb@visitduluth.com.



Photo courtesy of Glensheen

TOURISM/ATTRACTIONS/ MUSEUMS

Bentleyville Tour of Lights

4313 Haines Road
Duluth, MN 55811
218-740-3536
www.bentleyvilleusa.org

Duluth Children's Museum

2125 W. Superior St.
218-733-7543
www.playduluth.com

Duluth Ghost Tours

702-767-8429
www.duluthghosttours.com

Glensheen-UMD (Historic Congdon Estate)

3300 London Road
218-726-8910
Toll free 888-454-4536
www.glensheen.org

Great Lakes Aquarium

353 Harbor Drive
218-740-3474
www.glaquarium.org

Lake Superior Maritime Visitor Center

600 Lake Ave.
(next to the Aerial Lift Bridge)
218-720-5260
24-hour Boatwatcher's Hotline:
218-722-6489
www.lsmma.com

Lake Superior Railroad Museum

506 W. Michigan St.
(St. Louis County Depot)
Duluth, MN 55802
218-727-8025
www.lsrn.org

Lake Superior Zoological Society

7210 Fremont St.
218-730-4500
www.lszoooduluth.org

North Shore Scenic Railroad

506 W. Michigan St.
(St. Louis County Depot)
218-722-1273 • 800-423-1273
www.duluthtrains.com

Richard I. Bong Veterans Historical Center

305 Harbor View Parkway
(Superior, Wis.)
715-392-7151
www.bongcenter.org

St. Louis County Historical Society

506 W. Michigan St.
(St. Louis County Depot)
218-733-7586 • 218-733-7580
www.thehistorypeople.org

Visit Duluth

230 W. Superior St., Ste. 150
Duluth, MN 55802
218-722-4011
Fax: 218-722-1322
www.visitduluth.com

EVENTS

Bentleyville® Tour of Lights

(annual holiday lights display
at Bayfront Festival Park)
218-740-3535 - office
www.bentleyvilleusa.org

Duluth Air and Aviation Expo

The U.S. Air Force
Thunderbirds headline the May
19-20, 2024 event.
218-628-9996 – general inquiries
www.duluthairshow.com

Grandma's Marathon

The 2024 marathon will be
held June 22.
218-727-0947
www.grandmasmarathon.com

Homegrown Music Festival

The 2024 festival will be held
April 28 - May 5.
www.duluthhomegrown.org

Kraus-Anderson Bike Duluth Festival

The 2022 festival will be held
July 19 - 21 at Spirit Mountain.
www.bikeduluthfestival.com

Ragnar Relay

The 2024 relay from
Minneapolis to Duluth will be
held Aug. 9-10.
www.runragnar.com

LANDMARKS/PARKS

Aerial Lift Bridge

601 S. Lake Ave.

Bayfront Festival Park

350 Harbor Drive,
Located on the Lake Superior
waterfront.
218-722-5573
www.bayfrontfestivalpark.com

Brighton Beach in Kitchi Gammi Park

Located on the far east end of
Duluth along North Shore
Scenic Highway 61.

Canal Park

www.canalparkduluth.com
The Canal Park area features
restaurants, shops, the Lakewalk
and the Aerial Lift Bridge.

Clayton Jackson McGhie Memorial

Located at the Intersection of
East First Street and North
Second Avenue East.
218-336-2990
www.claytonjacksonmcghie.org

Enger Tower

Located at the intersection of
Skyline Parkway and 16th Ave.
West near Enger Park Golf
Course.

Gary-New Duluth Veterans Memorial

Located at the corner of Stowe
Street and Commonwealth
Avenue.
gndveteransmemorial.org

Lakewalk Trail

Starting in Canal Park, the
Lakewalk along the westerly
shoreline of Lake Superior
stretches from Canal Park
Museum to Brighton Beach. An
underground tunnel connects
the Lakewalk to Brighton
Beach.

Leif Erikson Park

Located along the Lake
Superior waterfront at 1301
London Road.

North Shore Scenic Drive

The North Shore Scenic Drive
runs 22 miles, starting near
Brighton Beach on Highway 61
and continuing to Two Harbors,
Minnesota.
www.lakesuperiordrive.com

Park Point (Minnesota Point)

Located at the end of Minnesota
Avenue, Park Point's sandy
beaches stretch for seven
miles.

Rose Garden

Located on the Lake Superior
waterfront at 15 S. 13th Ave. E.,
Duluth's Rose Garden is a 4.5
acre portion of Leif Erikson
Park and is accessible from the
Lakewalk.

Seven Bridges Road

Seven Bridges Road travels up
Occidental Boulevard from
Superior Street and across
Hawk Ridge to Glenwood
Avenue and serves as the
eastern terminus to Skyline
Parkway, Duluth's famous
hilltop boulevard.

Skyline Parkway

Duluth's 125-year-old historic
parkway offers superb views of
Lake Superior, the harbor and
the Twin Ports and stretches
about 30 miles at 600 feet
above the shoreline.



Split Rock Lighthouse

3713 Split Rock Lighthouse Road
(45 miles north of Duluth on Highway 61)
218-226-6372
www.splitrocklighthouse.org

Superior Hiking Trail

www.shta.org
The Superior Hiking Trail includes a 39-mile trail section through Duluth, featuring segments through Jay Cooke State Park, Ely's Peak, Bardon's Peak, the Magney-Snively old growth forest, Spirit Mountain, Enger Park, the Lakewalk, University of Minnesota Duluth's Bagley nature trails and Hartley Park.

Western Waterfront Trail

A 3.5-mile trail along the St. Louis River that is ideal for hiking, jogging, biking, snowshoeing and sightseeing. Located at Grand Avenue at 72nd Avenue West across from the Lake Superior Zoo.

Willard Munger State Trail

The Munger Trail is open for easy bike riding and inline skating in the summer, as well as snowmobiling in the winter. With 14 miles linking West Duluth and Jay Cooke State Park, the trail begins adjacent to Indian Point Park (Grand Avenue at 75th Avenue West).

PERFORMANCE/THEATRE/ MUSIC

The Duluth Playhouse

211 E. Superior St.
218-733-7555
www.duluthplayhouse.org

Duluth Superior Symphony Orchestra

130 W. Superior St., Ste. LL2-120
218-623-3776
www.dsso.com

Minnesota Ballet

505 W. Michigan St.
Duluth, MN 55802
218-733-7570
www.minnesotaballet.org

NorShor Theatre

211 E. Superior St.
218-733-7555
www.norshortheatre.com



Movies in the Park

Sponsored by the Greater Downtown Council, this free, family-friendly outdoor movie event is held in summer months at Leif Erikson Park. Visit www.downtownduluth.com for movie dates.

Zeitgeist Arts

222 E. Superior St., Ste. 326
218-726-5430
www.zeitgeistarts.com

RECREATION/SPORTS

Chester Bowl Improvement Club

1801 E. Skyline Parkway
Duluth, MN 55812
218-724-9832
www.chesterbowl.org

COGGS –

Cyclists of Gitchee Gumee
P.O. Box 161261
Duluth, MN 55815
920-246-4920
www.coggs.com

Duluth Huskies Baseball Club

Wade Stadium
101 N. 35th Ave. W.
218-786-9909
www.duluthhuskies.com

Essentia Health Duluth Heritage Sports Center

120 S. 30th Ave. W.
218-464-1711
Duluth, MN 55806
www.duluthheritage.com

GOLF

Challenging golf and spectacular scenery lure golfers to Duluth's public and private golf courses.

Private Clubs:

Ridgeview Country Club

218-728-5128
700 W. Redwing St.
www.ridgeviewcountryclub.com

Northland Country Club

218-525-1941
3901 E. Superior St.
www.northlandcountryclub.com

Pike Lake Golf Course

218-590-3325
4895 Midway Road

Public Courses:

Enger Park

218-723-3451
1801 W. Skyline Parkway
www.golfduluth.com

Grandview

218-628-3727
5665 Grandview Road
www.grandviewgolfinks.com

Nemadji Golf Course

715-394-0266
5 N. 58th St.
(Superior, Wis.)
www.nemadjigolf.com



Spirit Mountain Recreation Area

9500 Spirit Mountain Place
218-628-2891 • 800-642-6377
www.spiritmt.com

ART GALLERIES

Duluth Pottery LLC

1924 W. Superior St.
218-606-1120
www.duluthpottery.com

Frame Corner Gallery

323 W. Superior St.
218-722-7174 • 877-828-9278
www.framecornergallery.com

Joseph Nease Gallery

23 W. First St.
218-481-7750
www.josephneasegallery.com



Silviis of Sivertson Gallery

361 Canal Park Drive
218-723-7877
www.sivertson.com

CASINOS

Fortune Bay Resort Casino

1430 Bois Forte Road, Tower
800-555-1714 • 218-753-7859
www.fortunebay.com



DULUTH
AREA CHAMBER OF
COMMERCE





CONFERENCE CENTERS

CONFERENCE CENTERS AND MEETING SERVICES

Duluth has long been a premier gathering place for a very good reason – the number and scope of spaces available for any kind or size of event.

It all begins with the Duluth Entertainment Convention Center, or DECC, the premier destination gathering place in the Northland since 1966. The multi-purpose center has been home to the University of Minnesota Duluth Bulldogs from the start, and the Duluth Curling Club since 1968 when Pioneer Hall was built. The Duluth Superior Symphony Orchestra also calls the DECC home for its performances.

In 2010 another large and historic event center opened, the Clyde Event Center at the former Clyde Iron Works, with a venue that can accommodate up to 1,200 people.

For more intimate events and business meetings, there are a host of options that include full-service conference and party rooms at area hotels such 14 flexible meeting rooms at the Holiday Inn & Suites to Pier B Resort with three meeting spaces, including the Rooftop Harborside Deck, which can accommodate 150 people and gives the most amazing view of Duluth's working harbor. ■



Aad Shrine

5152 Miller Trunk Highway
Hermantown, MN 55811
218-722-7488
www.aadshrineevents.com

Black Woods Event Center

195 Highway 2
Proctor, MN 55810
218-624-3454
www.blackwoodseventcenter.com

Canal Park Lodge

250 Canal Park Drive
Duluth, MN 55802
218-279-6000 • 800-777-8560
Fax: 218-279-4055
info@canalparklodge.com
www.canalparklodge.com

This lakeshore property has 116 well-appointed rooms – all featuring refrigerators, microwaves and free high-speed internet access. Enjoy the beautiful view from one of our lakeside balcony rooms or lounge in one of our spacious hot tub suites. Start your day off with a hot breakfast featuring scrambled eggs, hot meat item and Belgian waffles.

Clyde Event Center and Malting Building

2920 W. Michigan St.
Duluth, MN 55806
218-727-1150
clydeironworks.com

Comfort Inn - West

3900 W. Superior St.
Duluth, MN 55807
218-628-1464 • 800-228-5150
Fax: 218-624-7263
www.choicehotels.com/minnesota/duluth/comfort-inn-hotels/mn017
Gold award-winning hotel conveniently located off I-35 just three miles from downtown Duluth and Lake Superior. Guests enjoy a hot breakfast buffet, large indoor pool area with a pool, whirlpool and sauna and a great lobby bar. Meeting space available for up to 45 people.

Duluth Entertainment Convention Center - DECC

350 Harbor Drive
Duluth, MN 55802
218-722-5573
www.decc.org

The Garden Wedding/Event Center

425 S. Lake Ave.
Duluth, MN 55802
218-722-4724 • Fax: 218-720-3804
www.thegardenduluth.com

Greysolon by Black Woods

231 E. Superior St.
Duluth, MN 55802
218-722-7466 • Fax: 218-740-0443
www.greysolonduluth.com

Hampton Inn - Duluth Canal Park

310 Canal Park Drive
Duluth, MN 55802
218-720-3000 • 800-426-7866
Fax: 218-722-3969
www.duluthmn.hamptoninn.com

Heartwood Resort & Conference Center

N10884 Hoinville Road
Trego, WI 54888
715-466-6300
www.heartwoodresort.com





Lift Bridge Lodge

408 Canal Park Drive
Duluth, MN 55802
218-727-1378 • 800-517-4000
Fax: 218-727-1947

gm.mn031@choicehotels.com

Located on the shores of Lake Superior. We offer a free limited hot breakfast, indoor pool and two whirlpools. Our one-room suites include a refrigerator, microwave, coffee maker, hair dryers, iron and ironing board, sleeper-sofa, 42-inch cable TV, free HBO, free high-speed internet and fitness center. Lift Bridge Lodge is part of the Ascend collection of boutique hotels by Choice Hotels. www.liftbridgelodge.com

Minnesuing Acres

8084 E. Minnesuing Acres Drive
Lake Nebagamon, WI 54849
715-374-2262 • Fax: 715-374-2118
www.minnesuingacres.com

Northwood Technical College

600 N. 21st St.
Superior, WI 54880
715-394-6677 • Fax: 715-394-3771
www.northwoodtech.edu

Pike Lake Golf & Beach Club

4895 E. Pike Lake Road
Duluth, MN 55811
218-590-3325
www.pikelakemn.com

Radisson Hotel Duluth Harborview

505 W. Superior St.
Duluth, MN 55802
218-727-8981 • Fax: 218-727-0162
www.radissonhotels.com/en-us/hotels/radisson-duluth

Sheraton Duluth Hotel

301 E. Superior St.
Duluth, MN 55802
218-733-5660 • Fax: 218-733-5650
www.sheratonduluth.com

CLYDE EVENT CENTER // MALTING BUILDING



GRAND GATHERINGS IN DULUTH'S HISTORICAL HEART

Make your next gathering unforgettable at Clyde Event Center and Malting Building, where get-togethers get going. Our state-of-the-art spaces are studded with nods to history while incorporating the latest in audio/visual technology. And with expert staff and on-site catering we can execute memorable events — from grand weddings to corporate gatherings.

TO PLAN YOUR NEXT EVENT, EMAIL
EVENTS@CLYDEIRONWORKS.COM

CLYDEIRONWORKS.COM
218-727-1150





LODGING

HOTELS, RESORTS AND BED & BREAKFASTS

Duluth is a premier year-round tourism destination, providing ample and varied lodging to define your experience. Whether seeking a romantic getaway, adventurous camping trip, budget-friendly weekend or a family vacation with the kids, Duluth delivers abundant lodging options to suit the needs of all visitors and families.

Varied neighborhoods: The Duluth area boasts several distinct neighborhoods with plentiful lodging. Enjoy the Lake Superior shore up close while viewing ships from your hotel room in Canal Park. Once a barren warehouse district, Canal Park is now a booming tourist area with dozens of boutique shops and restaurants located within walking distance of Duluth's iconic Aerial Lift Bridge. Nightlife, theater and great shops are easily found in the downtown district, accessible through Duluth's extensive skywalk system. West Duluth – tucked into a cozy little valley, with Lake Superior and the St. Louis River on one side and the rolling hillside on the other – has been redefining itself as a crafts district, featuring outstanding breweries, manufacturers of tough outdoor apparel and daypacks, and small businesses specializing in artisan crafts. Miller Hill includes Duluth's primary shopping corridor with specialty stores and casual dining restaurants. And East Duluth is home to bed and breakfasts with a wealth of historic architecture and gracious amenities to pamper guests.

Extraordinary properties: It's not just the neighborhoods that define the stay. Duluth hosts an eclectic blend of remarkable lodging options. Bringing the children? A water park resort and upscale lodging facilities in both downtown and Canal Park provide your family with flexibility and activities for every age. Romantic stay? Duluth boasts multiple historic and remarkable bed and breakfasts. Camping? Spirit Mountain Recreation Area offers 73 campsites with quick access to its Adventure Park featuring the Timber Twister Alpine Coaster, 9-hole mini golf course, disc golf, Timber Flyer Zip Line, lift-access mountain bike trail system, scenic chairlift rides, skiing and snowboarding.

With plentiful options, visitors are certain to find lodging accommodations to suit the perfect stay. ■



Americinn by Wyndham Duluth

901 Joshua Avenue
Duluth, MN 55811
218-723-8607 • Fax: 218-722-9465
www.wyndhamhotels.com/ameriinn/duluth-minnesota/ameriinn-by-wyndham-duluth/overview

Americinn Lodge & Suites/Two Harbors

1088 Highway 61
Two Harbors, MN 55616
218-834-3000 • 800-634-3444
Fax: 218-834-5581
www.americinn.com/hotels/mn/twoharbors

Americinn of Duluth/Proctor

185 Highway 2
Proctor, MN 55810
218-624-1026 • Fax: 218-624-2818
www.americinnduluthsouth.com

Beacon Pointe Resort

2100 Water St.
Duluth, MN 55812
218-724-1100 • 877-462-3226
www.beaconpointeduluth.com

Canal Park Lodge

250 Canal Park Drive
Duluth, MN 55802
218-279-6000 • 800-777-8560
Fax: 218-279-4055
www.canalparklodge.com

This lakeshore property has 116 well-appointed rooms – all featuring refrigerators, microwaves and free high-speed internet access. Enjoy the beautiful view from one of our lakeside balcony rooms or lounge in one of our spacious hot tub suites. Start your day off with a hot breakfast featuring scrambled eggs, hot meat item and Belgian waffles.



Comfort Inn - West

3900 W. Superior St.
 Duluth, MN 55807
 218-628-1464 • 800-228-5150
 Fax: 218-624-7263
www.choicehotels.com/mn017

Gold award-winning hotel conveniently located off I-35 just three miles from downtown Duluth and Lake Superior. Guests enjoy a hot breakfast buffet, large indoor pool area with a pool, whirlpool and sauna and a great lobby bar. Meeting space available for up to 45 people.

Country Inn & Suites - Duluth North

4257 Haines Road
 Duluth, MN 55811
 218-740-4500 • 800-456-4000
 Fax: 218-740-3851
www.countryinns.com/duluthmn_north

Days Inn Duluth Lakewalk

2211 London Road
 Duluth, MN 55812
 218-728-5141 • 877-245-0730
www.daysinnduluth.com

Duluth Inn and Suites

9330 W. Skyline Parkway
 Duluth, MN 55810
 218-628-0668 • 800-937-8376
 Fax: 218-628-3095
www.bwspiritmountainduluth.com

Duluth Press Building LLC

1915 W. Superior St.
 Duluth, MN 55806
 218-213-8160
duluthpressbuilding.com

Duluth Tru by Hilton Mall Area

503 Clearwood Drive
 Duluth, MN 55811
 218-722-0222 • 701-306-1659
www.hilton.com/en/hotels/dlhmaru-tru-duluth-mall-area

Space to spread out.
 Comfort to keep you in.

Residence INN
 BY MARRIOTT

Travelers looking for longer stays will find the All-Suite Residence Inn by Marriott - Duluth as accommodating as it is comfortable.



NEWLY RENOVATED

Residence Inn by Marriott - Duluth

517 West Central Entrance
 Duluth, MN 55811

218.279.2885

www.Mariott.com/DLHRI

Images shown are a representation of the hotel's facilities and amenities

Edgewater Hotel & Waterpark

2400 London Road
 Duluth, MN 55812
 218-728-3601 • 800-777-7925
 Fax: 218-728-3727
www.duluthwaterpark.com

Fairfield by Marriott Duluth - Miller Hill

1510 Maple Grove Road
 Duluth, MN 55811
 218-623-3247
www.marriott.com/dlhfd

(Continued on next page.)



Fitger's Inn

600 E. Superior St.
Duluth, MN 55802
218-722-8826 • 888-348-4377
Fax: 218-722-8826
www.fitgers.com

Grand Superior Lodge

2826 Highway 61
Two Harbors, MN 55616
218-834-3796 • 800-627-9565
Fax: 218-834-6396
www.grandsuperior.com

Hampton Inn - Duluth Canal Park

310 Canal Park Drive
Duluth, MN 55802
218-720-3000 • 800-426-7866
Fax: 218-722-3969
dulmn.hampton@hilton.com
Centrally located in Duluth next to Lake Superior, we are the perfect location for work and play. We offer free high-speed internet access, refrigerators, microwaves and 42-inch LCD TVs in every room. Lakeview rooms available. We have meeting space for 48 and the Duluth Entertainment Convention Center is just three blocks away. Enjoy complimentary hot breakfast and the many restaurants close by. Earn points and miles with HHonors.
www.duluthmn.hamptoninn.com

Hampton Inn and Suites - Duluth North

1002 Mall Drive
Duluth, MN 55811
218-481-7707
www.hilton.com/en/hotels/dlhnmx-hampton-suites-duluth-north-mall-area

Holiday Inn & Suites - Duluth Downtown

200 W. First St.
Duluth, MN 55802
218-722-1202 • 800-477-7089
Fax: 218-722-0233
www.holidayinn.com/duluthmn

Holiday Inn Express & Suites Duluth North - Miller Hill

4725 Market St.
Duluth, MN 55811
218-722-0909 • Fax: 218-722-0901
www.hiexpress.com/duluthnorth

The Inn On Lake Superior

350 Canal Park Drive
Duluth, MN 55802
218-726-1111 • 888-668-4352
Fax: 218-727-3976
www.theinnonlakesuperior.com

Larsmont Cottages on Lake Superior

596 Larsmont Way
Two Harbors, MN 55616
218-834-8250 • 866-689-5634
Fax: 218-834-8269
www.larsmontcottages.com

La Quinta Inn & Suites

1805 Maple Grove Road
Duluth, MN 55811
218-722-0700
www.laquintaduluth.com

Lift Bridge Lodge

408 Canal Park Drive
Duluth, MN 55802
218-727-1378 • 800-517-4000
Fax: 218-727-1947
Located on the shores of Lake Superior. We offer a free limited hot breakfast, indoor pool and two whirlpools. Our one-room suites include a refrigerator, microwave, coffee maker, hair dryers, iron and ironing board, sleeper-sofa, 42-inch cable TV, free HBO, free high-speed internet and fitness center. Lift Bridge Lodge is part of the Ascend collection of boutique hotels by Choice Hotels.
www.liftbridgelodge.com

Pier B Resort Hotel

800 Railroad St.
Duluth, MN 55802
218-481-8888
www.pierbresort.com

Radisson Hotel Duluth Harborview

505 W. Superior St.
Duluth, MN 55802
218-727-8981 • Fax: 218-727-0162
www.radissonhotels.com/en-us/hotels/radisson-duluth

Residence Inn Marriott - Duluth

517 W. Central Entrance
Duluth, MN 55811
218-279-2885 • Fax: 218-279-2886
www.marriott.com/dlhri

**Sheraton Duluth Hotel**

301 E. Superior St.
Duluth, MN 55802
218-733-5660 • Fax: 218-733-5650
www.sheratonduluth.com

South Pier Inn

701 S. Lake Ave.
Duluth, MN 55802
218-786-9007 • 800-430-7437
Fax: 218-786-9015
www.southpierinn.com

The Suites Hotel at Waterfront Plaza

325 S. Lake Ave.
Duluth, MN 55802
218-727-4663 • 800-784-1716
Fax: 218-722-0572
www.thesuitesduluth.com

TownePlace Suites Duluth

1520 Sundby Road
Duluth, MN 55811
319-499-5101
www.kinseth.com

Tru by Hilton Duluth Mall Area

503 Clearwood Drive
Duluth, MN 55811
218-722-0222 • 701-306-1659
hilton.com/en/hotels/dlhmru-tru-duluth-mall-area





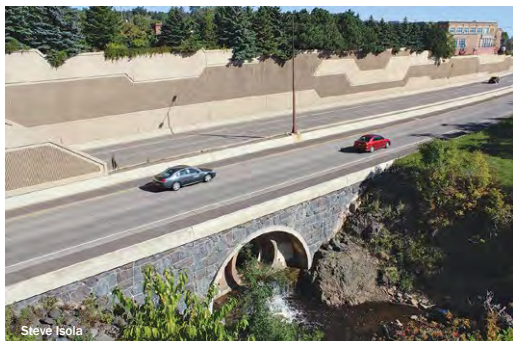
TRANSPORTATION

AIR, BUS, RAIL, HIGHWAYS AND WORLD PORT

Duluth is easily reached by air (its international airport is just six miles from downtown) and by land via cars, buses and trains. And its busy international port is the farthest inland port in the world.

Located at the crossroads of three major highways and served by four Class 1 railroads, the Port of Duluth-Superior is one of the most efficient, centrally located, multimodal hubs in North America. The port is the largest tonnage port on the Great Lakes, and it's ranked among the top 20 ports nationwide. With about 800 vessel visits per year, the port provides support to a wide range of industries, including agriculture, forestry, mining, manufacturing, power generation and passenger cruising. Outstanding maritime services are provided at the Port of Duluth-Superior, by far the largest and busiest port on the Great Lakes.

Duluth wouldn't be as accessible as it is without the finest urban freeway in the United States. I-35 runs through the heart of downtown with a tunneled freeway topped with beautiful gardens and parks. I-35 from the south, Minnesota Highway 61 from the north, U.S. 2/53, I-535 from the east and U.S. 2/53 and Minnesota Highway 194 (Central Entrance) from the west all provide entry to downtown Duluth. In addition, the city of Superior, Wis., is just a bridge away. Whether drivers take I-535's 7,980-foot John A. Blatnik Memorial Bridge or U.S. Highway 2's 8,395-foot Richard I. Bong Memorial Bridge, they'll be crossing the longest bridges in Minnesota.



worldwide destinations – Delta, United and Sun Country.

Railroads have long and faithfully served Duluth, connecting lake and land transportation for farmers, the taconite industry and other industries and companies. Minnesota's railroads rank highly for their transport of iron ore and are well known for efficient agricultural product conveyance. Four railroads connect Duluth to major markets throughout the United States and Canada: BNSF Railway, Canadian Pacific, CN and Union Pacific. ■

(Continued on next page.)



The Duluth Transit Authority (DTA) offers a vital public service by transporting more than three million riders per year using one of the most technologically sophisticated transit systems of its size in the nation. In addition to its regular route services, the DTA offers services for disabled riders as well as its Port Town Trolley circulator between downtown Duluth, Bayfront and Canal Park during the summer months. In February 2016, the DTA opened its new \$30 million Duluth Transportation Center (a multimodal transportation facility) in the heart of downtown.

Duluth International Airport is the region's largest airport – only 10 minutes from downtown Duluth and 15 minutes from Superior, Wis. The airport provides safe, secure, customer friendly and progressive air transportation facilities that serve the traveling public while promoting economic growth across the region. Three major airlines offer service to major cities that have hundreds of connections to



AIRPORT/AIRLINE

Duluth Airport Authority

4701 Grinden Drive
Duluth, MN 55811
218-625-7773
www.duluthairport.com

AVIATION SERVICES

Monaco Air Duluth

4535 Airport Approach Road
Duluth, MN 55811
218-727-2911
Fax: 218-727-6937
www.monacoairduluth.com

BUS/SHUTTLE SERVICES

Duluth Transit Authority

2402 W. Michigan St.
Duluth, MN 55806
218-722-4426
Fax: 218-722-4428
www.duluthtransit.com

Jefferson Lines

228 W. Michigan St.
Duluth, MN 55803
218-722-5591 • 218-722-5592
Fax: 218-726-0624
www.jeffersonlines.com

The Landline Co.

730 Arizona Ave., Ste. 235
Santa Monica, CA 90401
310-650-7206
www.landline.com

MARITIME SERVICES

Duluth Seaway Port Authority

2305 W. Superior St.
Duluth, MN 55806
218-727-8525 • 800-232-0703
Fax: 218-727-6888
www.duluthport.com

The Duluth Seaway Port Authority brings business to the Port of Duluth-Superior and economic growth to the region. Bulk commodities, containers, heavy-lift and project cargoes move through the Great Lakes St. Lawrence Seaway. With Duluth Cargo Connect and our CN Duluth Intermodal Terminal, we also connect customers to ports around the world via a multimodal network that moves containerized freight in and out of the heartland.



RAILROAD SERVICES

BNSF

2304 N. 28th St.
Superior, WI 54880
763-782-3212
www.bnsf.com

CN

1052 Railroad Ave.
Proctor, MN 55810
888-888-5909
Fax: 218-638-4398
www.cn.ca

Northern Plains Rail Services

600 Demers Ave., Fifth Floor
Grand Forks, ND 58201
701-229-3330
www.nprail.com

TRUCKING SERVICES

Halvor Lines Inc.

217 Grand Ave.
Superior, WI 54880
715-392-8161 • 715-395-7162
Fax: 715-392-1969
www.halvorlines.com

your
OPEN FOR BUSINESS

By road, rail or sea, we're equipped to get your cargo where it needs to be, seamlessly.

Whether importing or exporting, we can help you bypass the coastal bottlenecks and streamline your supply chain.

 **Duluth Seaway Port Authority**

Contact **Kate Ferguson** at 218.727.8525
or kferguson@duluthport.com
to discuss the possibilities.



UTILITIES

WATER/SEWAGE, GAS, ELECTRIC, COMMUNICATIONS

Duluth's water is drawn naturally from Lake Superior, the world's largest and purest expanse of fresh water. The abundance of this renewable resource, combined with Duluth's innovative treatment facilities, keeps our municipal water rates among the lowest in the region.

Electric service in Duluth is provided by Minnesota Power – An ALLETE Company, an investor-owned utility that offers residential electric rates consistently among the lowest in the upper Midwest. The region's robust utility infrastructure also includes water, natural gas and sewage service provided by ComfortSystems through the City of Duluth's Public Works & Utilities Department.

Area residents and businesses take advantage of a wide variety of programs and services offered by the Western Lake Superior Sanitary District. They include recycling, materials recovery, hazardous waste disposal and a yard waste and organics composting site. In addition, several garbage haulers and recyclers offer competitive rates.

Duluth is also home to a number of data centers and is served by companies that provide the sophisticated, information-based systems required by modern businesses. ■

DULUTH WATER, GAS & SEWAGE SERVICE

City of Duluth - Public Works & Utilities ComfortSystems

520 Garfield Ave.
Duluth, MN 55802
218-730-4050 • Fax: 218-730-4177
www.comfortsystems.com

DULUTH AREA ELECTRIC SERVICE

Minnesota Power - An ALLETE Company

30 W. Superior St.
Duluth, MN 55802
218-722-2625 • 800-228-4966
Fax: 218-723-3960
www.mnpower.com

Minnesota Power is a utility company based in Duluth, Minn., and is owned by ALLETE Inc., a provider of affordable, reliable energy services in the Upper Midwest. Other ALLETE business include: Superior Water, Light & Power; ALLETE Clean Energy; ALLETE Renewable Resources; BNI Energy; and ALLETE Properties. Follow us on Facebook, Instagram and Twitter or at mnpower.com.

Call 800-228-4966 for questions about your electric service. To apply for electric service, call Mon.-Fri. between 8 a.m.-4:30 p.m.

Automated Meter Reading Reporting:

888-30-METER (306-3837)

Automated Outage Reporting:

800-30-POWER (307-6937)

Online Outage Reporting:

mnpower.com/outagecenter

HERMANTOWN & PROCTOR GAS SERVICE

Minnesota Energy Resources

910 Cloquet Ave.
Cloquet, MN 55720
(800) 889-9508
www.minnesotaenergyresources.com

HERMANTOWN WATER & SEWAGE SERVICE

Hermantown Utility Department

5105 Maple Grove Road
Hermantown, MN 55811
218-729-3609 • Fax: 218-729-3620
www.hermantownmn.com

PROCTOR WATER, SEWAGE & GAS SERVICE

Proctor Public Utilities

100 Pionk Drive
Proctor, MN 55810
218-624-4055
www.proctormn.gov

PHONE SERVICE

Duluth is the telecommunications hub of Northeastern Minnesota. A variety of service providers and state-of-the-art fiber optics and other communications equipment give Duluth distinct market advantages for information-based businesses and industry.

TELECOMMUNICATION SERVICES

CenturyLink

322 W. First St.
Duluth, MN 55802
218-720-4037 • Fax: 218-722-4035
www.centurylink.com

(Continued on next page.)



Steve Isola

Nextera Communications

325 W. First St., Ste. 100
Duluth, MN 55802
218-623-6500 • Fax: 218-623-6401
www.nextera.net

Spectrum Business/Enterprise

640 Garfield Ave.
Duluth, MN 55802
612-310-1555
www.business.spectrum.com

WIRELESS SERVICES**AT&T Mobility**

224 E Central Entrance
Duluth, MN 55811
218-336-3780 • 800-423-5514
Fax: 218-336-3789
www.att.com/wireless

WASTE COLLECTION/DISPOSAL**DEMOLICIOUS**

306 S. Central Avenue
Duluth, MN 55807
218-628-3880
Fax: 218-628-3706
www.demolicious.com

Hartel's Disposal LLC

930 Highway 2
Proctor, MN 55810
218-729-5446
Fax: 218-624-4792
www.hartels.com

SKB Environmental

P.O. Box 2232
Cloquet, MN 55720
218-878-0112
Fax: 218-879-2040
www.skbnorth.com

Twin Ports Trailer Trash

4041 Stebner Road
Duluth, MN 55811
218-206-7225
www.duluthjunkremoval.com

Veit Companies

1100 W. Gary St.
Duluth, MN 55808
218-626-2242 • 866-626-8348
www.veitusa.com

Waste Management

3101 W. Superior St.
Duluth, MN 55806
218-624-7838
Fax: 218-624-0934
www.wmnorthland.com

HAZARDOUS WASTE DISPOSAL**Western Lake Superior Sanitary District**

2626 Courtland St.
Duluth, MN 55806
218-722-3336 • 218-722-0761
Fax: 218-727-7471
www.wlssd.com

RECYCLING – SCRAP IRON & METALS**Azcon Metals**

630 Helberg Drive
Duluth, MN 55802
218-722-7703
Fax: 218-727-7160
www.azconmetals.com

RECYCLING SERVICES**Western Lake Superior Sanitary District**

2626 Courtland St.
Duluth, MN 55806
218-722-3336 • 218-722-0761
Fax: 218-727-7471
www.wlssd.com

**Western Lake Superior Sanitary District
Helps Businesses and Residents Alike**

Western Lake Superior Sanitary District (WLSSD) provides wastewater and solid waste services and oversight for a 530-square-mile region around Duluth that includes the cities of Duluth, Cloquet, Hermantown, Proctor, Carlton, Scanlon, Thomson, Wrenshall and nine sur-



Minnesota Power's Jean Duluth Solar.

ALLETE is proud to call Duluth home. From the heart of this city's vibrant downtown, our family of companies is putting sustainability into action across the nation, providing innovative and equitable energy solutions while honoring our commitments to the climate, our customers and the communities we serve.



[ALLETE.com/Sustainability](https://www.allete.com/Sustainability)

Connect with us   

rounding townships.

WLSSD operates a wastewater treatment plant, yard waste and organic composting site, a hazardous collection site and solid waste transfer station in the Lincoln Park neighborhood of Duluth. WLSSD also operates its Materials Recovery Center solid waste recycling and disposal site in Rice Lake Township. Hours vary by facility and season.

Wastewater and Solid Waste Services

Everything that goes “away” has a proper place in our community – whether it is flushed down a drain, tossed in the trash or recycled.

Disposal for Businesses

All businesses must have garbage disposal services. Businesses and industries in the WLSSD region can choose the hauler that suits their garbage and recycling needs. Garbage haulers are licensed and required to offer specific options for garbage and recycling services.

WLSSD’s Solid Waste Ordinance outlines requirements for businesses and other non-residential entities. Contact WLSSD with questions or for technical assistance, including waste audits, to meet your waste reduction goals.

Helping Local Businesses Reduce Waste

Reducing waste at work just makes sense! Save money and resources with wise purchasing, recycling and reusing. WLSSD can help. Staff members assist businesses with waste audits, discuss opportunities, help set up successful waste reduction and recycling programs, and are available to troubleshoot recycling and food waste challenges at your work-site.

Managing Banned Items and Bulky Wastes

Some items are banned from the garbage and need to be managed differently. Small amounts of appliances or electronics used in daily operations (like a break room television or a computer at an accounting firm) can be recycled for a fee at the Materials Recovery Center (MRC). Review the Business Guide to the MRC, available at www.wlssd.com, to see item limits.

There are also local licensed options for larger scale electronics recycling. Businesses wishing to recycle large amounts of electronics are encouraged to contact licensed electronics recyclers directly. Hazardous waste may be managed through WLSSD’s Clean Shop program or other hazardous waste hauling services in the region. Contact WLSSD for information and advice about how to properly manage other wastes.

Disposal for Residents

There are many options for curbside garbage and recycling service in the WLSSD service area. Residents in the WLSSD region can choose the waste hauler that suits their garbage and recycling needs. Self-hauling, or the transport of municipal solid waste (MSW, or



everyday items we use and then throw away – product packaging, food scraps, “disposables” of all kinds) is prohibited in the District. Residents must use a trash hauling service.

The Materials Recovery Center provides residents with a disposal option for bulky items or demolition debris that do not fit into the garbage can. The Household Hazardous Waste Facility provides a disposal option for wastes like chemicals, solvents, pesticides and paint products.

WLSSD’s Yard Waste Compost Site offers

residents a disposal option for brush and branches, leaves, grass clippings, garden waste and other vegetative materials.

Using the Materials Recovery Center

WLSSD’s Materials Recovery Center, located at 4587 Ridgeview Road, is available for residents and businesses to dispose of or recycle many bulky items that don’t fit in the trash can as well as other items (like appliances, tires and electronics) that should never go into the trash.

For more information from WLSSD’s website, visit www.wlssd.com



Public Service Numbers

AIRPORT INFORMATION

218-727-2968

AMBULANCE

Mayo Clinic Ambulance
4505 W. Michigan St.
Call 911 for emergencies
218-722-0807 for non-emergencies

BETTER BUSINESS BUREAU OF MINNESOTA & NORTH DAKOTA

651-699-1111
www.bbb.org

CHILD CARE RESOURCES & REFERRAL

Toll free 888-291-9811
www.parentaware.org

CIVIL AIR PATROL

Duluth Composite Squadron
218-213-7065
www.duluth.cap.gov

COMMUNITY POLICE STATIONS

WEST POLICING AREA

Neighborhoods: Lincoln Park, Riverside, Smithville, Morgan Park, Gary, New Duluth, Fond du Lac, Miller Hill, Duluth Heights, Piedmont Heights, Merritt, Denfeld, Lieutenant Ken Zwak
218-730-5691
Sergeant Mike Jambor
218-730-5467
Officer James Forsyth
218-730-5496
Area: HRA Properties City Wide
Officer Jared Warneke
Phone: 218-730-5712

EAST POLICING AREA

Area: Central Hillside, East Hillside, Canal Park/ Park Point, Endion, Chester Park, Congdon, Kenwood, Woodland, Vermillion, Morley Heights, Hunter's Park, Lakeside, Lester Park
Lieutenant David Drozdowski
Phone: 218-730-5697
Sergeant Ethan Roe
Phone: 218-730-5747
Area: DTA Transit
Officer Jeremy O'Connor
Phone: 218-730-5547
Life Safety Officer
Officer Bill Helgemoe
218-730-5472
Downtown COP
Officer Josh Kneeland
218-730-5573

DISABLED SERVICES/INFORMATION

Lighthouse Center for Vital Living
218-624-4828 or 800-422-0833
www.lcflv.org
St. Louis County Aging & Disability Services
218-726-2366
www.stlouiscountymn.gov

DEPARTMENT OF NATURAL RESOURCES

www.dnr.state.mn.us
Fishing/hunting/boats/snowmobiles
888-646-6367(MINN-DNR)
218-302-3264 - Duluth Area Fisheries Office

DOMESTIC ABUSE AND SEXUAL ABUSE

First Witness Child Advocacy Center
218-727-8353
1402 E. 2nd St.
www.firstwitness.org
Program for Aid to Victims of Sexual Assault (PAVSA)
218-726-1442
24/7 Crisis Line: 218-726-1931
32 E. First St., Ste. 200
www.pavsa.org
Safe Haven Shelter and Resource Center
Resource Center
218-623-1000
414 W. First St.
Shelter
218-728-6481
www.safehavenshelter.org

EMERGENCY - 911

(Police, Fire, Ambulance)
Coast Guard
1201 Minnesota Ave.
Main Office - 218-720-5412
Police - Main Office
2030 N. Arlington Ave.
218-730-5400
(Mon.-Fri. 8 a.m.- 6 p.m.)
Fire Department
602 W. Second St.
218-730-4394
Street, Water, Sewer
24-hour Emergency Response
218-730-4000
Natural Gas
24-hour Emergency Hotline
218-730-4100

LEGAL ASSISTANCE

Justice North
230 W. Superior St., Suite 200
877-696-6529
www.justicenorth.org

LIBRARIES

Main Library
520 W. Superior St.
218-730-4200
www.duluthpubliclibrary.org
Mount Royal Branch
105 Mount Royal Shopping Center
218-730-4290
West Duluth Branch
5830 Grand Ave.
218-730-4280

LICENSES AND PERMITS

The City Clerk's Office handles elections, voter registration and the issuance of certain licenses and permits, such as building/remodeling permits, liquor licenses, pet licenses and resident parking permits.

City of Duluth
330 City Hall, 411 W. First St.
Phone: 218-730-5500
Fax: 218-730-5923
Parks & Recreation Dept.
218-730-4300
www.duluthmn.gov
St. Louis County Courthouse
Birth/death records and marriage licenses
218-726-2559
Judge or Court Administrator
to perform marriage:
218-726-2436 or 726-2460
Driver's License Exam Station
4602 Grand Ave., Ste. 990
218-216-0834
St. Louis County License Center
1600 Miller Trunk Highway
(east side entrance at Miller Hill Mall)
218-279-2520

Services:

Driver License/Permit/ID
Renewals, plat book sales, passport application processing and photos, property tax payment processing.
Motor Vehicle/DNR Licenses
Cars, trucks, motorcycles, trailers, snowmobiles, bicycles, boats, all-terrain vehicles, off-road vehicles, RVs, metal traction device stickers.
Duluth Area Motor Vehicle
Registration Office
Car, boat, ATVs, snowmobiles, fishing, hunting licenses
6630 Grand Ave.
218-624-0736

PASSPORTS

St. Louis County Auditor's Service Center
Miller Hill Mall
1600 Miller Trunk Highway, Ste. L22B
218-279-2520
Fax: 218-279-2521

POISON CONTROL CENTERS

800-222-1222

POST OFFICE STATIONS

www.usps.com
Duluth Post Office
2800 W. Michigan St.
218-275-8777
Lakeside Station
4427 E. Superior St.
Mount Royal Station
200 Mount Royal Shopping Center
Proctor Station
217 Second St.
West Duluth Station
215 N. Central Ave.
Customer Postal Unit
Pike Lake Super America
5601 Miller Trunk Highway

Road Conditions

Information - 511
www.511mn.org
Statewide 800-657-3774, ext. 3

Senior Citizen SERVICES

City of Duluth Senior Programs
218-730-4310
Duluth Aging Support
218-576-7123
Arrowhead Area Agency on Aging
218-722-5545
St. Louis County
218-726-2063
Minnesota Citizens Federation-Northeast
218-727-0207

SOCIAL SERVICES

United Way
2-1-1 Information & Referral
Dial 2-1-1 or 800-543-7709
Head of the Lakes United Way
218-726-4770
www.hlunitedway.org
St. Louis County Public Health
& Human Services
218-726-2222

TOURISM & VISITOR INFORMATION

Visit Duluth
522 S. Lake Ave.
218-722-4011 or 800-438-5884
www.visitduluth.com

Minnesota State Tourism
www.exploreminnesota.com
888-VISITMN / 651-556-8465
Thompson Hill
(State Information Center/Rest Area)
8525 W. Skyline Pkwy.
218-723-4938
State Parks Reservations
www.dnr.state.mn.us/state_parks/reservations.html
MinnesotaWebHome
866-857-2757

VOLUNTEERING

YMCA - Volunteer & Community Service
218-722-4745 ext. 159
www.duluthymca.org/programs/about/volunteer
Head of the Lakes United Way
218-726-4770
www.hlunitedway.org
Community Action Duluth
218-726-1665
www.communityactionduluth.org

WEATHER SERVICE

218-729-6697

