

chamberXpress

The Chamber Xpress newsletter is published monthly by the Duluth Area Chamber of Commerce. Members of the Duluth Area Chamber of Commerce receive the Chamber Xpress at an annual subscription rate of \$12, which is included in their membership dues.

Periodicals mail postage paid at:
Duluth, MN
Publisher, Matt Baumgartner
5 W. First St.,
Duluth, MN 55802
Phone: (218) 722-5501
Fax: (218) 722-3223
Email: inquiry@duluthchamber.com
Website: www.duluthchamber.com

The printing of the Chamber Xpress is done at: Arrowhead Printing, Duluth, MN.

POSTMASTER:
Please return form 3579 to the Chamber Xpress,
Duluth Area Chamber of Commerce, 5 W. First St.,
Duluth, MN 55802 • Phone (218) 722-5501

Publication # 526-390

SAVE THE DATE: After Hours Holiday Party

TUESDAY, DECEMBER 6

4:30 p.m. to 6:30 p.m.

Greysolon Ballroom

231 E. Superior St.



**DULUTH
AREA CHAMBER OF
COMMERCE**

Moving business forward. ▶

Greysolon



chamberXpress

DULUTH AREA CHAMBER OF COMMERCE MONTHLY NEWS

Vol. 23 • Issue 8 August 2022

www.duluthchamber.com

Fuse Fest 2022!

The local food and drink market of your dreams returns at our most exciting networking offering of the year. Inspired by the great food halls of Europe, Fuse Fest 2022 is a foodies' paradise, offering attendees a true taste of the local culinary scene.

Savor it all while mingling with established professionals and rising stars celebrating the leadership training of young Northland professionals offered by Fuse Duluth. Grab your friends for a fun-filled evening of music and networking.

Duluth offers an abundance of tasty masterpieces from local restaurants as well as award-winning brews created in our own backyard. We are fortunate to have so many unique options – but have you had time to try them all?

On September 22, Fuse Duluth will bring you the opportunity to feast on scrumptious creations from local vendors and taste the latest beverages from our top-notch breweries. The combinations are endless and will leave you with a true taste of Duluth!

All proceeds support the Fuse program. Your ticket allows you access to unlimited food and beverages throughout the night. Register at Fuseduluth.com.



Thursday, September 22

4:30 p.m. to 7:30 p.m.

**Clyde Iron Malting Building Event Center
2907 Helm St.**

**\$25 Chamber members
\$30 nonmembers**



**DULUTH
AREA CHAMBER OF
COMMERCE**

Moving business forward. ▶

Chamber Welcomes 11 New Board Members

Our Chamber is fortunate to be led by a visionary group of business leaders. Effective October 1, our board of directors will be fortified with 11 new members who will embrace the work of the existing board. The Chamber's Nominating Committee recently ensured the board will remain vibrant by selecting the following leaders to serve:

AJ Axtell, Western Lake Superior Sanitary District

Dan Berg, National Bank of Commerce

Sue Bosell, UMD

Dan Collison, Sherman Associates

Christie Erickson, Vitta Pizza

Ben Fagerlie, Arrowhead Surgery Center

Briana Johnson, American Heart Association

Lindsay Kern, Kern and Kompany

Ben Norton, Encompass Real Estate Investment Services

Chris Sorenson, St. Luke's

Brianna Vander Heyden, Marshall School

Chamber members can petition for additional nominations by securing the nominee's approval and submitting the petition, listing 25 members in good standing, with their signatures. The petition must be delivered to the Chamber office by Monday, August 15, before noon. The address is 5 W. First St., Suite 101, Duluth, MN 55802. The nominees will be presented for approval by the board at the board meeting scheduled for August 30.

The Chamber's board and staff members wish to thank the following outstanding leaders who will complete their service on the board effective September 30:

Michael Boeselager, St. Luke's

Karen Stromme, UMD Athletics

Please join me in congratulating the candidates and thanking the leaders who are completing their board service.

Matt Baumgartner

Matt Baumgartner
President



What matters most...

is that you get to enjoy this moment - feeling completely at ease - because your independent insurance agent and the company that stands behind them has you covered.

YOUNG & ASSOCIATES INSURANCE

WEST BEND

Duluth, MN • (218) 722-1481

On Our Radar

Two Enjoyable Events.
Two Compelling Speakers.

Let's Do Lunch, Duluth – Tuesday, Aug. 9

“Generous Community: Resilience in Challenging Times,” presented by President and CEO Shaun Floerke, Duluth Superior Area Community Foundation

In January 2021, Shaun Floerke traded in his gavel as a Duluth-based judge in Minnesota's Sixth Judicial District for the role of president and CEO of the Duluth Superior Area Community Foundation. Amidst a pandemic, Shaun took on the challenge that would provide him – along with the foundation's donors, staff and partners – an opportunity to positively impact the lives of people in the Northland, improving and helping them proactively in ways that can prevent situations he had seen in his courtroom. Join us at Let's Do Lunch, Duluth to hear about the immense impact the Duluth Superior Area Community Foundation is making in our region and beyond. Thank you to our good friends at Johnson, Killen & Seiler PA for sponsoring this gathering.



Shaun Floerke

11:45 a.m. to 1 p.m.*
Greysolon by Black Woods
231 E. Superior St.
Chamber members \$35/nonmembers \$45

(*We encourage you to arrive early and/or walk or carpool due to recent parking issues.)



Let's Connect @ Clyde – Tuesday, September 13

“Navigating City Hall: Support and Guidance for New Business Startups and Existing Business Support,” presented by Deputy Director of Planning and Economic Development Department Adam Fulton and Construction Services and Inspections Manager Wendy Rannenberg, both of the City of Duluth



Adam Fulton



Wendy Rannenberg

Developing a new building or upgrading a building for your new or expanding business can be daunting and fraught with concerns about delays and unexpected costs. In this Connect at Clyde presentation, this City of Duluth team will help explain the process for moving a project forward together with the city and your contractor, from idea generation to occupancy and operation. The goal is a focus on both small project details to help things move forward predictably, and on the big picture to be sure broader goals are achieved with an aim toward business success and a healthy, resilient community. Thank you to our good friends at LHB, Inc. for sponsoring this gathering.

11:45 a.m. to 1 p.m.
Clyde Iron Works Restaurant, Catering and Event Center
2920 W. Michigan St.
Chamber members \$30/nonmembers \$40



To register for these luncheons, visit www.duluthchamber.com or call (218) 722-5501.

In Case You Missed It

Golf Classic Winners Announced!



The 53rd Annual Chamber Golf Classic presented by Spectrum was a hot one! On July 18, the event teed off at Ridgeview Country Club. More than 200 golfers, 15 volunteers, and 66 sponsor organizations enjoyed golf, networking and fun.

Thank you to our marquee sponsor, Spectrum. Your partnership made this event an outstanding experience and memorable day for everyone. In addition, thanks to our many committed sponsors and volunteers who participated. Your support is greatly appreciated and we thank you for making the Chamber Golf Classic a huge success.

The Ridgeview Country Club staff deserves much credit for all of their hard work. Their gracious hospitality made it yet another unforgettable Classic for the books. We are proud, honored and grateful for your partnership in commerce.



1st Place: Scott Sandelin,
Dan Berg, Chad Curran,
Bill Watson, Jon Francisco



2nd Place: Kyle Holmgren, Mike Hollway,
Kirsten Horvat, Dave Dorsey



3rd Place: Dan Markham, Clayton Kettelhut,
Richelle Mullen



Random Draw Winners: Aiden Bachand,
Corey Bachand, Adam Bachand, John Conely

Proximity Winners:

- #2 Longest Drive In Fairway (Men) – Josh Lee
- #3 Closest To The Pin – Shane Hehir
- #5 Closest To The Pin – Joe George
- #7 Longest Drive In Fairway (Women) – Robin Larsen
- #9 Longest Putt On Green – Mark Oestreich
- #12 Closest To The Pin – Dan Markham
- #13 Longest Drive In Fairway (Men) – Anthony Smith
- #16 Longest Drive In Fairway (Women) – Ashley Thielke
- #18 Longest Putt On Green (Men/Women) – Becky Loop

SAVE THE DATE: Fuse Fright Night Pub Crawl

On October 28, Fuse Duluth will host a wicked good time at our first ever pub crawl! Gather your friends, plan your costume and join us for a haunted evening creep through the Lincoln Park's Craft District. The evening will include arranged stops at your favorite local watering holes, a chance to win prizes and a ton of fun. Beware of the scare, come to safely network if you dare!

Friday, Oct. 28
5 p.m. to 7 p.m.

Fuse Fright Night Returns!

CRAFT GOODS. CRAFT BEER. CRAFT EATS.
LINCOLN PARK CRAFT DISTRICT



Calendar

Please register for Chamber events at www.duluthchamber.com or by calling (218) 722-5501.

August 3 Wednesday

Professional Development Workshop

"A President's Guide to Nonprofit Leadership"

Presented by Richard Wolleat, Northwood Children's Services

11 a.m. to 12 p.m.

Live Webinar and Q&A

Sponsored by St. Scholastica's

Stender School of Business and Technology.



Chamber educational series:
Professional Development
workshop

August 5 Friday

Finally Fridays Networking Event

7:30 a.m. to 9 a.m.

Architectural Resources, Inc.

126 E. Superior St.

Sponsored by ARI.



ARCHITECTURAL RESOURCES INC.

August 9 Tuesday

Let's Do Lunch, Duluth

"Generous Community: Resilience in Challenging Times"

Presented by Shaun Floerke, Duluth Superior Area Community Foundation.

11:45 a.m. to 1 p.m.

Greysolon by Black Woods, 231 E. Superior St.

Sponsored by Johnson, Killen and Seiler.



August 24 Wednesday

Small Business Development Workshop

"What is Value Acceleration and How Can it Benefit Your Business?"

Presented by Bob Palmquist, Northspan.

11 a.m. to 12 p.m.

Live Webinar and Q&A

Sponsored by Lake Superior College.



Chamber educational series:
Small Business Development
workshop

August 25 Tuesday

After Hours Networking Event

4:30 p.m. to 6 p.m.

Essentia Health Surgery Center – Miller Hill Health Plaza,

1600 Miller Trunk Hwy.

Sponsored by Essentia Health.



August 27 Thursday

Leadership Duluth 2022-23 Orientation

4:30 p.m. to 7 p.m.

The Garden Event Center

425 S. Lake Ave.

Sponsored by North Shore Bank.



Success!

Anytime Fitness celebrated the remodeling of their 1515 E. Superior St. location.



Essentia Health Occupational Medicine Clinic celebrated the grand opening of the Miller Hill Health Plaza location, 1600 Miller Trunk Hwy., Ste. 1300.



North Shore Ballroom celebrated their first anniversary at 1515 Kenwood Ave., Ste. 300B.



Renovant Fitness celebrated their grand opening at 1921 W. Michigan St.



Guests from Udac enjoyed a ribbon-cutting celebration after a presentation and tour of the Chamber office. Thank you to Udac for helping people discover different employment opportunities in our community.



CHAMBER STAFF



Matt Baumgartner
President
(218) 740-3751
mbaumgartner@duluthchamber.com



Martha Bremer
Director of Fuse
and Leadership Duluth
(218) 740-3754
mbremer@duluthchamber.com



Aubrey Hagen
Director of Membership Development
(218) 740-3758
ahagen@duluthchamber.com



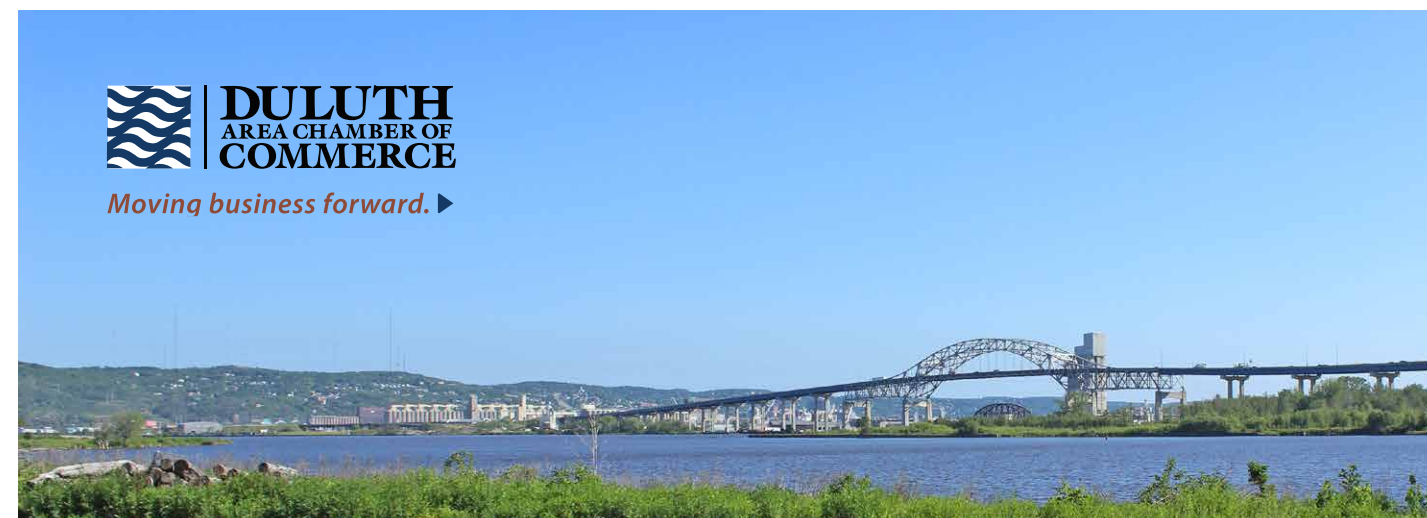
Chris Johnson
Director of Marketing & Communications
(218) 740-3755
cjohnson@duluthchamber.com



Kathleen Privette
Director of Events
(218) 740-3745
kprivette@duluthchamber.com



Lori Steinbach
Office Coordinator
(218) 740-3744
lsteinbach@duluthchamber.com



PROFESSIONAL DEVELOPMENT

August 3

Richard Wolleat, President and CEO of Northwood Children's Services, will present "A President's Guide to Nonprofit Leadership." Live Webinar and Q&A. 11 a.m to 12 p.m. Sponsored by St. Scholastica's Stender School of Business and Technology.

August 24

Bob Palmquist, Vice President of Northspan, will present "What is Value Acceleration and How Can it Benefit Your Business?" Live Webinar and Q&A. 11 a.m. to 12 p.m. Sponsored by Lake Superior College.

Chamber educational series:
Professional Development
workshop



Chamber educational series:
Small Business Development
workshop



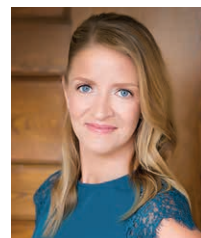
FUSE DULUTH

Let's Do It Again Next Year!

If you didn't make it to Fuse Duluth's GREAT Duluth Race, you missed an awesome day of team building and fun! Don't miss the adventure next year — register to secure a team spot today. Your race begins on June 29, 2023!



Martha Bremer
Director of Fuse and Leadership Duluth
(218) 740-3754
mbremer@duluthchamber.com



Support Local Fall Guide

Supply chain disruptions. Staffing shortages. Inflation. Your support of local business is more important than ever. By shopping in our neighborhoods, you not only impact small business families, your locally spent dollar returns more than

three times as much money to our local economy.

This back-to-school season and into fall, let's pull together to support small businesses.

The Chamber is excited to announce the distribution of its 2022 Support Local Fall Guide, coming to inboxes and the Chamber website this month.

You, too, can promote your organization, events, and fall specials in the Fall Guide.

The Chamber's seasonal guide is an exclusive, cost-effective way to highlight your organization's seasonal specials, discounts, and gift ideas in front of Chamber member businesses and their staff. Your member-to-member promotion will be distributed directly into 3,500 inboxes and featured on www.duluthchamber.com.

Distribution of the 2022 Fall Guide is scheduled for August 18.

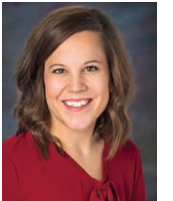
\$300 to participate | \$200 nonprofit

Contact Chris Johnson to reserve your space in the Fall Guide: cjohnson@duluthchamber.com.

Reserve by Tuesday, August 9

Anticipated Distribution Date: August 17-19

\$300 | \$200 nonprofit



Chris Johnson
Director of Marketing and Communications
(218) 740-3755
cjohnson@duluthchamber.com

Welcome New Members

American Heart Association

Briana Johnson
1346 W. Arrowhead Rd., Ste. 325
Duluth, MN 55811
(218) 310-0071
www.northlandheartwalk.org
Partnering with local businesses to fight heart disease and stroke to create a world of longer, healthier lives.

Blessing Royal Collection

Jasmine Flowers
12 S. 15th Ave.
Duluth, MN 55812
(218) 464-0223
www.facebook.com/BlessingRoyalCollection1103
Blessing Royal Collection is a braiding and styling salon, and a clothing and eyelash boutique, also providing and selling products to support textured hair.

Body and Brain Weight Management

Griffin Hopf
1011 84th Ave. W.
Duluth, MN 55808
(218) 979-4293
www.bodyandbrainwm.com
Body and Brain Weight Management is a virtual weight management program that aims to help clients achieve and maintain a healthier body composition through a research-based and emotionally informed approach.

Cintas

Blake Yorde
367 Garfield Ave., Ste. 3
Duluth, MN 55802
(218) 310-3353
www.cintas.com
Uniform rental, leasing, purchase, cleaning, design, and customization; janitorial supplies and services; floor mat rental; restroom cleaning; towel and linen services.

Intectural

Jason Peterson
1025 London Rd.
Duluth, MN 55807
(218) 336-8576
www.intectural.com
Intectural distributes premium, innovative architectural materials with a commitment to conservation and sustainability.

Mesabi Preschool Academy LLC – Duluth

Shelly J. Vanneste
26 E. Superior St., Ste. 103
Duluth, MN 55802
(218) 464-0225
www.mesabipreschoolacademy.com
High quality, structured, curriculum-based, childcare/preschool program.

PRO Resources

Christina Perez
1271 Highway 10 W.
Detroit Lakes, MN 56501
(786) 306-1008
www.proresourceshr.com
As a professional employer organization (PEO), PRO Resources provides outsourcing of employee management tasks such as employee benefits; payroll; workers' compensation; risk/safety management; training, and development. They can thus serve as an employer of record for tax and insurance purposes.

Russell Steel

Lisa Hansmann
329 2nd St., Building 145
Proctor, MN 55718
(218) 727-1225
www.russellsteelduluth.com
Russell Steel is a provider of carbon steel, aluminum, and stainless steel, located in Proctor, MN.

Sherman Associates

Dan Collison
233 Park Ave., Unit 201
Minneapolis, MN 55415
(612) 341-1176
www.shermanassociates.com
Sherman Associates is a commercial real estate company committed to the production of quality urban housing and commercial products.

Supporting Strategies | Duluth and Stillwater

Kristine Barnes
3789 Eagle Ridge Rd.
Duluth, MN 55803
(218) 216-6095
www.supportingstrategies.com/locations/duluth-stillwater/
We pair advisory and consulting services with day-to-day accounting and bookkeeping functions including financials, budgeting, planning, and analysis; revenue and accounts receivable; expenses and accounts payable; human resources and payroll; bookkeeping and month-end close.

Symmetry Chiropractic & Physical Therapy

Dr. Danielle Weigel
1301 Miller Trunk Hwy, Ste. 300
Duluth, MN 55811
(218) 722-9300
www.chiropractorofduluth.com
At Symmetry Chiropractic and Physical Therapy Duluth, we address the cause of pain, not just the symptom, and believe that education is a big part of our clients' success.

Two Rivers Counseling

EveLynn Fellersen
404 W. Superior St., Ste. 210
Duluth, MN 55802
(218) 606-1100
www.tworiverscounselingduluth.com
Mental health clinic serving all ages to help support and treat mental health.