

chamberXpress

The Chamber Xpress newsletter is published monthly by the Duluth Area Chamber of Commerce. Members of the Duluth Area Chamber of Commerce receive the Chamber Xpress at an annual subscription rate of \$12, which is included in their membership dues.

Periodicals mail postage paid at:
Duluth, MN
Publisher, Matt Baumgartner
5 W. First St.,
Duluth, MN 55802
Phone: (218) 722-5501
Fax: (218) 722-3223
Email: inquiry@duluthchamber.com
Website: www.duluthchamber.com

The printing of the Chamber Xpress is done at: Arrowhead Printing, Duluth, MN.

POSTMASTER:
Please return form 3579 to the Chamber Xpress,
Duluth Area Chamber of Commerce, 5 W. First St.,
Duluth, MN 55802 • Phone (218) 722-5501

Publication # 526-390

In Case You Missed It

A Call to Action From CHUM's New Executive Director

On April 12, an incredible crowd of community leaders gathered at Greysolon Ballroom to hear from CHUM's new executive director, John Cole, who detailed a three-phase plan to combat homelessness in our community.

His call to action for attendees was that we create a community that cares about all of its people, and to play our part to assist with the efforts of finding shelter and support for these individuals. Thank you to our friends at St. Luke's for sponsoring this event.

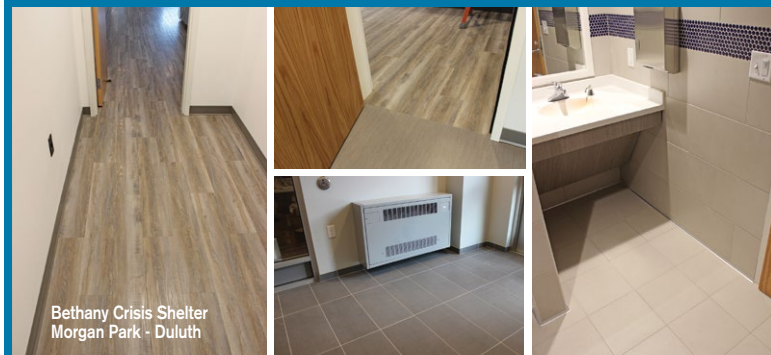


From left: Mike Boeselager, St. Luke's and Chamber board of directors member; Daniel Fanning, Lake Superior College and Chamber board chair; Dr. Nick Van Deelan, St. Luke's; Executive Director John Cole, CHUM; Matt Baumgartner, Duluth Chamber president; Jessica Stauber, St. Luke's.

CHUM Executive Director John Cole explains a three-phase plan to combat homelessness.



CARPET • HARDWOOD • LAMINATE • VINYL • CERAMIC



Bethany Crisis Shelter
Morgan Park - Duluth

The Area's Leader in Commercial and Industrial Floor Coverings.



537 Garfield Ave. Duluth, MN 55802 • 218-723-4056 • Fax 218-723-4058 • www.contracttileandcarpet.com



chamberXpress

DULUTH AREA CHAMBER OF COMMERCE MONTHLY NEWS

Vol. 23 • Issue 5 May 2022

www.duluthchamber.com

Commitment to Change: The Road to Juneteenth Resource Guide

Instituting change within our community starts with commitment. Together with Lake Superior College, the Duluth Area Chamber of Commerce will be curating a robust resource guide to share with your organizations in honor of Juneteenth.

Commitment to Change: The Road to Juneteenth Resource Guide will provide your business actionable tools to commit to embracing and celebrating differences in the workplace and in the community. The Resource Guide will distribute daily information via email to include:

- Historical look at Juneteenth
- Juneteenth celebrations and activities
- Volunteer opportunities for Juneteenth celebrations
- Highlights of local BIPOC-owned businesses (Black, Indigenous and People of Color)
- Inclusive workplace tactics and strategies
- Upcoming diversity, equity and inclusion (DEI) events
- Highlights of local companies with strong DEI initiatives
- Lists of local BIPOC-serving organizations to get involved with or to donate

Local leaders and organizations will share expertise on the importance of diversity and building an inclusive regional economy, ways to become involved, and how you can make an impact in your business and community.

Stay tuned to DuluthChamber.com as more information about the Resource Kit becomes available.

Apply Now for Our Leadership Duluth Program

Applications Due June 30 for the 2022-2023 Program Year

By educating participants about Duluth's cultural and business history, along with current issues facing the region, Leadership Duluth aims to unite, equip and empower emerging leaders to foster change within their workplace and community. Through a structured series of educational and hands-on opportunities, participants will come to understand the inner workings of these components and how they contribute to the Duluth area's overall health.

Leadership Duluth participants commit to one full day of leadership training per month throughout the program year. Topics include: Leadership Philosophies, Social Challenges, Economic Development and Neighborhoods, Arts and Tourism, Health Care, Courts and Law, Policy and Advocacy, Environment and Sustainability, and Transportation and Infrastructure.

In addition, one service project will be organized, implemented and completed by assigned groups to benefit an area nonprofit organization. Participants will receive a cumulative review of the elements of a healthy community and be awarded the opportunity to reflect upon the contributions they make throughout the program.

Finally, in response to Leadership Duluth's call to action, participants will be asked to share their service project progress, plus their personal and business intentions for the future.

Candidates for Leadership Duluth:

- Demonstrate commitment to be an active participant in a year-long program.
- Are willing to meet/network with up to 50 classmates.
- Are willing to be challenged beyond their comfort zones.
- Have reputations as creative, responsible and effective people.
- Have an interest in surpassing conventional thinking to seek new growth opportunities and fundamental change.

Participants in Leadership Duluth:

- Engage with area leaders.
- Build access to area organizations and institutions.
- Gain industry and community awareness.
- Build lasting relationships with class members, area leaders and Leadership Duluth underwriters.

Class components of Leadership Duluth:

- Industry, organization and community exposure.
- Hands-on involvement.
- Professional networking.

Ready to apply? Visit leadershipduluth.com between April 18 and June 30 to fill out your application. Invest in your community, invest in your business, invest in yourself! The Leadership Duluth program year runs from August 2022-June 2023. Completed applications, along with one letter of recommendation and application fee of \$30, are due no later than Thursday, June 30. Tuition: \$1,525/Chamber members - \$1,925/nonmembers. Scholarship opportunities available; contact LEAD Scholarship at LEADDuluthscholarship@gmail.com. Questions? Contact Director of Leadership Duluth Martha Bremer at mbremer@duluthchamber.com.



A Cut Above the Rest.

Let our experienced staff help find coverage designed specifically for your beauty salon or barber shop, so you can focus on making your clients look their best.



(218) 722-1481 • Duluth, MN



www.younginsure.com



DULUTH
AREA CHAMBER OF
COMMERCE

Moving business forward. ▶

On Our Radar Two Enjoyable Events. Two Compelling Speakers.

Let's Connect @ Clyde – Tuesday, May 10

**“Quality Housing and High Quality of Life is Our Promise: P&R's Multifamily Model,”
presented by Vice President-P&R Properties Dante Tomassoni**

From Hermantown to Lincoln Park and over the bridge in Superior, P&R Properties has been developing much-needed multifamily housing since 2012. We understand the great need to develop and build all types of housing in our community, and we are dedicated to supporting those who can make this happen. Join us at the historic Clyde Iron Works Restaurant, Catering and Event Center to learn from Dante Tomassoni, P&R's vice president, as he explains what makes their developments unique. Thank you to our good friends at National Bank of Commerce for sponsoring this gathering.



Dante Tomassoni

11:45 a.m. to 1 p.m.
Clyde Iron Works Restaurant, Catering and Event Center
2920 W. Michigan St.
Chamber members \$30/nonmembers \$40



Let's Do Lunch, Duluth – Tuesday, June 14

**“Engaging and Elevating: Transforming Ideas into Accomplishments Since 1985,”
presented by Northspan President and CEO Elissa Hansen**

Since 1985, Northspan has been engaging and elevating our community to transform ideas into accomplishments. Recently, the talented team at Northspan went through a strategic planning process. Elissa will share the results of this strategic plan along with the long-term goals of their organization. As a partner with NORTHFORCE, Elissa will also address the workforce shortage that is affecting all of our organizations. Thank you to our good friends at Minnesota Power – An ALLETE Company for sponsoring this gathering.



Elissa Hansen

11:45 a.m. to 1 p.m.*
Greysolon by Black Woods
231 E. Superior St.
Chamber members \$35/nonmembers \$45



(*We encourage you to arrive early and/or walk or carpool due to recent parking issues.)



To register for these luncheons, visit www.duluthchamber.com or call (218) 722-5501.

A TEE-RIFIC Event

The Duluth Area Chamber of Commerce is excited to announce Spectrum as the new marquee sponsor for the 53rd Annual Chamber Golf Classic. This year's event is scheduled for Monday, July 18, at Ridgeview Country Club, 700 W. Redwing St.

Outdrive your competition at the largest business-to-business golf event in the Northland by becoming a sponsor. With sponsorships for every budget, this is your opportunity to be a driving force on the course with great opportunities that raise your organization's profile in front of 300 attendees.

Swing into action and be a part of the fun! Golfer registration opens in June. For details on sponsorship opportunities, please contact Director of Events Kathleen Privette at kprivette@duluthchamber.com.



Fuse Duluth is Talking Derby at Our Newest Networking Event

On July 28, it's time to talk “Derby” at Fuse Duluth's Big Hats and Bowties garden party at the exclusive Kitchi Gammi Club! Round up your friends and coworkers for an evening that is sure to make you feel like you hit the jackpot at the Kentucky Derby.

Hobnob with the talented local young professional workforce while sipping on mint juleps, indulging in delectable hors d'oeuvres and playing classic yard games. Don't miss the chance to build new relationships, ignite old ones and take pleasure in a fun-filled evening by beautiful Lake Superior. Dress to impress for your chance to win prizes!

SAVE THE DATE:
Big Hats and Bowties, presented by Wheeler Associates
Thursday, July 28
4:30 to 6:30 p.m.
\$15 Chamber members/\$20 nonmembers
Register at fuseduluth.com



Saints Match

Public school price. Private school perks.

A price match scholarship that makes attending St. Scholastica comparable to the cost of the University of MN.

css.edu/saintsmatch



Calendar

Please register for Chamber events at www.duluthchamber.com or by calling (218) 722-5501.

May 4
Wednesday

Professional Development Workshop

Topic: "Retention Strategies for Early- and Mid-Career Professionals," presented by Andrea Chartier, The College of St. Scholastica, and Eric Mistry 11 a.m. to noon
Live webinar
Sponsored by The College of St. Scholastica
Stender School of Business and Technology

Chamber educational series:
Professional Development
workshop



May 5
Friday

Finally Fridays Networking Event

7:30 to 9 a.m.
Location: St. Luke's Eye Care - Medical Arts Clinic,
324 W. Superior St., Ste. 200
Sponsored by St Luke's



May 10
Tuesday

Let's Connect @ Clyde

Topic: "Quality Housing and High Quality of Life is Our Promise: P&R's Multifamily Model," presented by Dante Tomassoni of P&R Properties 11:45 a.m. to 1 p.m.
Location: Clyde Iron Works, Restaurant, Catering and Event Center,
2920 W. Michigan St.
Sponsored by National Bank of Commerce



May 11
Wednesday

Leadership Duluth - Transportation & Infrastructure Day*

9 a.m. to 5 p.m.
Location: Minnesota Air National Guard - 148th Fighter Wing Base, 4680 Viper St.
Sponsored by North Shore Bank
*This event is open to current Leadership Duluth class members only.



May 17
Tuesday

After Hours Networking Event

4:30 to 6 p.m.
Location: Bremer Bank, 225 W. Superior St.
Sponsored by Bremer Bank



May 18
Wednesday

Small Business Development Workshop

Topic: "How to Enhance Events with Live Music," presented by Emma Deaner of the Duluth Entertainment Convention Center 11 a.m. to noon
Live webinar
Sponsored by Lake Superior College

Chamber educational series:
Small Business Development
workshop



May 19
Thursday

Ignite Your Fuse: Experiential Luncheon

Topic: New Blacklist Brewing Co. Story & Tour
Noon to 1 p.m.
Location: Blacklist Brewing Co., 120 E. Superior St.



May 24
Tuesday

Forum

Topic: "Supporting Our Deployed Military"

9 to 10 a.m.
Boat Club Restaurant & Bar, 600 E. Superior St.
Military members are often selflessly called to serve our state and nation by performing their duties away from their homes, families and employers. These service men and women are a vital part of our workforce, and their absence can represent challenges for their employers. Please join us at this upcoming Forum for a conversation as we share best practices to navigate those challenges and how to support both military-connected employees and their employers. Sponsored by our friends at the Duluth News Tribune.



Success!

Benders Shoes celebrates its new location at 901 W. Central Entrance (former Pier 1 Imports site) and expanded offerings of shoes, clothing and gifts.



The grand opening of Duluth Cookie Company (Crumb Cookies), 917 W. Central Entrance.



The grand opening of Blue Rock Grill, 1702 Miller Trunk Highway, Ste. 107.



US Bank celebrates updates of its Duluth Downtown Branch, 130 W. Superior St.

A Chamber Ambassador Q&A Rhonda Cory - Pro Print

What is your role at Pro Print?

I have been an account executive at Pro Print for the past 22 years, specializing in helping clients big or small with their printing needs. I help my clients get out information about their businesses and organizations, so they can succeed at what they do. Part of my role also includes marketing and sales management.

Why would you encourage an organization to become a member of the Duluth Area Chamber of Commerce?

There are many benefits of being a member of the Duluth Area Chamber of Commerce. I really like the Let's Do Lunch, Duluth and Let's Connect at Clyde lunches. They keep me informed on what is going on in our community, and they're also a great opportunity to network and meet new people in our business community. I also like the Professional Development Workshops, where I can learn anything from marketing tips to networking ideas and many more topics. The luncheons and workshops have been a great source of personal and professional development for me. The After Hours networking events are great, too – another opportunity to network and meet new people.

Why did you choose to become a Chamber Ambassador, and how does it benefit you and your employer?

I became an Ambassador to help other organizations celebrate their successes and milestones by attending their open houses and ribbon cuttings. I believe it is important for us to keep our business local and support the other businesses and organizations in our area. I have formed many connections and relationships that have benefited myself and Pro Print. Being an Ambassador also helps me stay current with the dynamic business landscape of Duluth.

What do you love most about our community?

I love Duluth! In fact, I am a tourist who moved here 22 years ago. I love the warm and welcoming people, beautiful Lake Superior and natural surroundings and the many cultural opportunities.



CHAMBER STAFF



Matt Baumgartner
President
(218) 740-3751
mbaumgartner@duluthchamber.com



Martha Bremer
Director of Fuse
and Leadership Duluth
(218) 740-3754
mbremer@duluthchamber.com



Aubrey Hagen
Director of Membership Development
(218) 740-3758
ahagen@duluthchamber.com



Chris Johnson
Director of Marketing & Communications
(218) 740-3755
cjohnson@duluthchamber.com



Kathleen Privette
Director of Events
(218) 740-3745
kprivette@duluthchamber.com



Lori Steinbach
Office Coordinator
(218) 740-3744
lsteinbach@duluthchamber.com

PROFESSIONAL DEVELOPMENT

Chamber educational series:

Professional Development
workshop



May 4

Andrea Chartier of The College of St. Scholastica and Eric Mistry present “Retention Strategies for Early- and Mid-Career Professionals” (11 a.m. to noon - live webinar). Sponsored by The College of St. Scholastica Stender School of Business and Technology.

Chamber educational series:

Small Business Development
workshop



May 18

Emma Deaner of the Duluth Entertainment Convention Center presents “How to Enhance Events with Live Music” (11 a.m. to noon - live webinar). Sponsored by Lake Superior College.

FUSE DULUTH

Join Us for the Blacklist Brewing Co. Story and Tour

Our friends at Blacklist Brewing Co. are expanding at a new location, and we are bringing you on an exclusive tour. On May 19, join Fuse Duluth on a private tour of the new, larger facility that will offer you a great place to socialize, hold your next private event, and provide an opportunity to test your axe-throwing skills. Axe throwing? Axe-o-lutely! This fun social activity, which we came to enjoy at their last location, will be returning at the new space.

Don’t miss the chance to get an insider look at this growing business. The event will include information on how Blacklist has become a downtown staple, a tour and box lunches to-go. We hope to see you there!

Space is limited, so register today at FuseDuluth.com.

Thursday, May 19
Noon to 1 p.m.
\$20 Chamber members/\$30 nonmembers



FUSE DULUTH
YOUNG PROFESSIONALS

Martha Bremer
Director of Fuse and Leadership Duluth
(218) 740-3754
mbremer@duluthchamber.com



The future you want for
your business?
We’ll help you grow into it.

In banking and business, relationships matter more than ever.
Talk to a Bremer banker today. Understanding is everything.

BREMER
BANK

bremer.com

© 2022 Bremer Financial Corporation. All rights reserved. Bremer and Bremer Bank are registered service marks of Bremer Financial Corporation.

WelcomeNewMembers

Aonehc LLC
Chenoa Williams
315 N. Lake Ave., Ste. 212
Duluth, MN 55806
(218) 461-1198
www.aonehcaonehc.com
My business is centered around my PanAfrIndigenous beadwork. I make items to adorn the body and statement pieces for the wearer. I also make personal care products, soaps, creams and lip moisturizers that are available online and at local farmers and art markets. I also make products that increase any space’s ambience, such as candles.

Aspis LLC
Jeff Wagner
315 W. First St., Ste. 204
Duluth, MN 55802
(816) 533-5509
www.aspis.consulting
Aspis is an IT professional services firm headquartered in Kansas City, Missouri, specializing in cybersecurity and management consulting. Aspis strives to make enterprise cybersecurity solutions and professional services accessible to all sizes of organizations.

Innovate 218 with IEDC
Tamara Lowney
12 NW Third St.
Grand Rapids, MN 55744
(218) 326-9411
www.itascadv.org
Innovate 218, an Itasca Economic Development Corp. program, helps start-ups

through resources we can connect them with. We offer free educational opportunities for entrepreneurs, host pitch competitions where they can win monies to fund business ideas, and mentorship opportunities. We’re also growing our reputation with local investors interested in local talent. We aim to be a warm body to take questions start-up folks may have and help them be successful with our network connections. There are a lot of people in the entrepreneurial development world; Innovate 218 makes it navigable.

Legal Aid Service of Northeastern Minnesota
Tara Serck
424 W. Superior St., Ste. 302
Duluth, MN 55802
(218) 623-8100
www.lasnem.org
LASNEM is an integral part of the justice system and a cornerstone of the commitment to equal access to justice for the most vulnerable. We provide legal representation to people in poverty in matters impacting their security, safety and well-being. We serve Carlton, Cass, Cook, Crow Wing, Itasca, Kanabec, Koochiching, Lake, Pine and St. Louis counties through five offices (Brainerd, Duluth, Grand Rapids, Pine City and Virginia). Administrative offices, the Private Attorney Involvement Program and Senior Citizens Law Project are at the Duluth office.

Natural Braiding & Beauty LLC and GJ&T’s Fashion Inc.
Denisa Ford-Washington
131 E. Fourth St., Ste. C
Duluth, MN 55805
(612) 636-2398
Facebook.com/NaturalBraidingAndBeautyLLC
Facebook.com/GJTS.FASHION
Natural Braiding & Beauty LLC and GJ&T’s Fashion aim to bridge cultural awareness gaps for textured hair and offer new forms of fashion. Denisa-Ford Washington is a licensed braider and nail technician. You deserve to look your best! Get a consultation to decide on the style to suit the confidence you walk in and the truth you stand on. GJ&T’s Fashion is a clothing, fragrance oil, shoes and accessories store. It provides high-quality clothing and product at an affordable price.

Neill Atkins Cetera Advisor Networks
Neill Atkins
4477 Lavaque Road
Hermantown, MN 55811
(218) 727-4767
Registered branch: (218) 729-7733
www.neillatkins.com
Neill has been in the financial industry since 1981 and has built a clientele that consists of individuals as well as small business owners, associates, nonprofit organizations and pension plans. His practice focuses on the advantages of asset management. Knowledge and experience play key roles in helping Neill’s clients more effectively work towards their financial goals. Registered Representative offering securities and advisory services through

Cetera Advisor Networks LLC, member FINRA/ SIPC, a Broker-Dealer and Registered Investment Adviser. Investments are: not FDIC/ NCUSIF Insured; no bank/credit union guarantee; may lose value; not a deposit; not insured by any federal government agency.

Pheasants Forever of St. Louis/ Carlton County
Matt Bremer
4819 First Ave. N.
Duluth, MN 55803
(218) 349-6126
www.stlouiscarltoncountypf.org
Pheasants Forever is committed to the preservation of all wildlife habitats, outdoor education and conservation. Check out our website or contact us for more information.

Prime IV Hydration and Wellness
Theresa Hanson
5115 Burning Tree Road, Ste. 302
Duluth, MN 55811
(218) 722-0719
www.primeivhydration.com
We are a hydration and wellness spa offering vitamin-infused IV therapy to help you look and feel your best.

Tom Meador
Duluth, MN
(320) 219-3703
thomasmeador200@gmail.com
Retired health care executive, nonprofit volunteer supporting Trinity Lutheran Church.