

## chamberXpress

The Chamber Xpress newsletter is published monthly by the Duluth Area Chamber of Commerce. Members of the Duluth Area Chamber of Commerce receive the Chamber Xpress at an annual subscription rate of \$12, which is included in their membership dues.

Periodicals mail postage paid at:  
Duluth, MN  
Publisher, Matt Baumgartner  
5 W. First St.,  
Duluth, MN 55802  
Phone: (218) 722-5501  
Fax: (218) 722-3223  
Email: inquiry@duluthchamber.com  
Website: www.duluthchamber.com

The printing of the Chamber Xpress is done at: Arrowhead Printing, Duluth, MN.

POSTMASTER:  
Please return form 3579 to the Chamber Xpress,  
Duluth Area Chamber of Commerce, 5 W. First St.,  
Duluth, MN 55802 • Phone (218) 722-5501

Publication # 526-390

## Leadership Duluth Turkey Drive Made the Holidays Brighter

The Leadership Duluth program in partnership with North Shore Bank donated \$12,525 for CHUM holiday meals, a record donation for the annual drive. The Thanksgiving Food Drive has been raising funds to supply the food shelf with turkeys and other holiday goods since 2010.

This year, the Premier Sponsor of the Leadership Duluth program, North Shore Bank, conducted their own internal fundraising and challenged their employees to donate \$5,000 to the cause with the incentive of matching dollar-for-dollar. The goal was met, raising a total of \$10,500 to contribute to the drive. This, in combination with Chamber member donations, totaled \$12,525 in donations to ensure all families in our region have the opportunity to provide a meal for their loved ones this holiday season.



# chamberXpress

DULUTH AREA CHAMBER OF COMMERCE MONTHLY NEWS

Vol. 23 • Issue 1 January 2022

www.duluthchamber.com

## Be the Voice of Business

25th Annual Duluth & St. Louis County at the Capitol Days – March 9 & 10

Plans are underway for our region's biggest citizen advocacy event – the 25th Annual Duluth & St. Louis County at the Capitol Days. The COVID-19 pandemic has drastically impacted our region. We need your help to be the voice of business to our elected officials and tell the stories of our challenges, our accomplishments, the strength of our community and how we seek their support in the 2022 legislative session.

At this time, the Duluth Area Chamber is planning an in-person Duluth & St. Louis County Days event. A contingency plan will be in place should we be unable to gather this March. No matter the platform, we remain dedicated to bringing attention to needs in our beloved Northeastern Minnesota.

Once again, we will place a huge emphasis on the Priorities Booklet. Aside from the printed format, we will also provide a digital version of the booklet with clickable links to your websites and information. We assure you that, despite our challenges due to the COVID-19 pandemic, we remain diligent in ensuring the success of this event.

You and your organization are needed to be a part of the largest advocacy event in the Northland. Contact Kathleen Privette at kprivette@duluthchamber.com to learn how you can have your voice heard at the Capitol. For registration details and hotel information, please visit www.duluthchamber.com.



**DULUTH**  
AREA CHAMBER OF  
COMMERCE

Moving business forward. ▶

## Fuse Duluth 2022 Luncheon Series Takes You Right On-Site



Critical new housing developments, trendy breweries, state-of-the-art health care facilities, community-friendly park space – Fuse Duluth brings you to some of the most inspiring locations in 2022!

Fuse strives to connect young professionals in our community through our programming. We are proud to offer quality educational offerings, volunteer opportunities and valuable networking events to area young professionals and established business professionals. We believe that by connecting, inspiring and educating the young professionals of the community, we will strengthen the future of our community for all of us.

The Fuse Leadership Council has been hard at work coordinating the Fuse 2022 calendar of events. This year, the program will be offering lunches that will take attendees on location. Our successful Ignite Your Fuse luncheon series will offer participants the opportunity to be the first to gain knowledge of the newest developments and trends our community is experiencing.

Attendees will go on-site at some of the most exciting new developments in town while networking and connecting with community members. You do not want to miss this six-part series!

**February 17** - Enger Lofts and Retail Story and Tour

**March 24** - Sneak Peek Story and Tour of the new Lake Superior Brewing Co. in Lakeside

**May 19** - Tour of the new Blacklist Artisan Ales expansion

**August 18** - Minnesota Power Plaza Community Lunch

**October 20** - Ronald McDonald House Story and Tour

**December 8** - Exploring STARBASE

The lunch series is only the beginning of new offerings coming to the Fuse schedule in 2022. This is your chance to open your eyes to all of the new and exciting things happening in our community. Ignite your Fuse – be a part of the momentum!

Sponsored by:



maurices

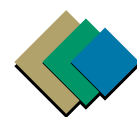


Martha Bremer  
Director of Fuse and Leadership Duluth  
(218) 740-3754  
mbremer@duluthchamber.com



CARPET • HARDWOOD • LAMINATE • VINYL • CERAMIC

The Area's Leader in Commercial and Industrial Floor Coverings.



**CONTRACT**  
TILE AND CARPET, LLC  
COMMERCIAL FLOORING SPECIALISTS



Decker Dwellings, Duluth, MN

537 Garfield Ave. Duluth, MN 55802 • 218-723-4056 • Fax 218-723-4058 • www.contracttileandcarpet.com



### Protection for Non-Profit Organizations

Our expertise and specialized programs provide protection for your organization.

Your services are invaluable to the Twin Ports; let us be of service to you!



www.younginsure.com

Duluth, MN

218-722-1481



## Let's Do Lunch, Duluth – Tuesday, Jan. 11

**“New Year, New View,” presented by Mayor Emily Larson, City of Duluth**

This will be Mayor Larson's seventh consecutive annual address to our business community. Her speech title articulates the tone of what promises to be a highly compelling and well attended luncheon. Join us in the new year to hear what the upcoming year will entail for our mayor and the City of Duluth. Thank you to our good friends at Bremer Bank for sponsoring this gathering.



Mayor Emily Larson

**11:45 a.m. to 1 p.m.**  
**Greysolon Ballroom by Black Woods**  
**231 E. Superior St.**  
**Chamber members \$35/nonmembers \$45**



## Let's Do Lunch, Duluth – Tuesday, Feb. 8

**“Duluth International Airport – The Next 20 Years,” presented by Executive Director Tom Werner, Duluth Airport Authority**

The Duluth International Airport is more than the sum of its runways, planes and people. It's also a promise — a promise to provide the accessibility, service and best-in-class experience that this region deserves. Leading this promise since 2012 is Executive Director Tom Werner. He will detail the next 20 years of the new Vision 2040 Master Plan for our beloved local – yet international – airport. Join us to learn what the future holds for the Duluth International Airport and its travelers. Thank you to our good friends at APEX for sponsoring this gathering.



Tom Werner

**11:45 a.m. to 1 p.m.**  
**Greysolon Ballroom by Black Woods**  
**231 E. Superior St.**  
**Chamber members \$35/nonmembers \$45**



Register at [duluthchamber.com](http://duluthchamber.com) or call (218) 722-5501. I look forward to seeing you there. Go where the in-crowd goes. Know what the in-crowd knows.



In support,  
Matt Baumgartner, President

# New Talent, New Ideas, New Perspectives

## The Fuse Duluth Board Welcomes Seven New Members

Executing the Fuse Duluth mission – “Developing young leaders to strengthen our community” – requires the regular rotation of a talented board. This January, Fuse will welcome seven new members to the Leadership Council. These enthusiastic individuals have joined six current members in a unified effort to shape, develop and grow the Fuse program.

### NEW MEMBERS:

- Dekotah Miska, Cirrus Aircraft
- Tara Smith, St. Luke's
- Emma Grover, Wheeler Associates
- Krystal Hoheisel, Aimclear Marketing Agency
- Shane Nies, Architecture Advantage
- Ashlee Smith, WDSE • WRPT
- Andrew Weisz, Finden Marketing

### CONTINUING MEMBERS:

- Julie Visger, Flint Group
- Grant Hauschild, Essentia Health
- Daniel Berg, National Bank of Commerce
- Mandi Robarge, ALLETE Inc./Minnesota Power
- Rob Hedberg, maurices
- Colleen Smith, Vista Fleet

Fuse is determined to bring civic, cultural and economic opportunities to young professionals who choose the Twin Ports as their home. Together, Leadership Council members work to attract and retain young professionals and help them get plugged into our community through events and endeavors centered on networking, education, discussion, dialog and involvement.

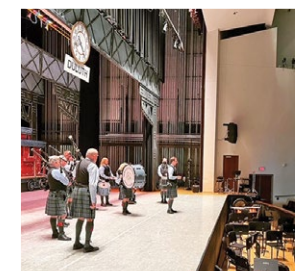
Join me in congratulating the Leadership Council on what is positioned to be an optimistic year for Fuse Duluth. The new ideas, energy and commitment that I have witnessed from the aforementioned young professionals are a true testament to our community's bright future.

Martha Bremer  
Director of Fuse and Leadership Duluth  
(218) 740-3754  
[mbremer@duluthchamber.com](mailto:mbremer@duluthchamber.com)



## A Leadership Duluth Arts & Tourism Overview

On December 8, the Leadership Duluth program conducted its fourth full-day session, titled “Arts and Tourism.” The exciting day started with a behind-the-scenes tour of the Minnesota Ballet's “Nutcracker” production at the Duluth Entertainment Convention Center's Symphony Hall. Following the tour, we experienced live performances from the Minnesota Ballet, Duluth Playhouse, Duluth Superior Symphony Orchestra, Scottish Heritage Pipe and Drums, Lyric Opera of the North, and a salsa dance lesson from North Shore Ballroom. The session also included a Northland Events Panel featuring the Duluth Airshow, Bayfront Festival Park, Grandma's Marathon and Bentleyville Tour of Lights. We concluded the day with an overview of the Street Art Initiative presented by President and CEO Shaun Floerke of the Duluth Superior Area Community Foundation. The program is made possible by North Shore Bank, Duluth News Tribune, Minnesota Power, Essentia Health and many day sponsors.





# Calendar

Please register for Chamber events at [www.duluthchamber.com](http://www.duluthchamber.com) or by calling (218) 722-5501.

## January 5

Wednesday

Chamber educational series:  
**Professional Development  
workshop**

### Professional Development Workshop

Topic: "Moving from Employee Connectivity to Employee Belonging," presented by Dr. Bob Randall of The College of St. Scholastica  
11 a.m. to noon  
Zoom webinar



## January 7

Friday



### Finally Fridays Networking Event

7:30 to 9 a.m.  
Location: KBJR 6 and CBS 3, 246 S. Lake Ave.



## January 11

Tuesday



### Let's Do Lunch, Duluth

Topic: "New Year, New View," presented by Mayor Emily Larson of the City of Duluth  
Location: Greysolon by Black Woods, 231 E. Superior St.



## January 12

Wednesday

### Leadership Duluth

Healthcare Day  
9 a.m. to 5 p.m.  
Location: Northwood Children's Services - West Campus  
4000 W. Ninth St.



THE PATIENT.  
ABOVE ALL ELSE.



## January 18

Tuesday



### Ambassador Lunch

Noon to 1 p.m.  
Location: Pizza Ranch, 1600 Miller Trunk Highway  
All Chamber Ambassadors are invited to enjoy lunch and to hear a guest speaker.

### After Hours Networking Event

4:30 to 6 p.m.  
Location: Essentia Health Occupational Medicine -  
Miller Hill Health Plaza, 1600 Miller Trunk Highway



## January 19

Wednesday

Chamber educational series:  
**Small Business Development  
workshop**

### Small Business Development Workshop

11 a.m. to noon  
"Confidently Telling Your Story," presented by Annie Harala and  
Kevin Jacobsen of Story North Productions  
Zoom webinar



## January 27

Thursday



### Fuse 101

4 to 5 p.m.  
Location: to be determined  
Join Fuse Duluth and members of the Fuse Leadership Council for the Fuse 101 happy hour. This orientation will provide discussion of the Fuse program and the professional development benefits of getting involved with Fuse. Free to attend.

# Success!

Frost River (1910 W. Superior St.) celebrates the purchase of On The Limit (2224 W. Superior St.), a screen printing and embroidery business in Lincoln Park.



Great Lakes Aquarium celebrates the grand opening of its new water exhibit, titled "H2O: Watersheds at Work," which features hands-on interactive exhibits (353 Harbor Drive).

Heaven on Earth Wellness Spa celebrates the grand opening of new services, including a toxic-free hair salon (307 E. Central Entrance).



New Scenic Café, located just eight miles from Duluth on the scenic North Shore, celebrates the grand reopening of full-service dining (5461 North Shore Drive).

The grand opening celebration for Northern Lights Insights, which provides on-site and virtual coaching and one-on-one consulting to improve teamwork and business or personal communication styles.



## CHAMBER STAFF



Matt Baumgartner  
President  
(218) 740-3751  
[mbaumgartner@duluthchamber.com](mailto:mbaumgartner@duluthchamber.com)



Martha Bremer  
Director of Fuse  
and Leadership Duluth  
(218) 740-3754  
[mbremer@duluthchamber.com](mailto:mbremer@duluthchamber.com)



Aubrey Hagen  
Director of Membership Development  
(218) 740-3758  
[ahagen@duluthchamber.com](mailto:ahagen@duluthchamber.com)



Chris Johnson  
Director of Marketing & Communications  
(218) 740-3755  
[cjohnson@duluthchamber.com](mailto:cjohnson@duluthchamber.com)



Kathleen Privette  
Director of Events  
(218) 740-3745  
[kprivette@duluthchamber.com](mailto:kprivette@duluthchamber.com)



Lori Steinbach  
Office Coordinator  
(218) 740-3744  
[lsteinbach@duluthchamber.com](mailto:lsteinbach@duluthchamber.com)



## PROFESSIONAL DEVELOPMENT

Chamber educational series:

### Professional Development workshop



**January 5**

Dr. Bob Randall of The College of St. Scholastica presents "Moving from Employee Connectivity to Employee Belonging" (11 a.m. to noon – Zoom webinar).

Chamber educational series:

### Small Business Development workshop



**January 19**

Annie Harala and Kevin Jacobsen of Story North Productions present "Confidently Telling Your Story" (11 a.m. to noon – Zoom webinar).

## FUSE DULUTH

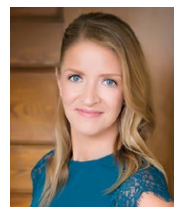
### Fusers Enjoy a Fun, Festive Bentleyville Program

On December 2, Fuse Duluth hosted our final Ignite Your Fuse event of 2021. The session offered attendees an insider's look at the history of Bentleyville Tour of Lights, presented by founder Nathan Bentley. Attendees enjoyed a delicious box lunch provided by Black Woods Catering and the opportunity to dine in the festive, fabulous Glensheen Mansion.

The luncheon was a great opportunity to hear from the amazing man who has brought so much fun holiday cheer to our beautiful Christmas City. Thank you, Nathan, for sharing your story, time and expertise with us!



FUSE DULUTH  
YOUNG PROFESSIONALS



Martha Bremer  
Director of Fuse and Leadership Duluth  
(218) 740-3754  
mbremer@duluthchamber.com

## In Case You Missed It

On November 29, the Chamber celebrated the time and talents of our dedicated Chamber Ambassadors at a fun holiday party. This amazing group greets new members, attends ribbon cuttings and other members' events, and also volunteers at Chamber events. We are incredibly fortunate to have such an outstanding group of leaders supporting our Chamber efforts. For more information or to join the Ambassadors Program, please contact Kathleen Privette at kprivette@duluthchamber.com.



## Promote Your Organization to New and Prospective Residents

Now is a great time to position your organization in front of those requesting information about our area. DuluthChamber.com operates a Relocation Page to include information specific to prospective residents. Members of our Chamber from various sectors relevant to Duluth living – including health care, education, finance and housing – are included within the Relocation Packet to help ease the transition to Duluth.

You, too, can be a part of the relocation packet. This opportunity is \$300 annually, which includes a promotional flyer included in the Relocation Packet, plus logo and contact information directly on our site. For more information about the advertising opportunity within the packet, please connect with me at cjohnson@duluthchamber.com.

Recruiting new hires? In addition to participating in conversations about community growth, our Chamber is a helpful resource to individuals invested in moving to the area or seeking employment. If your organization is recruiting from outside the area, we highly encourage you to send your new or prospective hires a Relocation Packet. These can be downloaded at [www.duluthchamber.com](http://www.duluthchamber.com) or can be requested by emailing me at cjohnson@duluthchamber.com.

Chris Johnson  
Director of Marketing and Communications  
(218) 740-3755  
cjohnson@duluthchamber.com



## Welcome New Members

### Duluth Running Company

Kelcie Drissen  
(218) 728-1148  
1026 E. Superior St.  
Duluth, MN 55802  
[www.duluthrunning.com](http://www.duluthrunning.com)  
Duluth Running Company is a specialty running store centered around inspiring our active community through our in-store product selection, events – and most recently, through our corporate wellness initiative.

### Integrative ReSources LLC

Olaf Kuhlke  
(218) 390-2676  
Duluth, MN 55803  
[www.resiliencysource.com](http://www.resiliencysource.com)  
At Integrative Re-Sources LLC, our passion is to guide people's potential to create meaningful connections. We build frameworks and conversation tools based on the neuroscience, philosophy and psychology of compassion to support our humanity in business.

### Edina Realty - Frances Wittenberg

(218) 728-7700  
1515 London Road  
Duluth, MN 55812  
[www.edinarealty.com/FrancesWittenbergrealtor](http://www.edinarealty.com/FrancesWittenbergrealtor)  
Offer clients' invaluable data to be empowered to make an informed decision. Build helping relationships and help clients achieve their real estate goals, anywhere in Minnesota and out of state.

### Northland Private Asset Management LLC

Lynden D. Medlin  
325 S. Lake Ave., Ste. 707  
Duluth, MN 55802  
[www.northland.wfadv.com](http://www.northland.wfadv.com)  
Manage investment and retirement portfolios for individuals, small businesses and trusts.