



25th Annual
**Duluth
& St. Louis
County** AT THE
CAPITOL

ADVOCACY FOR
NORTHEASTERN
MINNESOTA
PRIORITIES

March 9 & 10, 2022

2022 Priorities

On behalf of Duluth and St. Louis County, Minnesota, thank you for being here.

The COVID-19 pandemic has stressed unique challenges to Northeastern Minnesota, making the 2022 legislative session a critical year to bring forth a unified message. Workforce shortages continue to affect all industries. Healthcare challenges persist with broadband utilization surpassing availability, food insecurity, and access to mental health care. Infrastructure investments are necessary to maintain proper sanitation and economic engines. The education funding has been difficult, buildings are needing repair, staffing is in peril. *And these are just to name a few.*

This Priorities Booklet for Duluth and St. Louis County was created to detail the needs of our region and share the successes of our community.

Available to you this year is a digital Priorities Booklet, designed for optimal interaction:

- Navigate through the Table of Contents.
- Follow the links to continue reading about each entity and priority.
- Engage with our sponsors by visiting their websites.
- Locate easy access to D&SLC Event information.
- Share our message on social media.

We look forward to connecting with you and sharing our stories.

Thank you for your continued support.

DULUTH AND ST. LOUIS COUNTY REGIONAL REPRESENTATIVES

MINNESOTA SENATE



District 03
Sen. Thomas M. Bakk
 328 Capitol
 St. Paul, MN 55155
 (651) 296-8881



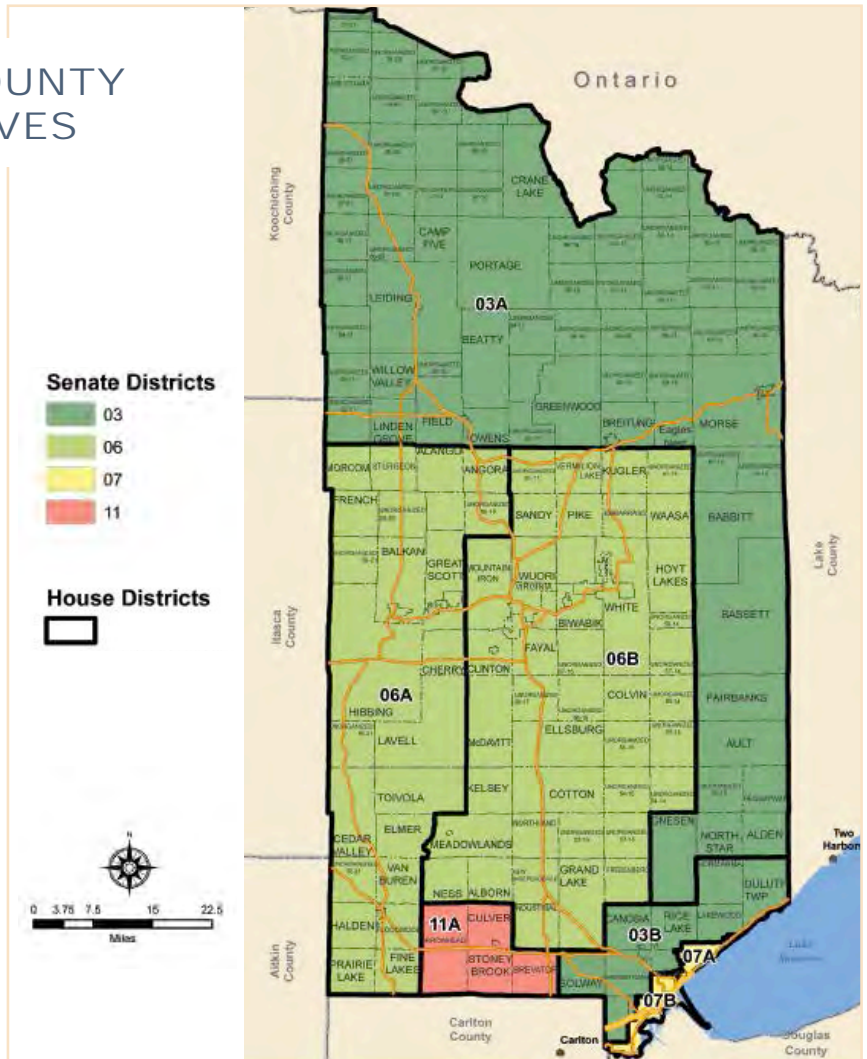
District 06
Sen. David J. Tomassoni
 328 Capitol
 St. Paul, MN 55155
 (651) 296-8017



District 07
Sen. Jennifer A. McEwen
 2417 Minnesota Senate Bldg.
 St. Paul, MN 55155
 (651) 296-4188



District 11
Sen. Jason Rarick
 3411 Minnesota Senate Bldg.
 St. Paul, MN 55155
 (651) 296-1508



MINNESOTA HOUSE OF REPRESENTATIVES



District 03A
Rep. Rob Ecklund
 409 State Office Bldg.
 St. Paul, MN 55155
 (651) 296-2190



District 06A
Rep. Julie Sandstede
 411 State Office Bldg.
 St. Paul, MN 55155
 (651) 296-0172



District 07A
Rep. Jennifer Schultz
 473 State Office Bldg.
 St. Paul, MN 55155
 (651) 296-2228



District 03B
Rep. Mary Murphy
 343 State Office Bldg.
 St. Paul, MN 55155
 (651) 296-2676



District 06B
Rep. Dave Lislegard
 413 State Office Bldg.
 St. Paul, MN 55155
 (651) 296-0170



District 07B
Rep. Liz Olson
 471 State Office Bldg.
 St. Paul, MN 55155
 (651) 296-4246



District 11A
Rep. Mike Sundin
 417 State Office Bldg.
 St. Paul, MN 55155
 (651) 296-4308



MEET US AT THE GRAND RECEPTION

Legislators and Legislative Staff are invited to the Grand Reception to meet Northern Minnesota stakeholders and discuss developments in the region. Visit vendor booths, enjoy local food and beverages, and meet community leaders.

WEDNESDAY, MARCH 9, 2022

4:30pm - 8:00pm

InterContinental St. Paul Riverfront Hotel

Free to Attend

[Click to RSVP](#)

2022 REGIONAL PRIORITIES

Greetings	4
St. Louis County	7
City of Duluth	9
City of Hermantown	11
City of Rice Lake	13
St. Luke's	15
Essentia Health	17
Lake Superior College	19
University of Minnesota Duluth	21
The College of St. Scholastica	23
Duluth Public Schools - ISD 709	25
Western Lake Superior Sanitary District	27
Duluth Seaway Port Authority	29
Duluth Airport Authority	31
Armory Arts & Music Center	33
Enbridge Energy Company	35
Minnesota Power - An ALLETE Company	36
Thank You Elected Officials & Event Stakeholders	38

GREETINGS FROM ST. LOUIS COUNTY

Thank goodness for Duluth & St. Louis County at the Capitol Days! At a time when it's easy to feel divided and weary, events like this are the perfect reminder that we are stronger together! We can have differences, but we know we share a passion for helping improve our communities and the lives of the people we call neighbors and friends.

St. Louis County is known for its outdoor beauty – from Lake Superior to the Boundary Waters Canoe Area Wilderness. We are blessed with wide open space and endless miles of hiking, biking, ATV and snowmobile trails.

Through all of the challenges of this pandemic, we have seen our greatest success when we work together. We've listened to needs, brainstormed solutions, formed partnerships, shared resources, and made real differences.

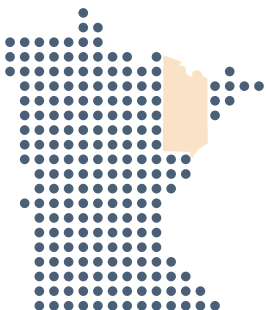
Yet we know some in our communities are struggling more than others. The mental health impacts of the last few years are real and cannot be ignored.

We look for support from St. Paul to better serve all in our great county. And we thank all of you for the shared energy that reminds us that better days are ahead.



A handwritten signature in black ink that reads "Paul McDonald". The signature is fluid and cursive.

Paul McDonald,
Chair of the St. Louis County Board



GREETINGS FROM DULUTH

On behalf of the City of Duluth and our incredible staff, welcome to one of my favorite events of the year: Duluth & St. Louis County at the Capitol Days.

We all know the last two years have been difficult, and 2022 is already throwing us some big challenges. One thing that remains clear despite it all: our communities, residents, businesses, and neighbors are committed to getting through this. We look out for each other. We do everything we can, when we can, to ensure that even in the most difficult times, we all make it through. If you live in Duluth or St. Louis County, you belong.



Duluth & St. Louis County Days are always about those values. People coming together to advocate for a better future. Together. This year continues to look, feel and just *be* different. But that doesn't mean that our values are. And it doesn't change our shared *why* for showing up every day to work and life. If anything, the importance of our *why* is on full display. Struggles among families are real. The unknown is around every corner. The razor-thin line of employment is real.

We are real. Every year we've heard the wonderful story of how this event got its plucky start. A small group of determined individuals set out to St. Paul to advocate for and on behalf of Duluthians. And this year we're all excited to welcome the Chamber's new President, Matt Baumgartner. Matt has already brought so much to the table and I am eager to continue working with him, as I'm sure you all are too, to once again come together with that same shared goal.

There are myriad projects and issues worth advancing, and I have never been more proud to stand virtually beside you all in making our cases to improve our communities.

Thank you to the Duluth Area Chamber of Commerce, to our State Legislators, to the State of Minnesota, to all of our partners in this work, and to all of you for everything that you do.

Thank you,



Mayor Emily Larson

STRENGTH IN NUMBERS. STRENGTH IN RESOURCES.

What's so significant about St. Louis County?

Here are just a few statistics to consider:



#1 in size – covering 7,000 square miles, we are the largest county in Minnesota. Yes, our northern border is Canada, but our county seat is in Duluth.

900,000 – acres of county-managed public lands (almost the size of Rhode Island!) These are tax forfeited lands that the county maintains for the state. For the most part, this land is open to the public for hunting, fishing, hiking, camping and other forms of recreation.



1,000,000 – tree seedlings planted annually. And that's just on the tax forfeited land we manage. It's part of why timber remains one of our major industries.



#6 in population – with 200,000 people, we have the most residents of any county outside the Twin Cities metro area.



#1 in lakes – of Minnesota's 10,000 lakes, 890 of them are in St. Louis County. Compared to other counties, we have the second highest number of watercraft trailer launches and the highest number of watercraft trailer parking spaces. *Enjoy the water!*



85% of the country's domestic iron – comes from Minnesota mines, the majority of which are located in St. Louis County. *State of mine!*



The people and industries of St. Louis County proudly and responsibly make the most of the resources in our region. And the state is better for it.

stlouiscountymn.gov



TOGETHER. WITH CARE.

St. Louis County is blessed with abundant natural resources, culture and history. And people! Of these, we work hard to serve our citizens; and the rest we work to preserve. This is clear in our legislative priorities including bonding requests:



**St. Louis County Regional Landfill—
Leachate collection system:**

\$4.5 million is requested to expand and relocate the leachate management ponds at the regional landfill. St. Louis County is investing in advanced filtration technologies, including an engineered wetland treatment system to reduce PFAS and other contaminants leaching into the groundwater.

Reform PILT funding formula:

Payment in Lieu of Taxes is supposed to help counties that contain state-owned land that do not pay property taxes. However, counties with the most PILT lands, receive the least funding per acre. A recent study showed that if parity is restored, St. Louis County could receive up to \$4.6 million to offset levy impacts and support key initiatives.

St. Louis County Heritage & Arts Center (The Depot):

The Legislature awarded \$1.5 million for Phase 1 of improvements to the 129-year-old Depot. Thank you! Now an additional \$3.825 million is needed for mechanical, electrical and plumbing upgrades, as well as life/safety improvements. More than 110,000 people visited the St. Louis County Depot in 2021, despite it being closed to the public the first quarter due to the pandemic.



Preserve mental health funding for our region:

The need for mental health services has never been greater, yet our region stands to lose significant funding to support existing services. The Department of Human Services is developing a new Adult Mental Health Initiative (AMHI) funding formula and eliminating funds previously directed to the region. Without these funds, the county would face the challenge of reducing services or shifting the cost to taxpayers.

From the County Administrator

"This pandemic forced us to rethink service delivery, while at the same time highlighting new and intensified needs among our citizens and businesses. As we continue to adapt our work, one constant remains. We are better and stronger when we work together. This is true in the partnerships within our communities, and it is true as we work to fulfill the state's mandated services. Thank you for your continued partnership!"

Kevin Z. Gray, St. Louis County Administrator





DULUTH AFFORDABLE HOUSING COALITION
 A Coalition of Duluth Organizations Concerned About
 Housing for Low Income People

Proud Supporters Of:

- 2022 Homes for All (H4A) Agenada
- 2022 Homeownership Minnesota (HOM) Agenda



1ROOF
COMMUNITY HOUSING
 12 E. FOURTH ST.
 DULUTH, MN 55805
 218-727-5372

We Make Home A Better Place. | 1ROOFHOUSING.ORG

maurices
 feel good fashion for real life™

Proudly headquartered in Duluth, MN, maurices operates 900 stores in hometowns across the U.S. and Canada and offers even more to love at maurices.com.

mayoclinic.org

The highest level of care on four wheels.

Mayo Clinic Ambulance Service

MAYO CLINIC

© 2021 Mayo Clinic

THE TV & FILM PRODUCTION INDUSTRY IS HERE

UMFO **CATALYST**
 UPPER MIDWEST FILM OFFICE STORY INSTITUTE

Economic, workforce & community development powered by the arts

dsgw
 ARCHITECTURE
 enriching communities

(218) 727-2626
dsgw.com

Proud to contribute to the growth of our region. Call us at 1-218-724-6466.

DULUTH BUILDING & CONSTRUCTION TRADES COUNCIL
 AFL CIO
 ★ ORG. MARCH 27, 1905 ★

The City of Duluth is continually grateful to work with legislators and the Administration to safeguard funding for Local Government Aid (LGA). To the extent practical, Duluth seeks increased funding for the LGA formula and maintaining a formula which does not reduce payments to the City.

The City of Duluth's top 2022 bonding priorities:

- Secure state funds for improvements and upgrades to the Spirit Mountain Recreation Area
- Secure state general obligation bond proceeds for improvements and upgrades to the Duluth Aerial Lift Bridge

The City of Duluth also supports the following local and regional initiatives:

- Funding for housing projects as proposed by the Homes For All Coalition which calls for general obligation bonds for public housing rehabilitation and housing infrastructure bonds for construction of affordable housing through the Minnesota Housing Finance Agency
- Policies to help reduce and prevent evictions; programs to provide emergency and long term rental assistance, identifying and protecting Naturally Occurring Affordable Housing, increasing affordable homeownership development through Minnesota Housing programs such as the Economic Development and Housing Challenge Program, state matching dollars for local housing trust funds; and policies and funding to combat and prevent homelessness
- A reduction in the class tax rate impacting the net tax capacity of parcels at the airport to stimulate local economic development
- Increased funding for Department of Employment and Economic Development programs such as the Minnesota Investment Fund, the Job Creation Fund and the Redevelopment Account and support for local businesses that may apply for these funds
- State funds to establish a customs facility to develop a market for cruise ship industry in the Great Lakes
- State funds to facilitate the redevelopment of Lot D
- State general obligation bond proceeds for the Port Development Assistance Program
- State funds for redevelopment and upgrades to the Armory
- State funds for programs and incentives to expand and attract opportunities for film, television, and music production in Minnesota
- State funds to improve access and affordability of child care throughout Minnesota
- Increased funding for library programming and infrastructure
- State funds to remove and replace lead service lines still in use throughout Minnesota
- State funds to address the future of Highway 61 in downtown Duluth
- State funds to improve access to universal, high quality broadband services for all Minnesotans
- State funds to support local government efforts to remove and replace trees infested by emerald ash borer and development of markets for products utilizing the resulting wood waste
- A statewide policy requiring employers to provide safe and sick time for employees
- Efforts to meaningfully address racial and economic disparities as the state recovers from COVID related economic strain





Momentum: Minnesota Made

AND 10,000+ REASONS TO TAKE THE NEXT STEP

- ✓ Continued success with the Essentia Wellness Center investment
- ✓ Continued population growth; now more than 10,000 residents
- ✓ Community Recreation Initiative referendum set for 2022 vote
- ✓ Legislative investments continue to support this momentum

hermantownmn.com

TKDA

218.724.8578

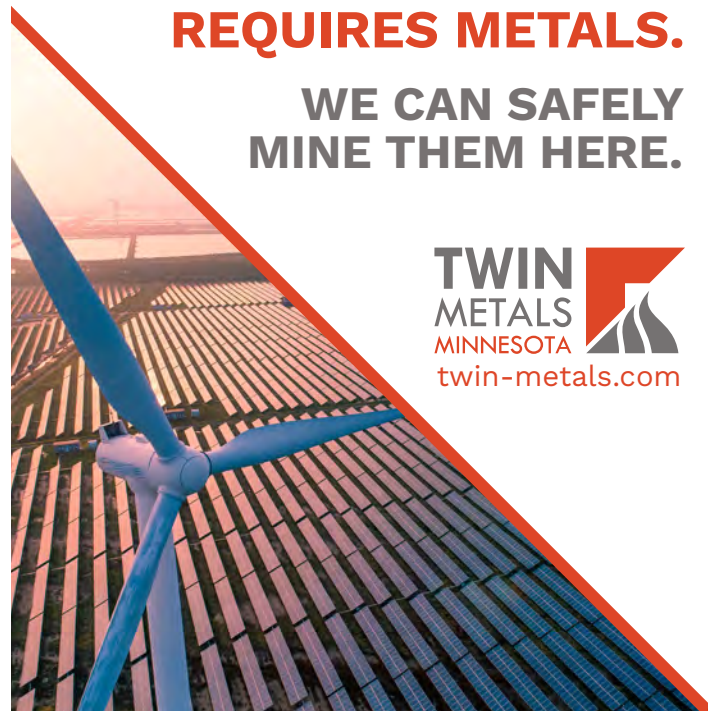
THE VOICE
FOR REAL
ESTATE
IN NORTHERN
MINNESOTA
& WISCONSIN



- Local Resource for Market Statistics & Trends
- Advocate for Private Property Rights & Property Ownership
- Supporter of Our Local Community Through Outreach & Member Engagement

**COMBATING
THE CLIMATE CRISIS
REQUIRES METALS.**

**WE CAN SAFELY
MINE THEM HERE.**





CITY OF HERMANTOWN

A growing population that continues to rise? Check.
A family-oriented community that’s also incredibly business-friendly? Check.
Proof of utilizing state support to benefit the entire region? Check.

Few communities check all three boxes, but the City of Hermantown does. And as more people choose to make it their hometown, Hermantown is becoming even more of an aspirational community within St. Louis County.



One of northern Minnesota’s few continuously-growing cities, Hermantown landed at 10,221 in the 2020 Census, eclipsing 10,000. Since then, more than 100 additional residential units have come online and been filled, with more being proposed.

SIMPLY PUT, PEOPLE WANT TO LIVE, WORK, AND PLAY IN HERMANTOWN.

There’s an array of reasons for this steady migration, from a top-performing school district to high-quality local government services. Hermantown’s growth doesn’t show signs of slowing down.

Rather than use that growth as insulation, the community has leveraged legislative support to attempt to improve health outcomes in the region. An initial state and local investment led to the creation of the Essentia Wellness Center (EWC) in 2019 – a series of partnerships within a facility focused on health, wellness, and community connection. The EWC, despite the pandemic, has proven itself an asset to the region by achieving five-year user goals in less than two years!

Hermantown’s next step to improve regional health outcomes is the Community Recreation Initiative on the 2022 ballot. A half-percent investment of sales tax would create a regional trail system, improve a flood-prone park, and provide needed expansion regarding access to indoor ice as Hermantown’s single arena is well beyond capacity.

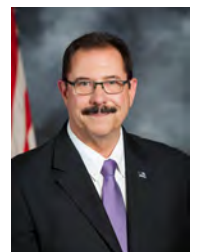
Originally proposed pre-pandemic, additional completion costs associated with the initiative are worthy of strong consideration for additional legislative support – knowing these types of investments pay off quickly in the region served by Hermantown.

There is momentum in northeastern Minnesota, propelled by Hermantown. We are excited to see what we can accomplish next with further legislative support and our voter’s efforts.

From the Mayor

“Hermantown continues to be a place where both families and businesses seek to be a part of and are proud to call home. Our reputation as a pioneer in the region continues to grow due to the high-quality life experience that our community offers. The Minnesota Legislature has seen its investments in Hermantown positively impact all of Southern St. Louis County. This is why we are excited for what the Community Recreation Initiative can mean for so many people in the region.”

Mayor Wayne Boucher
City of Hermantown





Show your support for
NLX Passenger Rail!

TAKE ACTION TODAY!

NorthernLightsExpress.org
Minneapolis — Duluth



PRESERVING OUR FUTURE

THROUGH SMART PLANNING

Rice Lake has been a City since 2015 and has been working to balance our rural lifestyle with economic development, in an effort to provide additional services to our community. With the addition of Kwik Trip in the fall of 2018, Boomtown Brewery in February of 2021, and the newly completed water main extension, Rice Lake is poised for commercial development along the Rice Lake Road Commercial Corridor. By working with St. Louis County, the State, and other organizations, Rice Lake is putting together an infrastructure package to promote development while protecting the rural character in the rest of the community.

www.ricelakecitymn.com
218-249-0733



CELEBRATING
150 YEARS
1870—2020



SHERATON
EST. 1937

Duluth's
Gathering Place



Discover the Economy
of the Future

Natural Resources
Research Institute

UNIVERSITY OF MINNESOTA DULUTH
Driven to Discover



CITY OF RICE LAKE: PRESERVING OUR FUTURE

Since Rice Lake incorporated as a city in 2015, we have been working at leaving behind the township mentality and moving towards city priorities. Rice Lake's recently updated Comprehensive Plan's theme was Preserving our Future through smart planning. Our citizens have shown overwhelming support of remaining rural in character while providing a few additional services and amenities to our community. We have been working with St. Louis County and the Metropolitan Interstate Council to create a transportation plan for the Rice Lake Commercial Corridor which will allow for additional commercial growth within our community.



Rice Lake City Hall
4107 W Beyer Rd
Rice Lake, MN 55803
218-721-3778
www.ricelakecitymn.com

UTILITY WATER LOOP AND EXTENSION

Rice Lake received \$1 million from the State in 2020 for a sewer and water extension on Rice Lake Road. This allowed for the extension of the water main, which was completed in November 2021, but not the sewer main. We are requesting \$1.5 million from the State to complete the sewer main extension, including a lift station, and to close a water loop on Martin Road. This project will get the City poised for development along the Rice Lake Commercial Corridor thus allowing for additional services and amenities in our community and creating a larger commercial tax base to help alleviate the tax burden on our homeowners.

BECOMING BROADBAND READY

Rice Lake also suffers from slow, unreliable internet throughout much of the community, this has become more apparent due to the "Stay at Home" restrictions put in place due to COVID-19. We have partnered with the Blandin Foundation and CTC to complete an engineering study for preliminary costs of providing Fiber-to-the-Home. These costs came in at \$12 million, which we will use to seek additional funding to construct the fiber network. Please support funding for the Border-to-Border grant program to help communities like Rice Lake provide high speed internet to its residents and businesses.



Rice Lake City Park

From the Mayor

"The City of Rice Lake looks to continue working with our Legislative Leaders and the Governor's Office in advancing the needs of both the city's infrastructure and municipal projects as well as always being cognizant of the fact that we are one small piece of the Head of the Lakes Region. We have made great strides in this partnership in opening doors financially, legislatively, and cooperatively with both county and state governance and look forward to continued collaboration."

Mayor John Werner, City of Rice Lake





Meet the New Future of St. Luke's

St. Luke's Health Forward Initiative takes a staged approach to expansion, pairing the latest technologies with the highest quality care, to meet the needs of today and tomorrow. Our next phase will feature private rooms throughout the hospital, in addition to 56 new critical care rooms. We're committed to developing our campus in a way that meets the needs of our region and consistently exceeds expectations.

THE PATIENT.
ABOVE ALL ELSE.®



slhduluth.com

915 E. 1st Street, Duluth, MN 55805 | 218.249.5555

Dear Legislators,

Despite the challenges of the COVID-19 pandemic, St. Luke's has steadfastly provided quality care for our patients, and we've come through stronger than ever. Looking forward, our focus remains on providing the highest quality care, while offering the best experience for our patients. To do that, we must be adaptable, cultivate our current and future staff, and continue improving access to care.

We have a solid plan to meet these needs, and we are asking for your support in the following ways:

- 1. Eliminate delays in background checks for employees and state licensing for physicians and nurses.** Delays seriously impact our ability to onboard staff. Your assistance to improve the process and shorten the timeline will make real-world positive impacts.
- 2. Allocate funding earmarked for frontline workers during the pandemic.** This money is well deserved. And given the state's budget surplus, we encourage you to consider increasing the amount allotted to this group who has given so much to our communities.
- 3. Support workforce development for the next generation of healthcare workers.** We urge you to increase funding to expand educational programs. It's also vital the state works with healthcare organizations to forgive or cancel educational loans for new hires, offer scholarships, or prepay education for persons interested in healthcare careers.



We will soon be launching the next phase of the Health Forward Initiative, our campus redevelopment plan, with a renewed focus on increasing critical care capacity, patient experience and access. We are grateful for your support of our Medical District and funding our new parking ramp project, which will be built in 2023.

We look forward to your ongoing support as we continue providing the highest quality health care through trusted partnerships with our patients, employees and communities. Thank you for your commitment to the people of our region and all of Minnesota.

Sincerely,

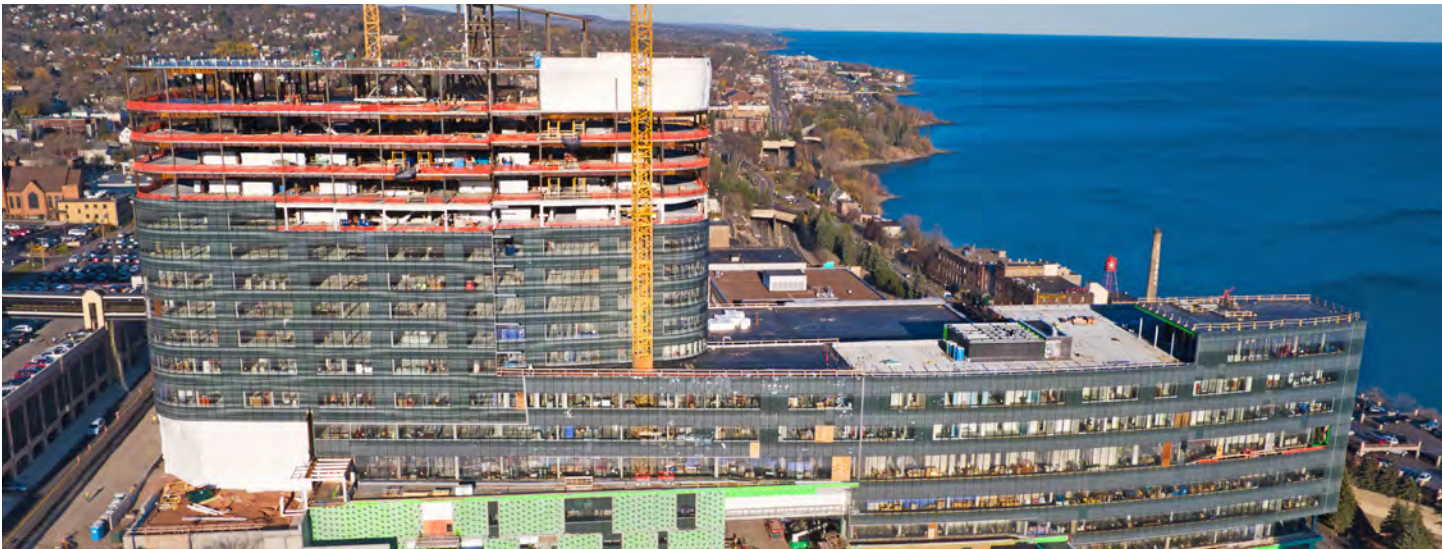


Eric Lohn
Co-President/CEO
Chief Financial Officer



Nick Van Deelen, MD
Co-President/CEO
Chief Medical Officer





TOGETHER, WE'RE BUILDING TOMORROW'S HEALTH CARE

Strong partnerships transform our community. Surpassing a milestone of more than 1 million worker hours safely building a replacement for St. Mary's Medical Center and new clinic space, our new Essentia Health downtown Duluth campus illustrates what's possible when we work together.

We're grateful for the many skilled tradespeople, community and state leaders and construction partners – 17 percent of whom are female, minority, disabled or Veterans - who are contributing to this transformational project. We're grateful for our caregivers who serve patients every day with safe, quality care. And we're grateful for this opportunity to create an inviting and healing environment for our patients and their families.

To learn more, go to EssentiaHealth.org/VisionNorthland



Essentia Health

OUR MISSION: WE ARE CALLED TO MAKE A HEALTHY DIFFERENCE IN PEOPLE'S LIVES
OUR VALUES: QUALITY | HOSPITALITY | RESPECT | JOY | JUSTICE | STEWARDSHIP | TEAMWORK



Essentia Health

ESSENTIA HEALTH



Thank you for all you've done and continue to do to support the challenges the COVID-19 pandemic has brought to healthcare. Essentia Health's legislative priorities have been deeply influenced in response to these challenging times.

TELEHEALTH

We urge federal and state governments and private health insurers to take the necessary action to increase access to telehealth. Unfortunately, we know rural areas throughout Minnesota lack access to high-speed internet and are prevented from receiving the full benefits of telehealth. We support continued state and federal efforts to increase access to reliable and affordable high-speed broadband throughout Minnesota.



WORKFORCE RESOURCES

Essentia continues to call for additional state and federal resources to support recruiting, retaining and growing a health care workforce. We support streamlining the licensure process by utilizing more timely and efficient background processes and adopting licensure compacts, such as the Nurse Licensure Compact, which allows for one multistate license. There are currently 38 states that have joined the nurse licensure compact, and we hope Minnesota will join too.

CARE BEYOND OUR WALLS

Essentia is committed to addressing the behavioral and socioeconomic constraints that affect people's health, along with racial and ethnic health disparities. We advocate or continued support for food insecurity programs. We ask our patients about financial, transportation, housing and food insecurity, then connect them to valuable community resources. Making an impact on the social determinants of health improves quality of life and reduces health care costs for all.

VISION NORTHLAND

Our Vision Northland project will welcome patients in third quarter 2023. The project will have provided more than 5,600 onsite construction jobs and 3,600 off-site construction-related jobs. Our gratitude goes to all our state lawmakers and city leaders who have helped make this a reality.

DULUTH FAMILY MEDICINE

Essentia encourages increasing state funding and support for the Duluth Family Medicine Residency Program, which develops physician leaders in rural communities.

From the CEO

"As one of Minnesota's largest health care systems privileged to care for communities in Minnesota, Wisconsin and North Dakota, Essentia Health is committed to working with you and others to build the healthy, vital communities our citizens want and deserve. When we come together, we do great things for those we serve."



Dr. David Herman,
Chief Executive Officer,
Essentia Health



Preparing tomorrow's workforce • lsc.edu



LAKE SUPERIOR COLLEGE

Lake Superior College (LSC) is a comprehensive two year community and technical college, nationally recognized for quality and affordability, offering nearly 100 programs including liberal arts and sciences courses for transfer, technical and trade programs, allied healthcare and nursing programs and continuing education and customized training for business and industry.



2022 LEGISLATIVE REQUEST

LSC's Manufacturing Workforce Labs Predesign Bonding Project received strong bi-partisan support in the 2020 legislative session, and we are grateful for the support of our regional delegation, Governor Walz, and many community partners who helped advocate for the much needed project. Given shifts in priorities during that session, few Minnesota State projects received funding and LSC's project was no exception. However, we remain steadfast in our mission to ensure LSC and Duluth remain the premier manufacturing training destination in the region.

\$1M in planning dollars will allow LSC to begin the process of relocating, expanding and enhancing LSC's manufacturing program to continue to help meet regional workforce needs.

LSC's current manufacturing program is offered in a remote, downtown campus. The program has outgrown the leased space, which needs upgrading and poses challenges including transportation, parking, and overall access. This project would relocate the program back to LSC's main campus enhancing the labs, improving the student services and support, and reducing operating costs by at least \$165,000 annually.

PROJECT DETAILS

Renovate 27,900 of square feet into state-of-the-art manufacturing, welding and electronic labs. Add 12,360 square feet for machine tool lab. By relocating the manufacturing program to LSC's main campus, we enhance the student experience by providing better access to services such as the library, tutoring center, and auxiliary services which are all located on the main campus. With a housing project in the works near main campus, this would also help alleviate the transportation issues associated with the downtown campus. This project would also locate the manufacturing programs next to related electronics programs paving the way for a new Robotics and Automated Manufacturing program. LSC is committed to maintaining a presence downtown through more flexible course offerings.

From the President

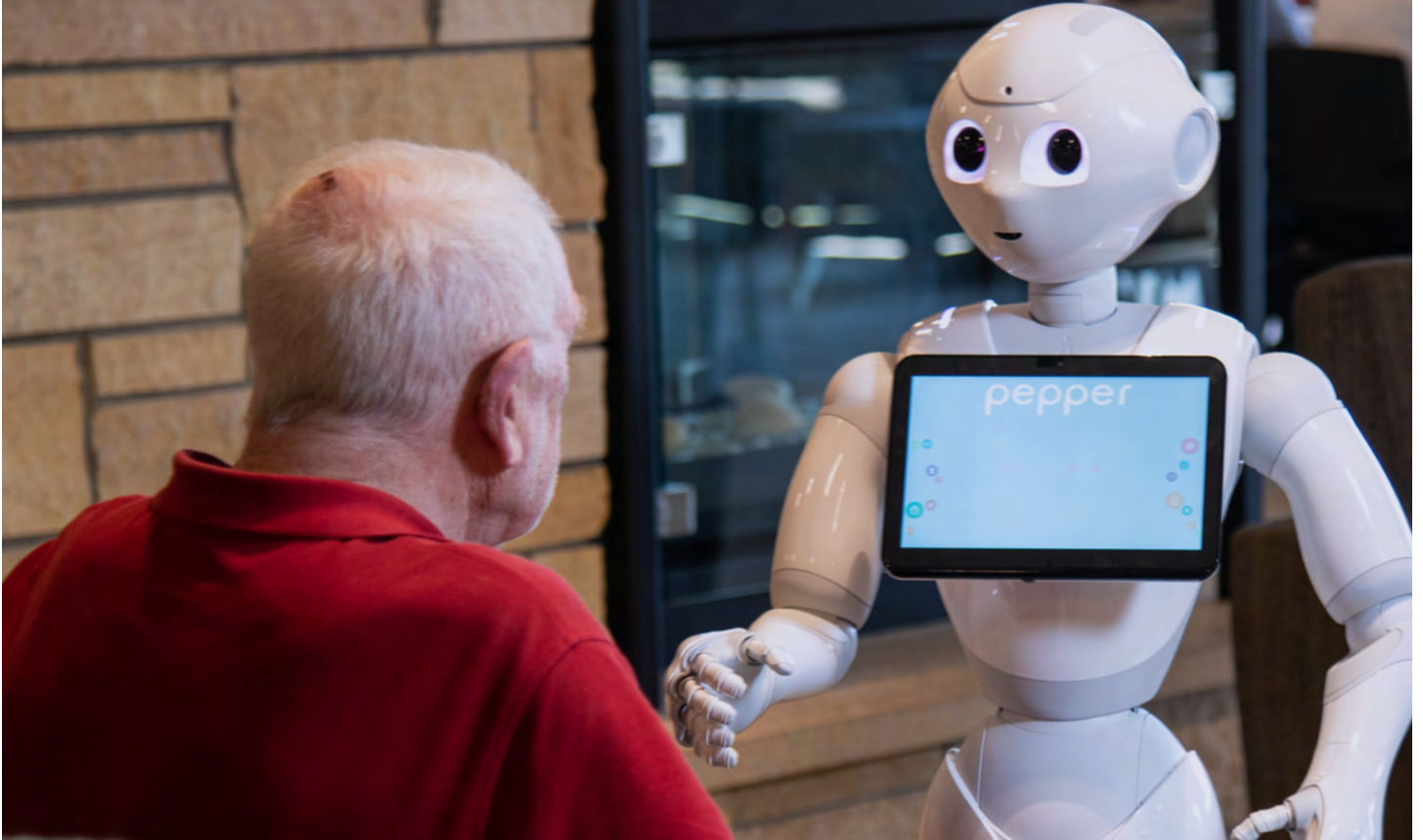


"Thank you for your support for Lake Superior College and the Minnesota State system. In order to continue to meet growing demands for our regional manufacturing workforce, LSC continues to advocate for bonding request of \$1M in planning funding for our Manufacturing Workforce Labs. This would allow us to begin the process of relocating, and expanding, our manufacturing program from downtown to LSC's main campus. This project directly benefits students and our regional economy by continuing to prepare the pipeline of trained talent for regional employers."

Dr. Patricia L. Rogers, President
Lake Superior College

For more details on LSC's legislative request, please visit:
www.lsc.edu/bondingrequest

RESEARCH. FOR SMARTER ROBOTICS.



ELDER CARE

An aging population needs comprehensive care. Personalizing and optimizing that care takes research.

Dr. Arshia Khan's computer science research uses robotics to augment care for dementia patients and extend their independence.

research.d.umn.edu

UMD

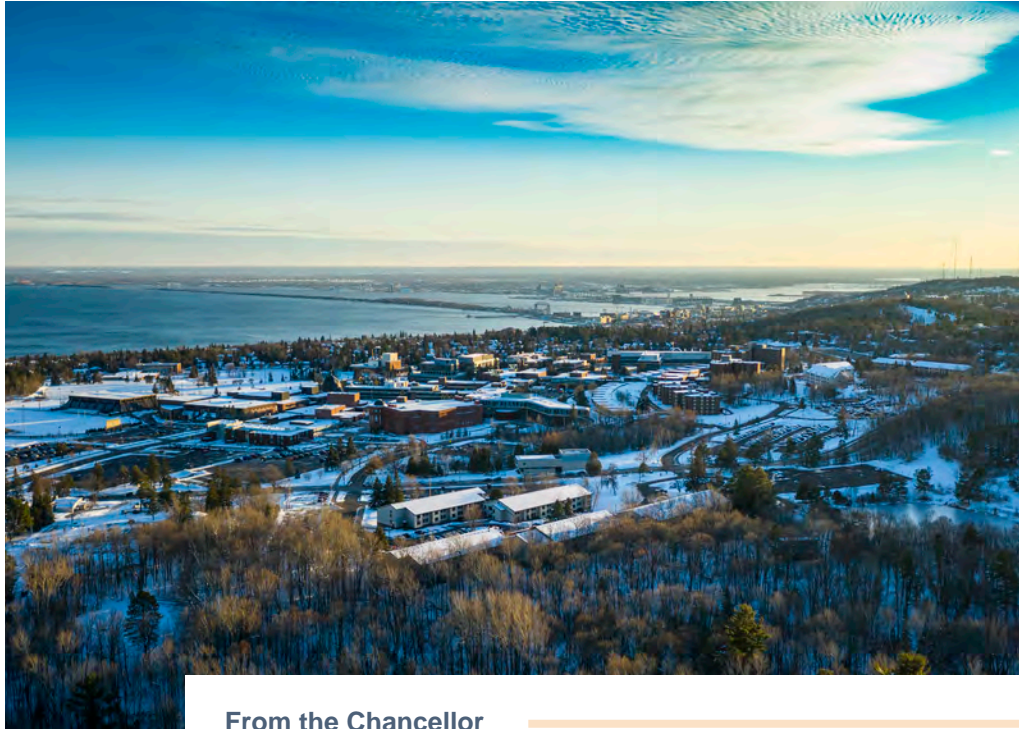
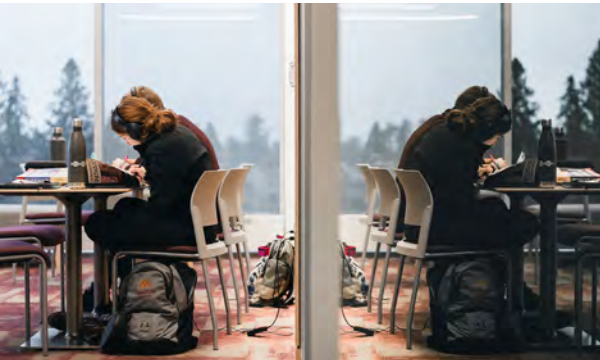
UNIVERSITY OF MINNESOTA DULUTH
Driven to Discover



UNIVERSITY OF MINNESOTA DULUTH
Driven to Discover™

UNIVERSITY OF MINNESOTA DULUTH

University of Minnesota Duluth graduates are prepared for the challenges of today and tomorrow. From engineers, to teachers, to community leaders, and more - our graduates are prepared to fulfill workforce needs across the state. UMD also conducts impactful and meaningful research to meet the needs of our society and find innovative solutions.



From the Chancellor

“We are grateful for our strong and supportive legislative leaders and appreciate your support. Investing in higher education is an investment that gives back for decades. UMD continues to innovate and adapt, providing a high-quality educational experience for our students.”

Dr. Lendley C. “Lynn” Black, Chancellor
 University of Minnesota Duluth



2022 LEGISLATIVE PRIORITIES

We appreciate your support for the legislative priorities of the University of Minnesota System, which include:

\$1.6 million in design funding to renew an existing facility and improve educational opportunities in computer science and other science programs.

\$400 million for Higher Education Asset Preservation and Replacement projects systemwide. This funding is used to maximize the effectiveness and life of our current facilities. For UMD, this includes \$35.8 million in projects.

Funding to enhance safety, security, and sustainability, including \$10 million for Natural Resources Research Institute.

Support for student success, student scholarships, and advancing the quality of healthcare and access.

UMD BY THE NUMBERS

9,884 students Fall 2021

\$500 million regional annual economic impact

85% of students are from Minnesota

50,404 alumni throughout Minnesota

87 undergraduate majors

24 graduate programs

thank you



Thank you, Minnesota legislators, for helping our students transform the world.

This academic year, 32% of full-time undergraduate students received Minnesota State Grants.

Our students are future educators, caregivers, healthcare professionals, artists and business thought leaders who will go on to make a difference in their communities.

css.edu



The College of
St. Scholastica

Since 1912, The College of St. Scholastica has been preparing graduates with the intellectual and moral preparation for responsible living and meaningful work. We aspire to be a diverse and inclusive community that develops and sends forth thoughtful leaders who are committed to serve and transform their communities.



The positive effects of this transformation are felt statewide. St. Scholastica offers programs in Duluth, the Twin Cities, St. Cloud and Grand Rapids, among other sites. Bachelor's, master's and doctoral-level education is available in a variety of traditional, accelerated, hybrid and fully online modalities. And graduates fare well – for the second year in a row, we have been honored as a Top Performer on Social Mobility by U.S. News and World Report.

Throughout its 110-year history, our Benedictine institution has helped students who face barriers to higher education. This is evident in current demographics: 18% of students are from diverse ethnic and racial backgrounds, 30% of undergraduates have family incomes below \$50,000, and nearly one-third of undergraduates are first-generation college students. In light of these demographics, the Minnesota State Grant Program provides critical assistance to our students.

In turn, St. Scholastica plays a significant role in Minnesota's workforce development. We are a major provider of healthcare workers, with the largest private nursing program in the state as well as growing offerings in physical therapy, occupational therapy and physician assistant studies. Just this year, the College celebrated a \$1 million dollar expansion to our nursing space facilities in St. Cloud. We recognize, now more than ever, the importance of investing in the region's future healthcare workers.



From the President

"I am grateful to Gov. Tim Walz and our state legislators for helping keep college accessible to Minnesota's low- and middle-income students by supporting the State Grant program, particularly during this time of the pandemic and the economic impact it has had on families. This wise investment increases the number of students who can afford to attend college at both private and public institutions and ensures a strong workforce for the future. Thank you for this vital support!"

Dr. Barbara McDonald, President
The College of St. Scholastica



**Engage.
Achieve.
Succeed.**
*Every Student,
Every Day*

**ISD 709 Duluth
Public Schools**
Learn more www.ISD709.org

Building a future where all living things thrive together.



Thank you for your support!



BUILDING COMMUNITY IN NORTHERN MINNESOTA
FOR NORTHERN MINNESOTANS BY NORTHERN MINNESOTANS

P&R COMPANIES
prproperties.org

JAMAR
POWERED BY **API Group**

218 628 1027 • jamarcompany.com • [@thejamarcompany](https://www.instagram.com/thejamarcompany)

APEX
gets business

APEX drives business development in northeast Minnesota and northwest Wisconsin.

Agile and connected, our experienced team aligns with the needs of your business.

Attract **Expand** **Retain**

LET'S GET DOWN TO BUSINESS
info@apexgetsbusiness.com | 218.740.3667
APEXgetsbusiness.com | Duluth, MN

Great Lakes Education

H2O
NEW EXHIBIT

NOW OPEN
WITH SUPPORT FROM

OPEN DAILY 10 - 6 • DULUTH, MN • GLAQUARIUM.ORG

In 2022, we are hopeful that the Legislature will help districts, like Duluth, with building projects to exempt sales tax on material and supplies, potentially saving hundreds of thousands of dollars. We are also again asking the Legislature to help the district resolve issues with the special education funding gap that occurred between 2016 and 2019.

With the state having a significant budget surplus, we are also hopeful that the Legislature will invest more money into basic education funding.

WE ARE ASKING FOR:

A construction sales tax exemption on materials and supplies used in and equipment incorporated into the construction of the district’s administrative and transportation facility.

A one-time payment of \$5.8 million to fill the gap that was created by the artificially low base created in FY16-FY19 under the new special education formula.



From the Superintendent

“We are grateful for critical funding to support student learning in challenging times. Furthermore, the Duluth Public Schools wishes to thank our legislators for successfully advocating for us in passing the legislative initiative that has allowed the district to move toward redevelopment of both the Historic Old Central High School and Central High School on the hill. This is allowing the district to save millions of dollars on facilities in the coming years and to reinvest those dollars into educating our students.”

John Magas, Superintendent
Duluth Public Schools



OTHER PRIORITIES INCLUDE:

Increased State Aid for Public Education: We request that the state significantly increase and stabilize funding for Minnesota’s local public education systems and link the basic education funding formula to annual increases to inflation.

Special Education: Continue to freeze special education cross-subsidies in place for each school district. Support a single special education formula that is stable and equitable, and consistent. Duluth Public Schools continues to request that the state of Minnesota help cover the district’s special education losses of \$5.8 million dollars between FY16-FY19.

Compensatory Revenue: Allow school districts to use 2019 compensatory pupil counts to address impacts brought on by the COVID pandemic and allow for additional options to meet free and reduced-price lunch eligibility, which is the primary factor in determining compensatory revenue.

Operating Levies: Allow school board renewal of existing and future operating levies.

Long Term Facilities Maintenance (LTFM): Remove the per pupil limit and broaden the eligible uses.

Reduce Mandates: Cease adding new unfunded mandates and fund current mandates already in law.



We can't afford to settle for less than the best.

Invest in Wastewater Infrastructure to protect and preserve Minnesota's waters.

Communities across Minnesota are in critical need of funding for wastewater infrastructure projects to maintain public health and a clean environment.

Invest now to ensure ongoing affordable, stable, and reliable wastewater treatment. Minnesota families and businesses should not have to settle for less.

WLSSD's 2022 bonding request of \$6.95 million will provide half the need funds to rehabilitate two of our clarifiers. These 2 million gallon tanks settle out the solid portion of wastewater to allow the cleaned water to return to the St. Louis River and Lake Superior.



Western Lake Superior Sanitary District
2626 Courtland St., Duluth MN 55806
218-722-3336 • wlsd.com

Clear Answers for Clean Water™



A crane lowers machinery into a clarifier, the St. Louis River estuary is pictured in the background.



Clear Answers for Clean Water™

INVEST IN WASTEWATER INFRASTRUCTURE FOR A CLEAR RETURN

Every year, Minnesota’s wastewater treatment plants clean trillions of gallons of dirty water from our communities—safeguarding public health and protecting the environment. We depend on this infrastructure for quality of life and for business to thrive and grow, but we don’t think about it much until it fails.



WLSSD SECONDARY CLARIFIERS STRUCTURAL REHABILITATION AND SAFETY

Total Project Cost.....	\$13,900,000
WLSSD Investment.....	\$ 6,950,000
2022 CAPITAL BUDGET REQUEST:	\$ 6,950,000

SECONDARY CLARIFIERS perform a fundamental function in wastewater treatment. They settle out solids and clarify the water.

They aren’t fancy, they are not sexy and not exciting. Yet, they still need our investment. Along with the rest of the wastewater treatment process, they are critical to our region’s clean water, public health and economy.

Public health is dependent on clean water. Our critical water infrastructure ensures the safe supply of water to our homes, businesses and hospitals.

At its core, wastewater treatment protects public health and prevents disease transmission. When solids are effectively settled out of the water, we continue to meet and exceed current and future regulations that protect public health and our waters.

From the Executive Director

“When local communities must alone bear the tremendous costs of repairing and replacing clean water infrastructure, rates become unaffordable and the viability of communities and business is threatened. Now’s the time to invest proactively in wastewater infrastructure.”



Marianne Bohren, Executive Director
WLSSD

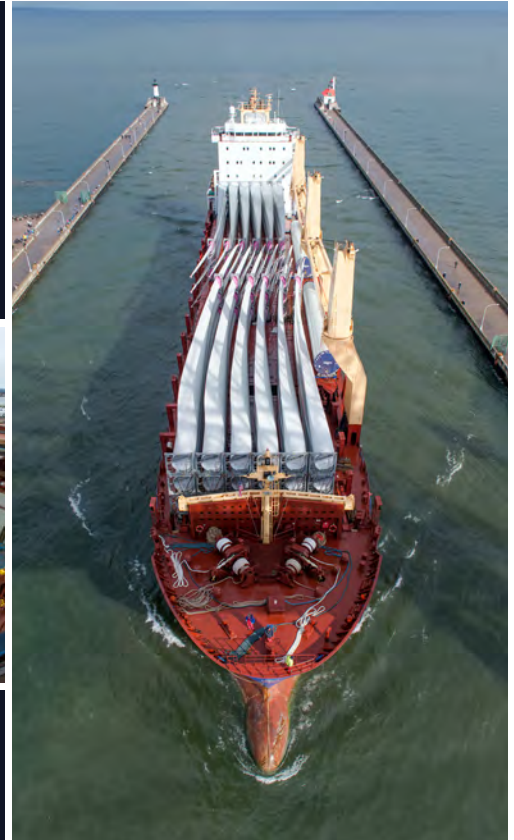


Each of WLSSD’s giant clarifiers measure 160 feet across, and can hold 2.1 million gallons of wastewater.

Port of Duluth-Superior

Mid-America's World Port

SEA | ROAD | RAIL
MULTIMODAL FREIGHT HUB



Duluth Seaway Port Authority

218.727.8525 | www.duluthport.com

**Committed
to our neighbors
and communities**

Learn more at bremer.com

**BREMER
BANK**

Member FDIC

**BENT
PADDLE
BREWING CO.**

**CRAFTING GREAT BEER + COMMUNITY IN
DULUTH'S LINCOLN PARK CRAFT DISTRICT SINCE 2013**

Engineering
Architecture
Surveying
Funding
Planning
Environmental

MSA

Duluth | St. Paul www.msa-ps.com



DULUTH PORT: MID-AMERICA'S GATEWAY TO THE WORLD

Rebounding to pre-pandemic tonnage levels, the Port of Duluth enjoyed a bounce-back season in 2021. Nearly 32 million tons of cargo transited the port, much of it the raw materials of everyday life: iron ore, limestone, concrete, coal and grain.

The outlook for 2022 is even brighter at North America's furthest-inland seaport, with continued strong demand for ore, plus the exciting possibility of containerized maritime cargoes. This new development, the result of infrastructure investments and regulatory partnerships at the Clure Public Marine Terminal, is poised to unlock new opportunities for regional manufacturers and retailers.

Until now, only Cleveland among U.S. Great Lakes ports could accept waterborne container deliveries. Beginning in 2022, Duluth will operate as the second such container-capable port and the westernmost, providing an economical, uncongested and environmentally efficient maritime route for importers and exporters to move an almost limitless array of goods.




Another exciting development is the Duluth Seaway Port Authority's planned renovation of the 7.5-acre Duluth Lake Port dock and slip. Use of this property dates back to the 1880s, but after more than 130 years, the site's elevators and dock walls are crumbling. The Port Authority's goal is to revitalize the dock in a way that contributes to our regional economy and further expands Duluth Cargo Connect services to customers within our region and worldwide. Rehabilitation of the dock walls is a priority to secure the site and open possibilities for future freight-related use. The Port Authority will ultimately seek a combination of state and federal funds to accomplish full redevelopment of this property, a project that promises supply chain advantages for existing regional industries and future industrial expansion.

The Duluth Lake Port endeavor is the next step in a series of improvements at the Clure Terminal, an effort greatly enhanced by support from the legislature and MnDOT's Port Development Assistance Program. As a public port authority, we are grateful for this vital support, which makes possible the infrastructure capital investment necessary to achieve Duluth's potential.

Since 2015, we have invested more than \$36 million in expansion and improvement of our port assets, leveraged by \$6.5 million in PDAP funding. These investments help reduce freight costs for customers and incentivize businesses to locate or expand within our region. They also elevate the port's stature worldwide, making it a more attractive choice in the ultracompetitive world of global shipping.



A DESTINATION ON THE
NORTH SHORE



17-7TH STREET
TWO HARBORS, MN 55616
(218) 834-5800
castledangerbrewery.com

dangerously good ales.

PROUDLY BREWED IN
TWO HARBORS, MN



*Fuel
Your Future*



148FW
MN AIR NATIONAL GUARD

Contact us: 218-788-7818

The vision is set. It's time for takeoff.

DLH has a vision to enrich our regional economy. With a new master plan focused on expanding air service, investing in infrastructure, and supporting local economic development - DLH is laying the foundation for a bright future.



DULUTH INTERNATIONAL AIRPORT



AEOA

Arrowhead Transit
Employment and Training
Head Start
Housing Services
Senior and Nutrition Services



Strengthening communities by providing opportunities for people experiencing social and economic challenges.

1-800-662-5711 | www.aeo.org

Lake County

Providing quality jobs and a lifestyle surrounded by mother nature's beauty.



LAKE COUNTY
Chamber Of Commerce

LakeCounty-Chamber.com

Beaver Bay • Finland • Knife River • Silver Bay • Two Harbors



DULUTH INTERNATIONAL AIRPORT

Travel Globally. Fly Locally.

The Duluth Airport Authority (DAA) has demonstrated resiliency during an unprecedented global pandemic. COVID-19 has affected the travel industry in unparalleled ways. Despite it all, the DAA is positioned well to support the region's economy. Our vision for the future is set and we are ready for takeoff.

Air service is growing stronger with the return of passengers since the economic shutdown of 2020. The DAA was awarded a \$750,000 small community air service development grant from the U.S. Department of Transportation. The funding is a part of a \$1,129,000 package meant to launch direct service to Denver, CO. Thank you to the many organizations who pledged financial support toward this effort totaling 34% of the total monetary package used to mitigate start-up risk for a prospective airline and market the new route.



The DAA recently celebrated the launch of Sun Country's seasonal service to Fort Meyers, FL and Phoenix, AZ. Sun Country's focus on low-cost leisure travel expands our offerings beyond network carriers in, what has been, a traditional business-travel market.

To close 2021, the DAA and its stakeholders completed a master plan for the Duluth International Airport (DLH). The master plan provides a roadmap for capital improvements, infrastructure expansion, and financial sustainability. DLH's master plan positions the DAA to invest an estimated \$156,351,704 in our airfield infrastructure. We are poised to support economic development by opening over 165 acres for development and positioning underperforming, blighted parcels for revitalization. A responsible financial strategy was incorporated into the master plan that will guide the DAA's investments and strengthen our commitment to our core mission.

Our focus is on the strong and growing future of air commerce. A comprehensive master plan is the first step in our vision becoming reality. DLH will continue to be the center of gravity for aviation activity for decades to come.



Tom Werner
Executive Director
Duluth Airport Authority

Honoring the past...



...Reimagining the future.



www.dulutharmory.org



Food Hall



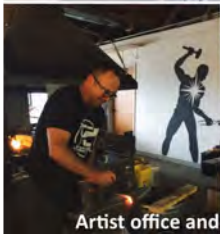
North Country Creative Center Museum



Restored Historic Stage



Music Resource Center



Artist office and studio spaces



Community Kitchen Space



Craft and art space at the Armory



Pleased to serve the community we share. Together, we can accomplish more.

Spectrum is proud to support Duluth & St. Louis County at the Capitol Days.



Thank you for your 2018 support!
Come visit us in 2022 to see the Formal Garden restoration completed

THE CHAMBER
Cook County Minnesota

Discover
NORTH SHORE BEAUTY

VISIT COOK COUNTY MINNESOTA
Naturally Unforgettable

- LUTSEN - TOFFE SCHROEDER
- GRAND MARAIS
- GUNFLINT TRAIL
- GRAND PORTAGE



Honoring the Past... ...Reimagining the Future



"The restoration of the historic Duluth Armory represents a major step forward for historic preservation and economic development in northeastern Minnesota.

We are thrilled to announce a unique partnership between the Armory Arts and Music Center and Sherman Associates which will result in the revitalization of the Duluth Armory.

With the support of many community leaders, artists, businesses, musicians and organizations, as well as the Minnesota Legislature, we will succeed in efforts to bring the Armory back to life."

Mark Poirier
Executive Director
Armory Arts and Music
Center

ARMORY ARTS AND MUSIC CENTER

1325 London Road
Duluth, MN 55805

Phone: 218.428.9686
Email: mark@dulutharmory.org
Web: www.dulutharmory.org

A place for history to come alive for future generations.

The restoration of the Duluth Armory will honor the past and reimagine the future while providing important community space for economic and entrepreneurial development, arts and culture, and a place for history to come alive for future generations.



Celebrating History

The foundational history of the armory as a military training center and as a cultural and entertainment hub for northeastern Minnesota will be showcased throughout the renovated facility. The story of the Minnesota National Guard, Naval Militia, and Naval Reserve will be honored in the Hall of Heroes. The restoration will also celebrate the role the Armory played as a community gathering place and cultural and entertainment hub of the Duluth region.

Economic and Entrepreneurial Development

The Drill Hall will become the centerpiece of a vibrant mixed-use commercial space; with a public food hall filled with small businesses and food vendors. The lower level will contain a large-scale community kitchen space that can be used by a variety of food entrepreneurs. The portion of the Armory facing Lake Superior will become artist galleries and studio spaces.

Arts and Culture

Restoration of historic Duluth Armory stage will be an entertainment focal point and will foster local and regional talent and keep the space active and fresh. The North Country Creative Center will be an exhibit space that celebrates the creative spark of the people and entertainers who performed at the Duluth Armory, including a permanent exhibit space showcasing Bob Dylan's ties to the Armory. The Music Resource Center, an after-school music education program for teens will also be located in the restored Armory.

The Armory Arts and Music Center (AAMC) is partnering with Sherman Associates to complete a \$25 million restoration of the Duluth Armory. AAMC is asking the State of Minnesota for \$7.5 million to fund design and construction for rehabilitation of the Duluth Armory and elements of the North Country Creative Center and Music Resource Center. These funds will match historic and new market tax credits, federal funds, state grants and private funds.

Thank you Minnesotans.

Your collaboration and commitment were unprecedented.

Thank you to communities, tribal nations, landowners, businesses, union workers, contractors, civic leaders and supporters for your efforts to ensure the Line 3 Replacement Project was properly approved and safely constructed.

After more than eight years working together through extensive community engagement and comprehensive environmental, regulatory and legal review, the replaced Line 3 is now safely delivering the reliable and low-cost energy people in the Midwest depend on every day.

To learn more about the Line 3 Replacement Project, visit enbridge.com/line3us.



**PROUDLY BUILDING IN
DULUTH &
SURROUNDING COMMUNITIES
SINCE 1977**

[f](#) [t](#) [i](#) [n](#) [s](#) | www.a-p.com

DULUTH ENERGY SYSTEMS

Improving efficiency, reliability, and resilience for Duluth's energy future

REDISCOVER THE RANGE

ONE ADVENTURE AT A TIME

HISTORY • COMMUNITY • RECREATION • OPPORTUNITY



COMMITTED TO SAFE OPERATIONS AND MEETING THE NEEDS OF OUR CUSTOMERS



Enbridge has been proudly operating in Minnesota since 1949. Enbridge is committed to safe operations and meeting the needs of our customers here in Minnesota and across North America. Minnesota refineries rely on the Enbridge pipeline system to deliver North American crude oil. Crude oil is refined into petroleum products that are used to create the items that help us make the most of our businesses, our recreation and our everyday lives.

Photos from Minnesota pipeline construction in July and during/after Enbridge's Line 3 replacement in July and October in 2021.



"Pipelines are the safest and most efficient way to move crude oil to market and provide significant economic benefits through property taxes that support schools, emergency responders and other local government needs."

Lorraine Little
Director Strategic Partnerships
Enbridge Energy Company



OUR ENERGY VISION IS YOUR CARBON-FREE FUTURE.



We're delivering **50% renewable energy today** and advancing our bold vision to deliver **100% carbon-free energy by 2050.**

Together we're moving EnergyForward.



EnergyForward



mnpower.com/CarbonFreeEnergyVision





**CIRRUS AIRCRAFT DULUTH
INNOVATION LIVES HERE**



POLYMET'S MINE WILL BE A RESPONSIBLE U.S. PRODUCER OF METALS CRUCIAL TO A CLEAN ENERGY FUTURE.

► polymetmining.com



NYSE American: PLM TSX: POM



MOVING BUSINESS FORWARD SINCE 1870



DULUTH
AREA CHAMBER OF COMMERCE

Investing in the Future

McGough is proud to be involved with making Duluth and St. Louis County thrive by creating jobs and building a healthy 2022 and beyond.

34 East Superior Street • Duluth, MN 55802
218.216.1501
www.mcgough.com

25th Annual
**Duluth
& St. Louis
County** AT THE
CAPITOL



THANK YOU

Valued Elected Officials,

Thank you for welcoming Duluth and St. Louis County participants to the Capitol, and for listening to our perspectives and requests.

Appreciated St. Louis County Key Stakeholders,

Thank you for giving your time and attention to amplify our collective voice at the Capitol.

The Duluth Area Chamber is pleased and proud to assist in coordinating this ambitious and energizing event, Duluth & St. Louis County at the Capitol. We are excited to share our plans, and our requests, with you.

In support,



Matt Baumgartner
President
Duluth Area Chamber of Commerce

A handwritten signature in black ink, appearing to read "Matt Baumgartner".



Clear Answers for Clean Water™





25th Annual
**Duluth
& St. Louis
County** AT THE
CAPITOL



Moving business forward. ▶

